



**ANYTIME. ANYWHERE. WE'LL BE THERE.**

**SOLANO  
PUBLIC  
HEALTH**



# **Solano County EMS**

# **ANNUAL REPORT**

## **FY 2012-13**

### **EMS Staff:**

**EMS Administrator:  
Ted Selby**

**Trauma Program Administrator:  
Mike Modrich, RN**

**Public Health Nurse:  
Estee M. Botine, RN, PHN**

**Project Manager:  
Scott Haskins**

**Administrative Secretary:  
Rachelle Canones**

County of Solano  
Emergency Medical Services Agency  
Health and Social Services Department  
Public Health Division

# SOLANO COUNTY EMERGENCY MEDICAL SERVICES ANNUAL REPORT July 1, 2012 – June 30, 2013



## TABLE OF CONTENTS

### **I. INTRODUCTIONS**

- A. Executive Summary
- B. Solano Emergency Medical Services Cooperative (SEMSC)
- C. Emergency Medical Services (EMS) Agency

### **II. MAJOR ACCOMPLISHMENTS**

- A. EMS Week
- B. ST Elevation Myocardial Infarction (STEMI) Program
- C. Trauma Center Program
- D. EMS Projects

### **III. FINANCIAL PICTURE (FY 12/13)**

### **IV. EMS SYSTEM PARTICIPANTS**

- A. Advisory Committees
- B. Emergency Ambulance Providers (Ground)
- C. Emergency Ambulance Providers (Air)
- D. First Responders (ALS & BLS)

### **V. SOLANO COUNTY SYSTEM PERFORMANCE**

- A. Overview
- B. Medic Ambulance
- C. Rio Vista
- D. Suisun City
- E. Vacaville
- F. Public Private Partnership Cities
  - 1. Vallejo
  - 2. Fairfield
  - 3. Dixon
  - 4. Benicia

# SOLANO COUNTY EMERGENCY MEDICAL SERVICES ANNUAL REPORT July 1, 2012 – June 30, 2013



## I. INTRODUCTION

### A. EXECUTIVE SUMMARY

This Annual Report covers the reporting period of July 1, 2012 through June 30, 2013.

During this reporting period, many changes to the Solano EMS System have been proposed, evaluated, and in some cases adopted and supported by the Board; most noticeably in the area of Trauma. In the 2012/2013 Fiscal Year the American College of Surgeons (ACS), an internationally recognized expert association on Trauma, was engaged to assess the Solano county data to determine whether a Level II Trauma Center is needed in the county. Their findings determined that this level of service would benefit Solano County. The ACS was then engaged to develop the criteria, process, and Request for Proposal (RFP) package to be used by the SEMSC Board to potentially designate a Level II Trauma Center in Solano County.

The California Code of Regulations only allows for local EMS Agencies to designate one Level I or Level II Trauma Center for catchment areas serving populations of at least 350,000 people. Thus, Solano County can only support designating one center. The ACS presented their recommendation as to the criteria necessary for a facility to be designated as a Level II Trauma Center at the April 2013 SEMSC Board Meeting. Both Kaiser Foundation Hospital in Vacaville and NorthBay Medical Center in Fairfield actively participated in preparing for and pursuing this designation during this reporting period.

This reporting period's EMS Week Celebration took place on May 19, 2013 at Creekside Park in the northern part of the county with a barbecue, picnic, and awards presentation honoring medical services professionals who so often go unrecognized for the service they provide. Mike Modrich was the Frank Springer Award recipient and each department and agency serving Solano County residents had the opportunity to recognize their employees of the year. Once again, Medic Ambulance worked alongside Solano EMS to manage the planning and execution of the EMS Week events. On May 21st KUIIC's John Young helped promote the EMS Week Public Outreach Day by discussing "on air" the benefits of learning CPR and announcing the free training held on May 23rd. The event was well attended again this year and it is anticipated that this public service will be continued on into the coming years.

# SOLANO COUNTY EMERGENCY MEDICAL SERVICES ANNUAL REPORT July 1, 2012 – June 30, 2013



## B. SOLANO EMERGENCY MEDICAL SERVICES COOPERATIVE (SEMSC)

The mission of the Solano Emergency Medical Services Cooperative (SEMSC) is to deliver effective prehospital care at a reasonable cost to the people of Solano County by coordinating and maximizing resources. The core values of this system include:

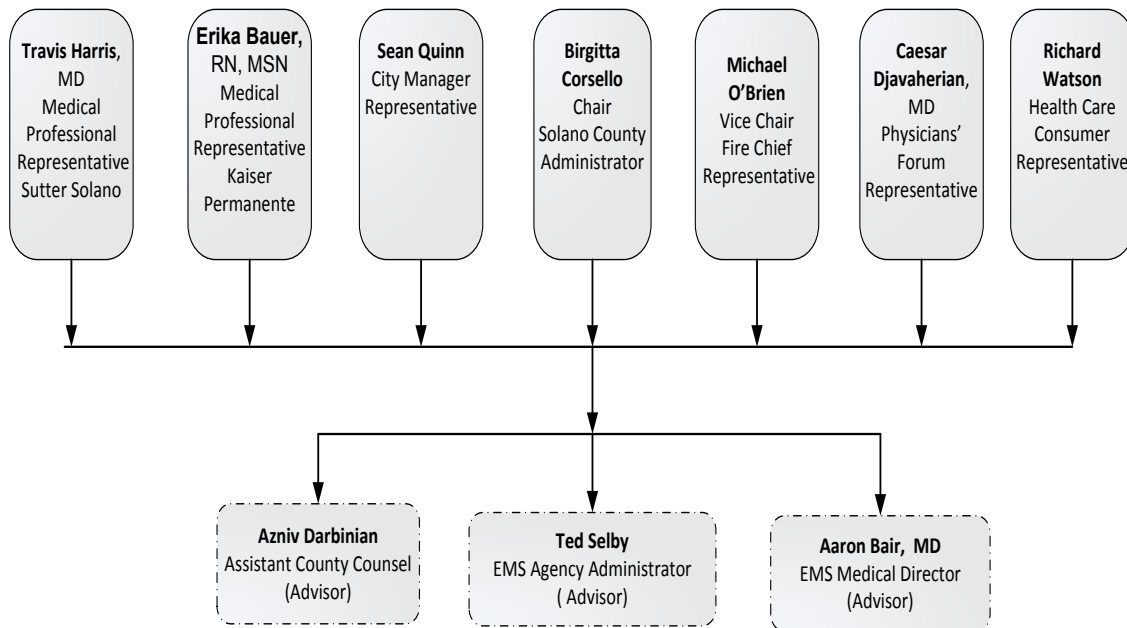
**RAPID RESPONSE** – intended to minimize the time from the actual emergency event to the arrival of appropriate emergency resources.

**ACCOUNTABILITY** – in order to ensure that the EMS system is performing according to required standards, all aspects of prehospital care delivery is measured, validated, and reported to the SEMSC Board and is available to the public.

**COMPETENCY** – providers of prehospital care must be held accountable to provide the highest standards of medical care.

The SEMSC Board of Directors is made up of seven (7) members as specified in the bylaws. Membership as of the end of this reporting period is shown below.

Solano County Emergency Medical Services Cooperative (SEMSC)  
Board of Directors  
6/30/2013



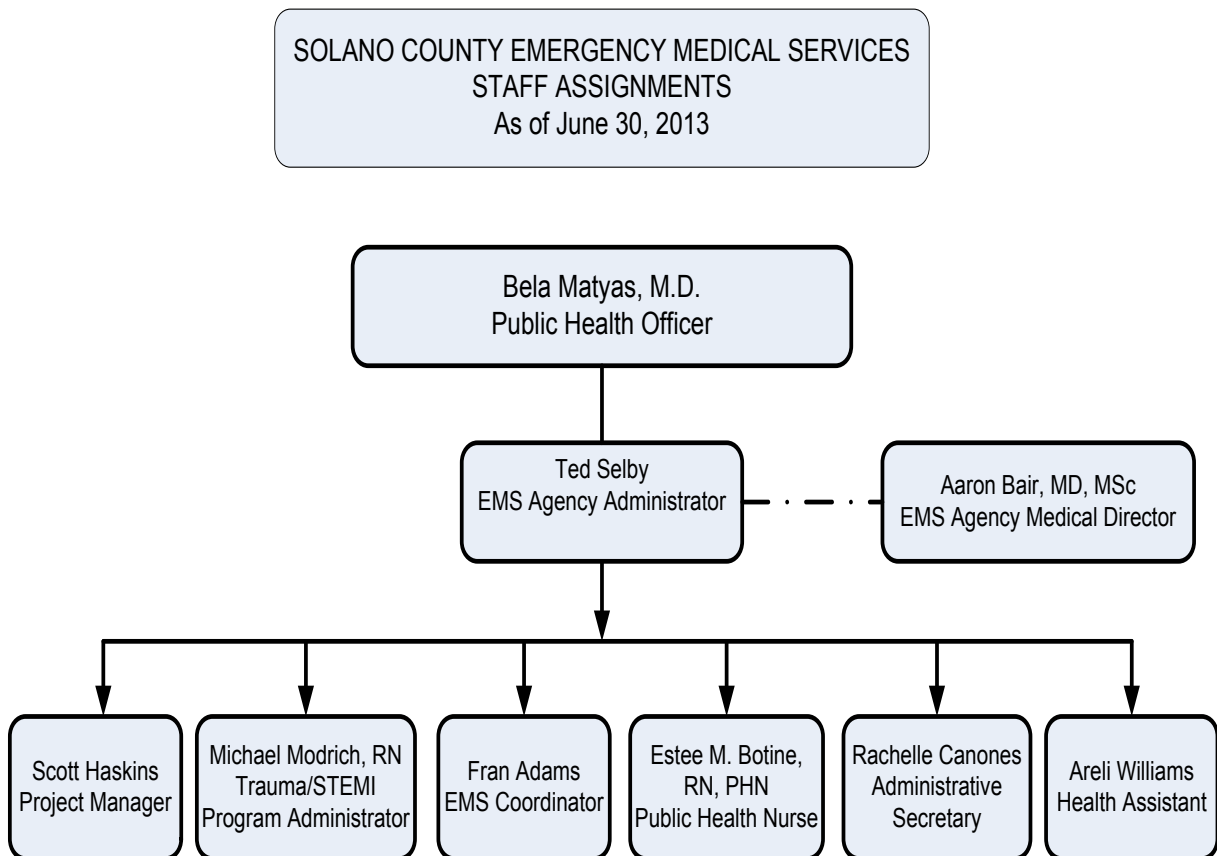
# SOLANO COUNTY EMERGENCY MEDICAL SERVICES ANNUAL REPORT July 1, 2012 – June 30, 2013



## C. EMERGENCY MEDICAL SERVICES (EMS) AGENCY

Emergency Medical Services (EMS) is unique in that it requires the coordination of entities which are otherwise completely independent from each other. It is the role and responsibility of the Solano EMS Agency, as the LEMSA for Solano County, to achieve this coordination through planning, policies and procedures, promulgation of standards, and the monitoring of operational and medical performance. Ultimately, an effective EMS system requires the cooperation of Public Safety Dispatch, fire service, ambulance providers (ground and air), hospital personnel, physicians, nurses, and administrators.

The Solano County EMS Agency Staff employs a small group of professionals who plan the coordination of the elements required to seamlessly respond to individual and community emergencies. This is accomplished by working with acute care hospitals, fire departments, ambulance providers, law enforcement, State Agencies, and others in public health to plan, manage, and evaluate the essential components of emergency response.



# SOLANO COUNTY EMERGENCY MEDICAL SERVICES ANNUAL REPORT July 1, 2012 – June 30, 2013



## II. MAJOR ACCOMPLISHMENTS

### A. EMS WEEK.

EMS Week is a national event that honors emergency personnel nationwide. Solano County has a strong cadre of emergency personnel who provide emergency first response, transport, and care to residents and visitors. The Solano County Board of Supervisors recognized EMS week with a Resolution that declared May 19-25, 2013 as Solano County Emergency Medical Services Week.

This year, instead of the more formal Appreciation and Awards Banquet, EMS piloted a Barbecue/Picnic that was more family-oriented. It was held on May 19, 2013 and was very well received. The Barbecue/Picnic may very well replace the formal Awards Banquet in the coming years.

The Frank Springer Award, which recognizes an individual for their outstanding commitment and contributions to improving emergency medical services for the citizens of Solano County, was presented this year to EMS' Michael Modrich, R.N. He was honored for his vast experience in EMS, his teaching background, and his desire to improve the EMS system in Solano County. The Frank Springer Award is in honor of the Assistant Vallejo Fire Chief who served Solano County from 1975 to 1998.

Cordelia Fire Department, as in the past, provided crucial meeting space for the EMS Week planning meetings that were required to ensure this event ran smoothly, while Medic Ambulance co-managed oversight of this event, and their personnel played a key role in developing the EMS Week program.

Two other EMS Week events took place on May 23 and 24, which included a health and safety fair and free Public CPR (traditional and "hands only") and First Aid classes coordinated by Medic Ambulance and Life Support Network. NorthBay Healthcare donated the meeting space for these events where NorthBay, Kaiser, and Sutter all provided important information and education on topics such as fall prevention, stroke prevention, and being heart smart. Other vendors were present to show their support and give back to the community in honor of EMS Week.

# SOLANO COUNTY EMERGENCY MEDICAL SERVICES ANNUAL REPORT July 1, 2012 – June 30, 2013



## **B. STEMI SYSTEM**

NorthBay Medical Center and Kaiser Foundation Hospital, Vallejo continue to be designated as a STEMI Receiving Centers (SRC) in Solano County. Solano County currently has agreements with four out-of-county hospitals that receive STEMI patients from Solano County, but with the designation of NorthBay and Kaiser Vallejo as STEMI Receiving Centers, Solano County residents are able to receive cardiac care much sooner and closer to home. This is a vital component of the system considering the 90-minute window of time for treatment that is generally viewed as critical in providing better patient outcomes following cardiac emergencies.

## **C. TRAUMA SYSTEM**

NorthBay Medical Center in Fairfield and Kaiser Foundation Hospital, Vacaville have been designated as Level III Trauma Centers in Solano County, and both have been verified by the American College of Surgeons (ACS). This enhancement to emergency service means that many patients who suffer a traumatic event will be able to remain closer to their families in Solano County for their care.

In the previous fiscal year, Phase I of the designation process was put in place. ACS was contracted by the SEMSC board to develop recommendations with evidence-based rationale and justification as to whether a Level II Trauma Center in Solano County should be developed. Their findings supported that Solano County has the population base to sustain one Level II Trauma Center. The ACS was then retained to develop the request for proposal (RFP) and designation process.

This fiscal year saw the development of the RFP which was presented to the SEMSC Board in April, 2013. This was the beginning of Phase II of the Level II Trauma Center designation process. The following next steps were completed this fiscal year: distribution of the RFP, submission of questions in writing, a mandatory proposers conference, and submission of letters of intent with proposal fees. Both NorthBay and Kaiser submitted letters of intent indicating they would be pursuing Level II Trauma Center designation. The submission of the actual proposals, selection of an independent review panel (IRP) to review the proposals and conduct site visits, and the presentation of their recommendation to the SEMSC Board, and the preliminary designation of a Level II Trauma Center will all be included in the fiscal year 2013-2014 Annual Report.

Trauma patients in the southernmost areas of the County continue to be transported to John Muir Medical Center; as it is the closest Level II Trauma Center for these patients, and is designated as such.

# SOLANO COUNTY EMERGENCY MEDICAL SERVICES ANNUAL REPORT July 1, 2012 – June 30, 2013



## D. EMERGENCY MEDICAL SERVICES PROGRAMS:

### 1. **FIELD ADVISORY REPORTS (FARs):**

Solano County EMS Policy 2305 provides guidance to field personnel and EMS Staff regarding the identification and processing of Field Advisory Reports (FARs). FARs can address problems or potential problems as well as positive issues, with the express purpose of improving the delivery of prehospital care in Solano County.

Investigations can be as simple as one phone call, or require several phone calls, emails, and meetings to effectively resolve the issue noted in the specific FAR. During this reporting period, 287 FARs were submitted, with 236 investigated and closed, for an 82% closure rate

### 2. **EMERGENCY MEDICAL TECHNICIAN (EMT) CERTIFICATIONS and PARAMEDIC ACCREDITATIONS:**

Solano County EMS processes all EMT certifications and Paramedic accreditations for Solano County personnel. A total of 310 EMTs were certified; including initial EMTs and recertifying EMTs. For Paramedics, there were a total of 142 personnel processed. This included student interns, initial paramedics, as well as reaccreditations.



# SOLANO COUNTY EMERGENCY MEDICAL SERVICES ANNUAL REPORT July 1, 2012 – June 30, 2013



### III. FINANCIAL UPDATE

Shown below is information for Fiscal Year 2012/13 financial activity:

<b>Salaries &amp; Benefits</b> Includes net wages, employer-paid payroll and benefit expenses, etc.	\$582,661
<b>Services &amp; Supplies</b> Includes \$1,470,616 in Public/Private Partnership (PPP) payments; and all contracts for services, travel and training costs, operational expenses, etc.	\$1,724,859
<b>Transfers outside H&amp;SS Fund</b> Includes countywide overhead charges, custodial, records storage and postage charges from other county departments.	\$23,398
<b>Transfers within H&amp;SS Fund</b> Includes H&SS overhead and administrative costs	\$65,749
<b>TOTAL EXPENSES</b>	<b>\$2,396,667</b>
<b>Licenses, Permits &amp; Franchise</b> Includes franchise fees, personnel certification fees, non-exclusive operating fees, designation fees, etc.	\$846,595
<b>Fines, Forfeitures &amp; Penalty</b> Includes Maddy funds, Public/Private Partnership revenues, etc.	\$1,542,367
<b>Revenue From Use of Money/Prop</b> Includes net interest on deposit	\$2,814
<b>Miscellaneous Revenues</b>	\$15
<b>TOTAL REVENUES</b>	<b>\$2,391,791</b>

# SOLANO COUNTY EMERGENCY MEDICAL SERVICES ANNUAL REPORT July 1, 2012 – June 30, 2013



## IV. EMS SYSTEM PARTICIPANTS

### A. ADVISORY COMMITTEES

#### 1. Physicians' Forum

The EMS Physicians' Forum met quarterly during this reporting period to review and evaluate patient care; and to develop, review, and approve policies and protocols affecting patient care. Membership includes emergency physician/nurse representatives from the area hospitals, pre-hospital representatives from the fire departments, as well as EMS Agency staff.

#### 2. STEMI Committee

The STEMI committee meets quarterly and is charged with monitoring the care of Solano County EMS patients with STEMI and to identify opportunities for improvement in STEMI care in a forum that is disclosure-protected according to Evidence Code Section 1157.7. Membership includes emergency physicians from the Physician's Forum committee, cardiologists, interventionalists, and others involved in STEMI care; medical directors or representatives from the STEMI Receiving Centers; EMS providers, PCC/CQI representatives, and hospital administrators.

#### 3. Pre-hospital Care Committee (PCC) and Continuous Quality Improvement (CQI)

The PCC/CQI Committee meets quarterly and membership includes emergency physicians and nurses and pre-hospital care providers from each of the County's first responder agencies and ambulance providers (ground and air). Responsibilities include reviews, audits, and studies to ensure that the CQI process functions effectively.

#### 4. Field Trauma Advisory Committee

The Field Trauma Advisory Committee (Field-TAC) meets quarterly and is responsible for reviewing select trauma cases occurring in Solano County to determine if care provided was appropriate and that destination decisions were appropriate to the injury incurred.

#### 5. Trauma Advisory Committee (TAC)

The Trauma Advisory Committee met quarterly during this reporting period and includes members from the local Trauma Centers, including Trauma Surgeon Medical Directors and Trauma Program Managers, Physicians' Forum members, Coroner's Office Officials, and EMS personnel. These meetings are hosted by the NorthBay HealthCare Group and Kaiser Foundation Hospital, Vacaville on an alternating basis.

# SOLANO COUNTY EMERGENCY MEDICAL SERVICES ANNUAL REPORT July 1, 2012 – June 30, 2013



## **B. EMERGENCY AMBULANCE PROVIDERS (GROUND)**

1. Medic Ambulance, Inc. holds the Exclusive Ambulance Agreement for all Advanced Life Support (ALS) transport in Solano County, except for the City of Vacaville and Zone "C" where the Vacaville Fire Department is charged with providing 9-1-1 response. Medic also provides ambulance service for portions of Sacramento County including the City of Isleton, River Delta Fire Protection Districts; as well as Gordon Valley Fire Protection District in Napa.
2. Vacaville Fire Department - As specified in the State EMS Authority approved EMS Plan, Vacaville Fire Department provides 9-1-1 response to the City of Vacaville and "Zone C." The Vacaville Fire Department has been providing emergency ALS First Response and transport since the mid 1970's. The City is recognized as a "201 entity" under the State of California Health & Safety Code 2.5, Section 1797.201.

## **C. NON-EMERGENCY AMBULANCE TRANSPORT PROVIDERS**

The Solano Emergency Medical Services Cooperative (SEMSC) Board of Directors implemented Resolution 10-02 requiring any and all operators and providers of ambulance service to persons and facilities in Solano County to be authorized by the Solano County EMS Agency.

Ambulance companies wishing to provide Basic Life Support (BLS) or Critical Care Transport (CCT) in Solano County must submit a detailed application prior to providing service. The transport provider list changes periodically. During this reporting period the following ambulance companies were authorized to provide Basic Life Support (BLS), and/or Critical Care Transport (CCT) services **ONLY**:

- Bay Medic
- Falcon CCT
- NorCal Ambulance
- Piner
- Protransport
- Sacramento Valley Ambulance
- VeriHealth (Falck)
- Westmed Ambulance

# SOLANO COUNTY EMERGENCY MEDICAL SERVICES ANNUAL REPORT July 1, 2012 – June 30, 2013



## **D. EMERGENCY AMBULANCE PROVIDERS (AIR)**

Solano County has the benefit of being served by three air ambulance providers: CALSTAR (California Shock/Trauma Air Rescue) with a base station in Solano County at the Nut Tree Airport as well as Buchanan Field, and Sacramento; REACH Air Medical Services with bases in Concord, Lakeport, and Santa Rosa; and the California Highway Patrol (CHP), which has a helicopter capable of transporting injured persons, stationed at the Napa Airport.

## **E. FIRST RESPONDERS (ALS & BLS)**

The residents of Solano County are served by fire departments in each locale. Fire departments in the cities of Benicia, Dixon, Fairfield, and Vallejo are part of the Public Private Partnership (PPP) and each provides ALS first responder support to area residents. The City of Rio Vista and Cordelia Fire Protection District provide first responder ALS service, but are not part of the Public Private Partnership. Suisun City provides only basic life support (BLS) for its residents.

There are several Fire Protection Districts throughout the County providing emergency medical response service where most firefighter/EMTs are volunteers.

# SOLANO COUNTY EMERGENCY MEDICAL SERVICES ANNUAL REPORT July 1, 2012 – June 30, 2013



## IV. SOLANO COUNTY

### A. OVERVIEW

1. Solano County was formed in 1850 and covers 909.4 square miles. This includes 84.2 square miles of water area and 675.4 square miles of rural land area. Solano County is bordered by Contra Costa, Napa, Sacramento, Sonoma, and Yolo Counties. Solano County is located approximately 45 miles northeast of San Francisco and 45 miles southwest of Sacramento.

Solano County's population ranking is 38 out of 58 counties state-wide, with a population of 418,387 as of January 2013.

Fairfield serves as the County Seat. It is interesting to note that both Benicia and Vallejo had the honor of serving as the State Capital in the early 1850's.



2. The structure of Solano County's EMS System remains a "high performance model." Medic Ambulance Service, Inc. was awarded the exclusive ambulance contract in May 2010 and provides Advanced Life Support (ALS) service for all of Solano County with the exception of the City of Vacaville and Zone C. Medic Ambulance has a response time of 12 minutes in the four Public Private Partnership (PPP) Cities of Benicia, Dixon, Fairfield, and Vallejo and a nine minute response time in Rio Vista and Suisun. Rural calls are allowed a 15 minute response time and remote calls have a 90 minute response time.

# SOLANO COUNTY EMERGENCY MEDICAL SERVICES ANNUAL REPORT July 1, 2012 – June 30, 2013



3. The PPP Agreement between Medic Ambulance and the Cities of Benicia, Dixon, Fairfield, and Vallejo allow the fire departments in these cities to operate under a high performance contract with Medic Ambulance and the Solano Emergency Medical Services Cooperative (SEMSC) substantially similar to the contract SEMSC entered with Medic Ambulance. This agreement allows Medic Ambulance Crews an additional three minutes to arrive on scene as the Fire Departments provide “first response” service (within seven minutes) to their communities.
4. Compliance figures for Medic Ambulance Service remain exceptional, at an average of 99% during this reporting period. The Paramedics and EMTs working for Medic Ambulance have continued to provide exceptional care to the citizens of Solano County as well as visitors to our local area.

Benicia Fire, Dixon Fire, Fairfield Fire, and Vallejo Fire Departments continue to maintain outstanding response times. The PPP participating cities have all maintained average response times of 90% or better during this reporting period.

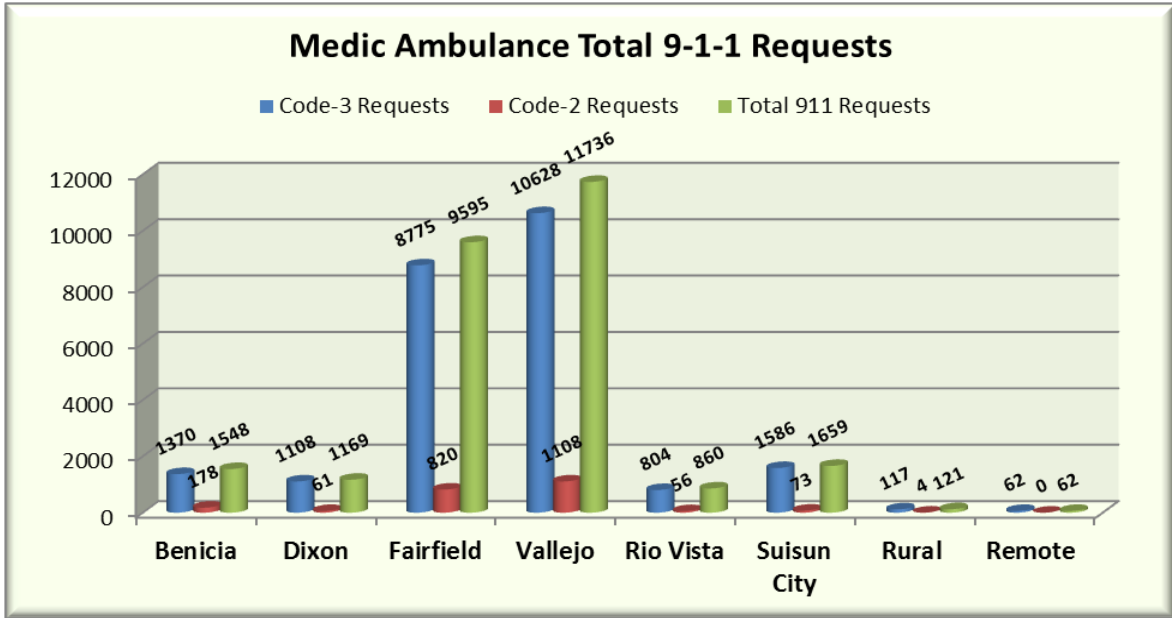
5. Solano County has an unincorporated area of approximately 675 square miles – these are rural and remote areas and are supported by various volunteer fire departments as well as Medic Ambulance, and other responders on an as-required basis. These unincorporated areas do not include the area designated as “Zone C” that is supported by the Vacaville Fire Department.

# SOLANO COUNTY EMERGENCY MEDICAL SERVICES ANNUAL REPORT July 1, 2012 – June 30, 2013

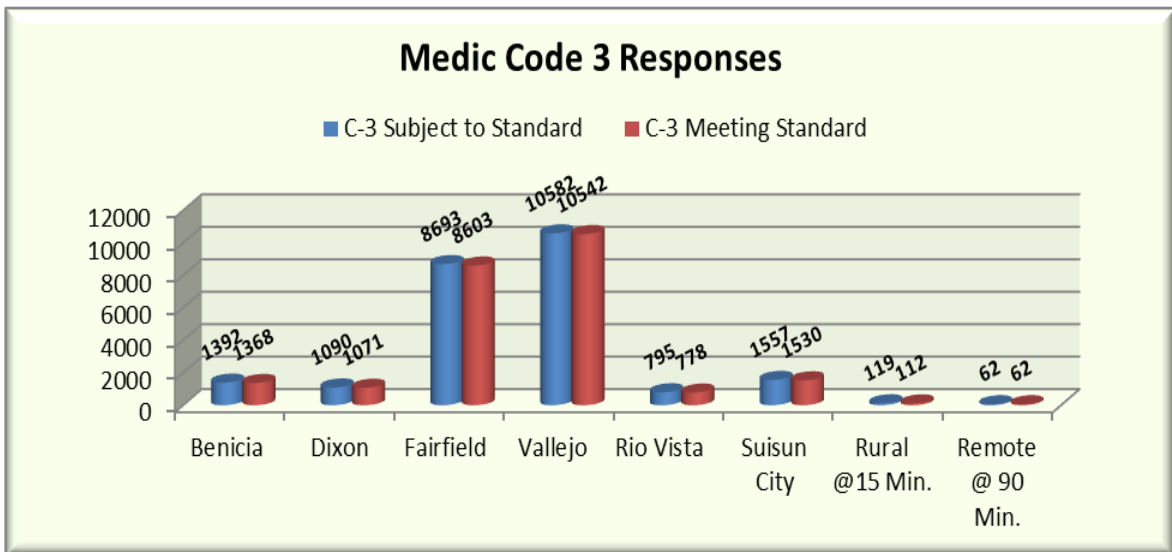


## B. MEDIC AMBULANCE

With over 26,700 9-1-1 calls, the total 9-1-1 responses by Medic Ambulance are shown below for each city in Solano County, including the Rural and Remote area categories.



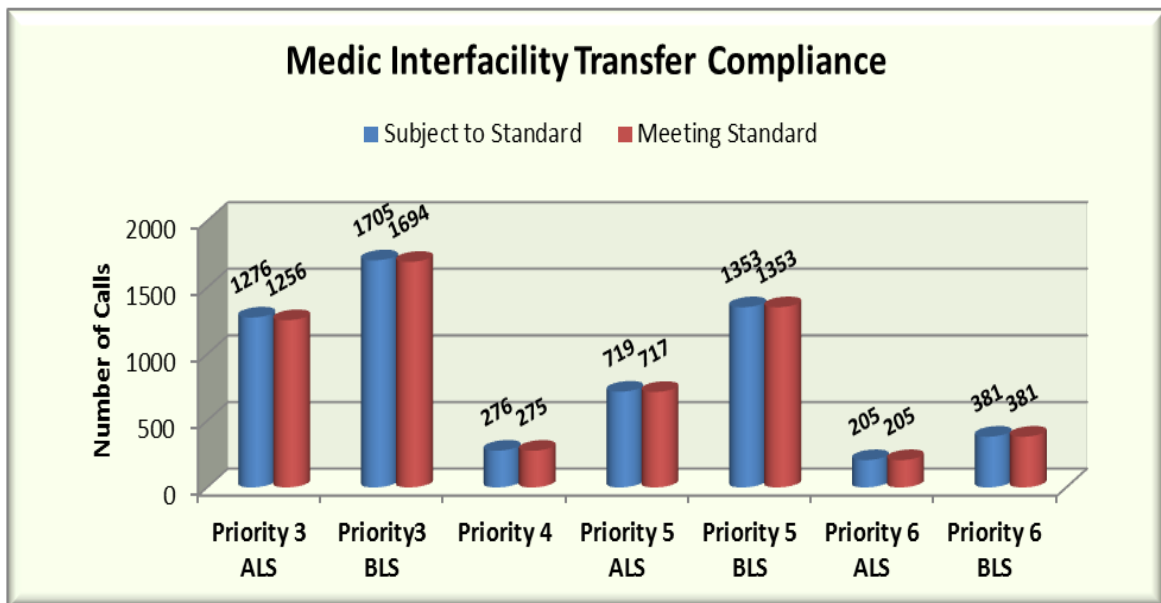
Medic's Code 3 responses are shown by city, the appropriate response time noted below for rural and remote areas. Response time for Benicia, Dixon, Fairfield, and Vallejo is 12 minutes or better, and the response times for Suisun and Rio Vista are nine minutes or better.



# SOLANO COUNTY EMERGENCY MEDICAL SERVICES ANNUAL REPORT July 1, 2012 – June 30, 2013



Medic Ambulance also provides interfacility transfer support for all levels of service. Medic Ambulance responded to over 5,900 transfer requests during this reporting period. The overall response time percentage for all categories is an exceptional 99.4%. Categories three through six have varied response time requirements. Category three transfers are priority transfers and have a 60 minute response time for ALS calls while the BLS calls have a 120 minute response time. Category four ALS calls are urgent and have a 30 minute response time. Category five ALS calls are urgent and have a 30 minute response time. Categories five and six are pre-scheduled and have a one to four hour response time and an “over four hour” response time respectively.







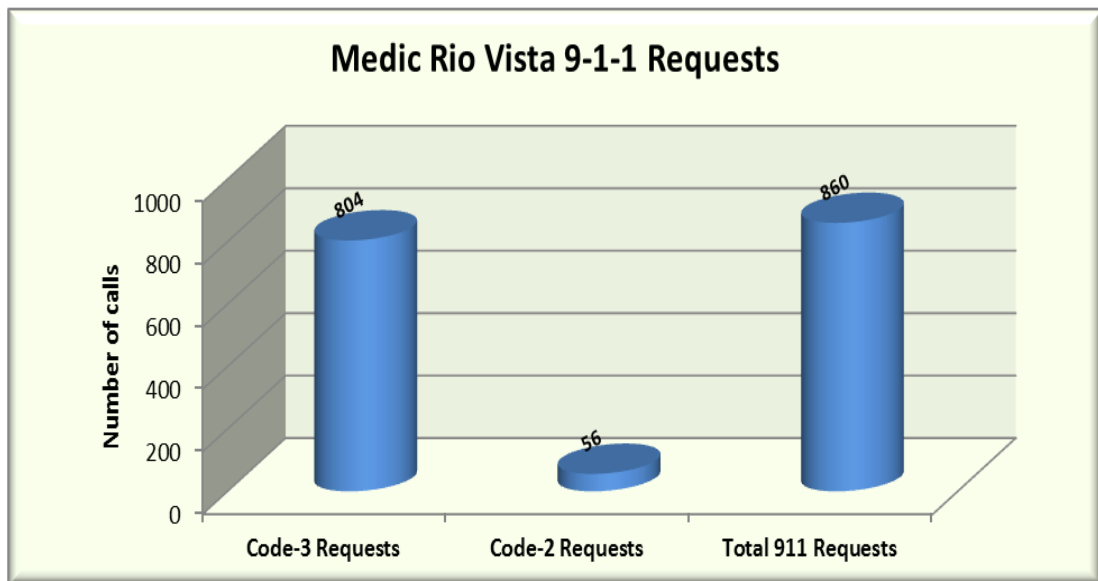
# SOLANO COUNTY EMERGENCY MEDICAL SERVICES ANNUAL REPORT July 1, 2012 – June 30, 2013



## C. RIO VISTA

Located on the Solano County side of the Sacramento River, Rio Vista is the most isolated of the communities in Solano County. The estimated population in Rio Vista as of January 2013 was 7,599. Medic Ambulance provides a dedicated unit to the City of Rio Vista due to its isolated location.

Ambulance response times in Rio Vista are outstanding, with an average compliance rate of 97.7% for this reporting period. This is based on a nine-minute response time since Rio Vista is not part of the Public Private Partnership.





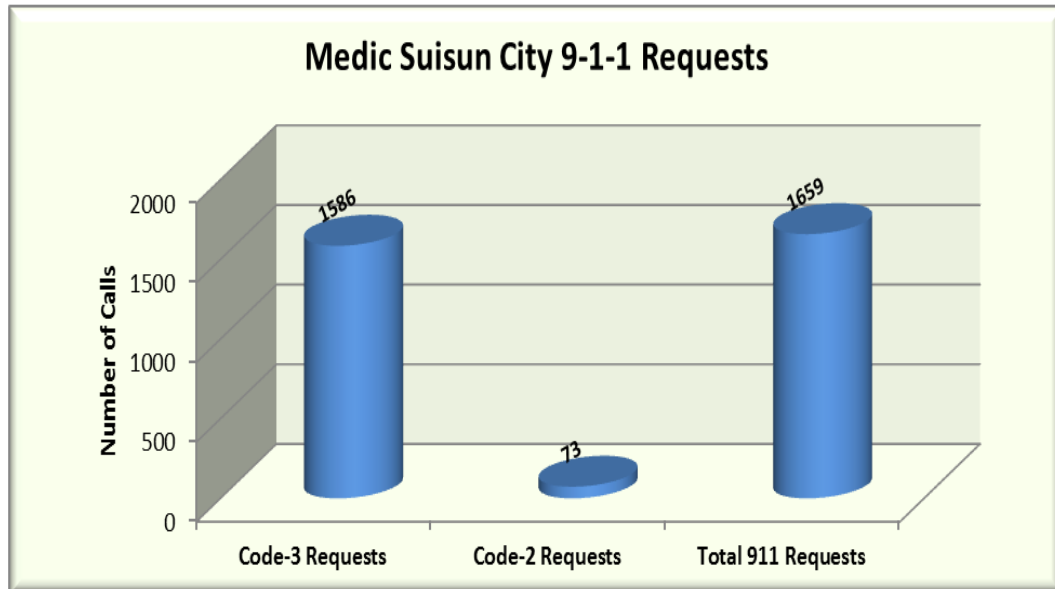
# SOLANO COUNTY EMERGENCY MEDICAL SERVICES ANNUAL REPORT July 1, 2012 – June 30, 2013



## D. SUISUN CITY

Suisun City was incorporated as a city in 1868 and is the fourth most populous city in Solano County. The city population is 28,234 as of January 2013. The city is situated on 4.2 square miles – which makes it the most densely populated city in Solano County. As a comparison, Benicia, with an estimated population of 27,163 is situated on 14 square miles. Growth estimates for Suisun City put it at approximately four percent per year.

Suisun City is one of two cities in Solano County (not including Vacaville) that is not part of the Public Private Partnership. Additionally, Suisun City Fire Department provides only Basic Life Support (BLS) service as they do not have Paramedic (ALS) service. Medic Ambulance provides Advanced Life Support (ALS) coverage with an average response time compliance rate of 98.29%.





# SOLANO COUNTY EMERGENCY MEDICAL SERVICES ANNUAL REPORT July 1, 2012 – June 30, 2013



## E. VACAVILLE

The City of Vacaville was incorporated in 1892. Today the city comprises just under 27 square miles. The current estimated population of Vacaville in January 2013 was 92,677, making Vacaville the third most populous city in Solano County. Located along the I-80 corridor, Vacaville hosts a large number of daily commuters which adds to the challenge of responding in an expeditious manner during rush hour.

Vacaville Fire Department has provided uninterrupted service to the City of Vacaville since 1976. The City is recognized as a “201 entity” under Government Code 1797.201.

Vacaville Fire responded to approximately 5,090 calls during this reporting period, including “Code 3” calls and “Code 2” calls. The average response time for this reporting period is 86.80%. It is important to note that at this time, distinctions between “Code 3” and “Code 2” calls are not made. This filter has been added for the next fiscal period report.

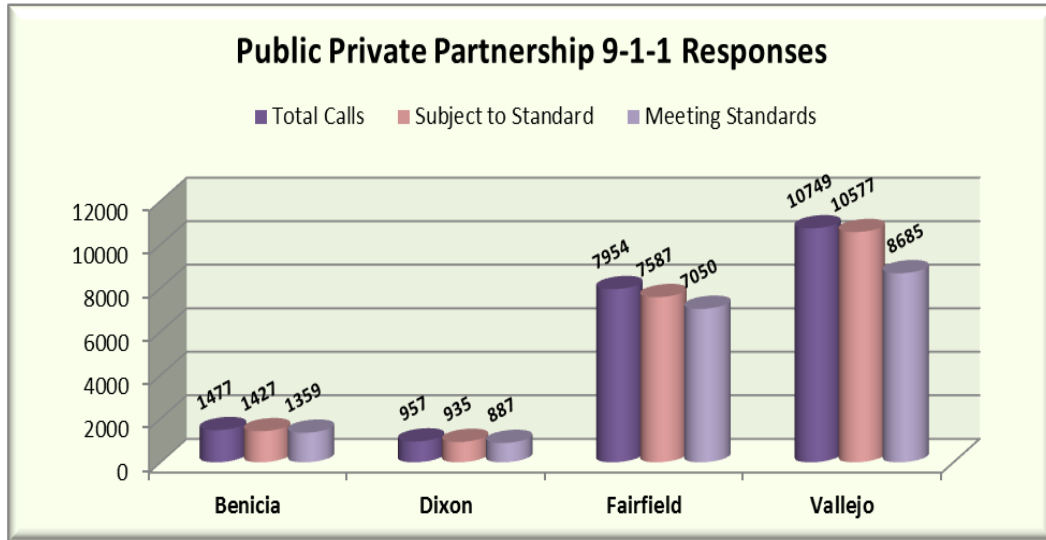
Response times in the City of Vacaville are measured at seven minutes for urban calls within the city limits and 15 minutes for rural calls. It should be noted that **all** calls outside the city limits, regardless of distance, are considered “rural” and measured at the 15 minute standard. This designation is based on historical precedent.

# SOLANO COUNTY EMERGENCY MEDICAL SERVICES ANNUAL REPORT July 1, 2012 – June 30, 2013

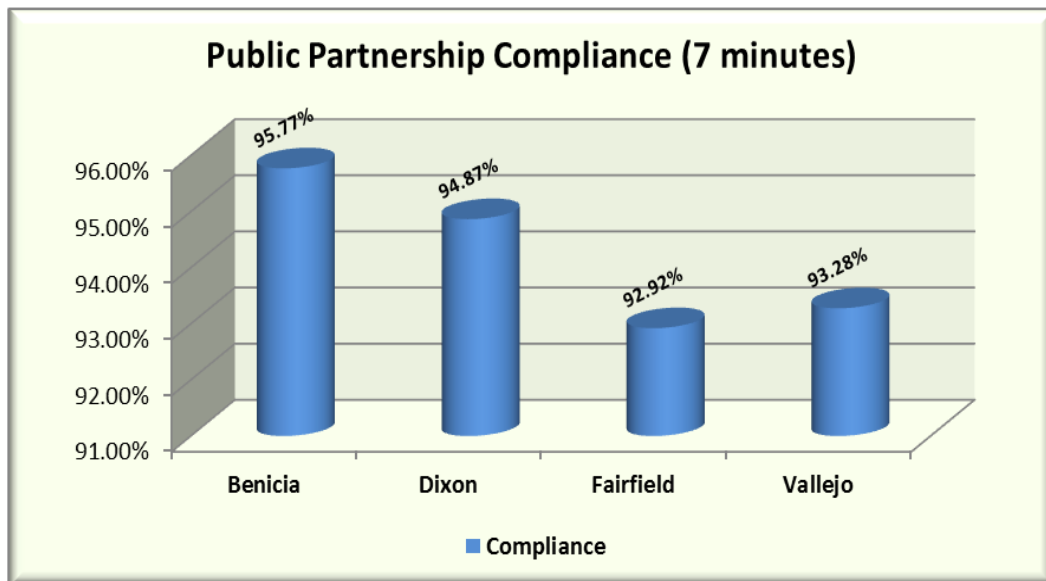


## F. PUBLIC PRIVATE PARTNERSHIP

The Public Private Partnership (PPP) Fire Department figures are presented here, with city specific details to follow. Total Calls include “Code 3” and “Code 2” calls with a total of well over 21,000 calls with an overall response time of 93.3% for all cities involved in the PPP .



The compliance rate for each PPP city for “Code 3” responses is indicated below. The response time requirement for these calls is seven minutes or less. We are pleased to note that all PPP cities have posted compliance rates of 92% or better for this reporting period.





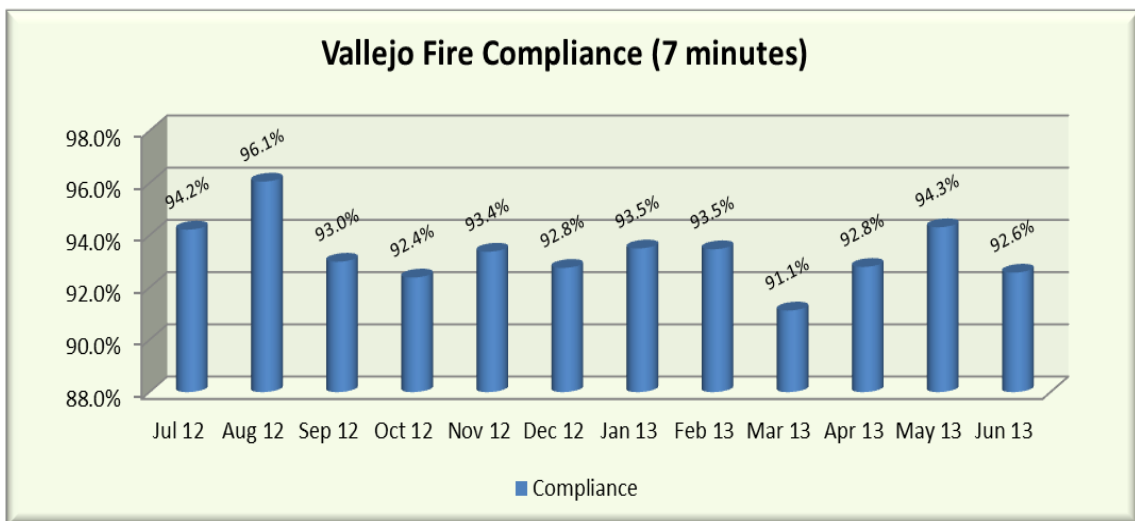
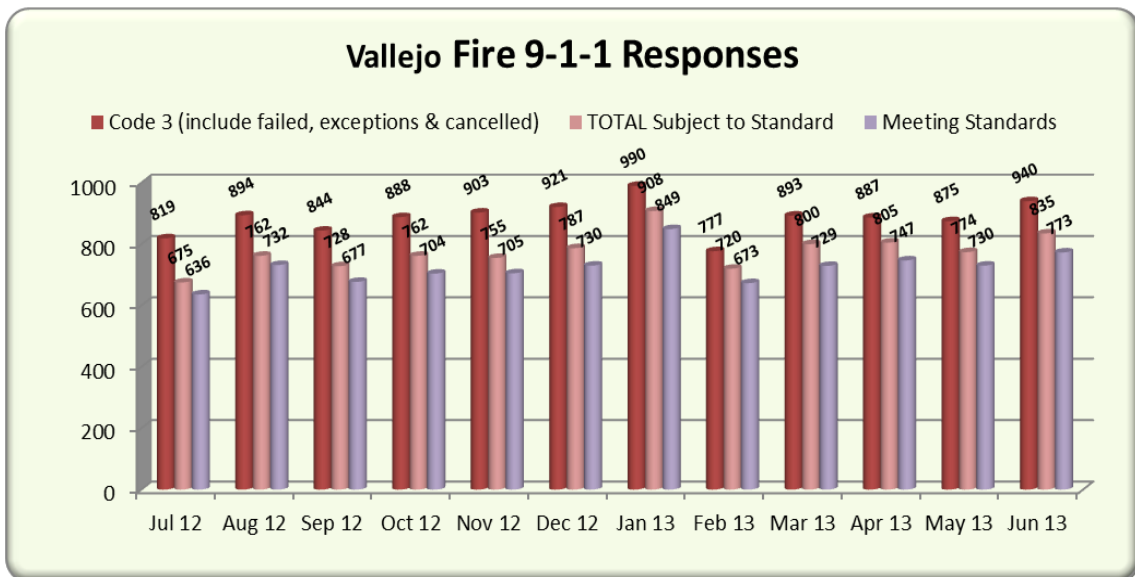
# SOLANO COUNTY EMERGENCY MEDICAL SERVICES ANNUAL REPORT July 1, 2012 – June 30, 2013



## 1. Vallejo

Vallejo, with an estimated population of 117,112 (January 2013), is the most populous city in Solano County. Vallejo and its surrounding community cover over 53.58 square miles, which includes 23.64 square miles of waterways. Vallejo held the honor of being one of California's early state capitals in the 1850's.

Vallejo Fire Department provides ALS first response to the residents of Vallejo. The total 9-1-1 calls for Vallejo Fire in this reporting period were 9,944, with a compliance rate of 93.3% at seven minutes. Medic Ambulance, providing ALS transport service for Vallejo had a 99.6% compliance rate at a 12-minute response time standard.





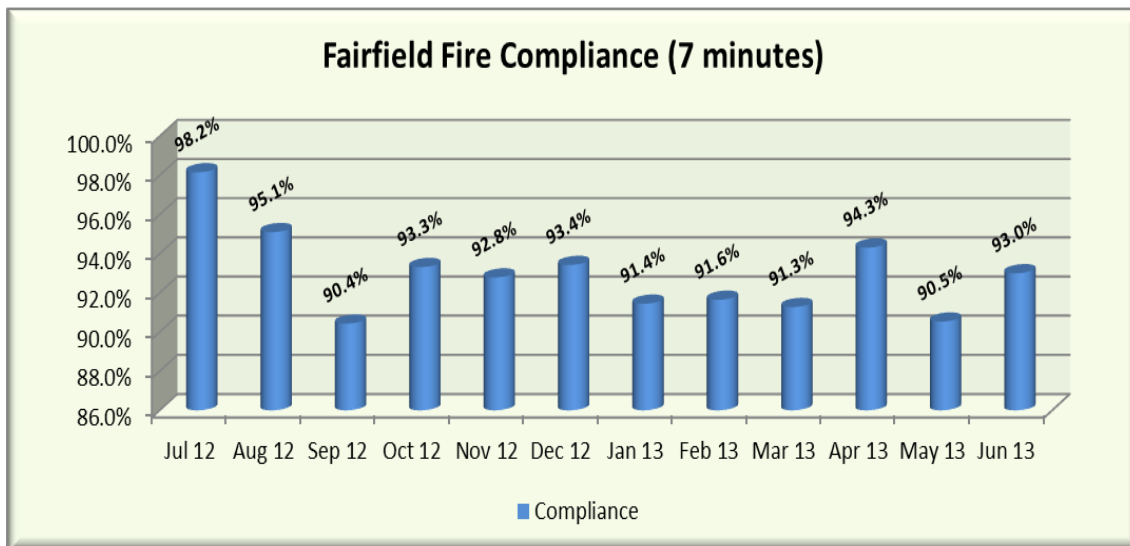
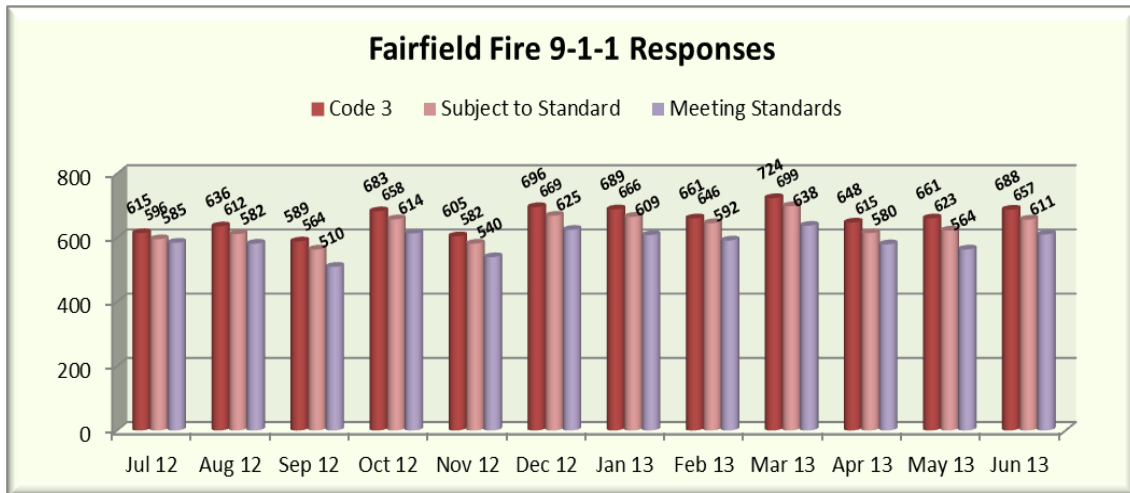
# SOLANO COUNTY EMERGENCY MEDICAL SERVICES ANNUAL REPORT July 1, 2012 – June 30, 2013



## 2. Fairfield

Fairfield is the second most populous city in Solano County with an estimated population, as of January 2013, of 108,207. As the County Seat for Solano County, Fairfield is a thriving community in the heart of Solano County with an estimated annual growth of two percent.

Fairfield Fire Department provides ALS First Response for the city and surrounding areas. They responded to a total of 7,587 “9-1-1” calls during this reporting period, with a 92.9% compliance rate at seven minutes. Medic Ambulance provides ambulance transport, with an average response time compliance rate of 99% at 12 minutes.





# SOLANO COUNTY EMERGENCY MEDICAL SERVICES ANNUAL REPORT July 1, 2012 – June 30, 2013

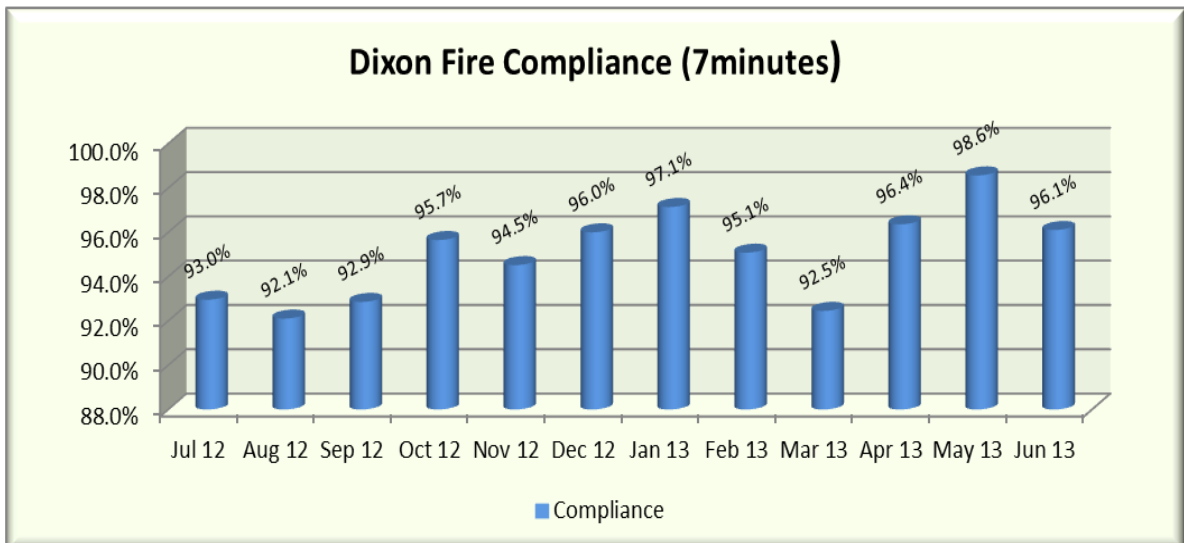
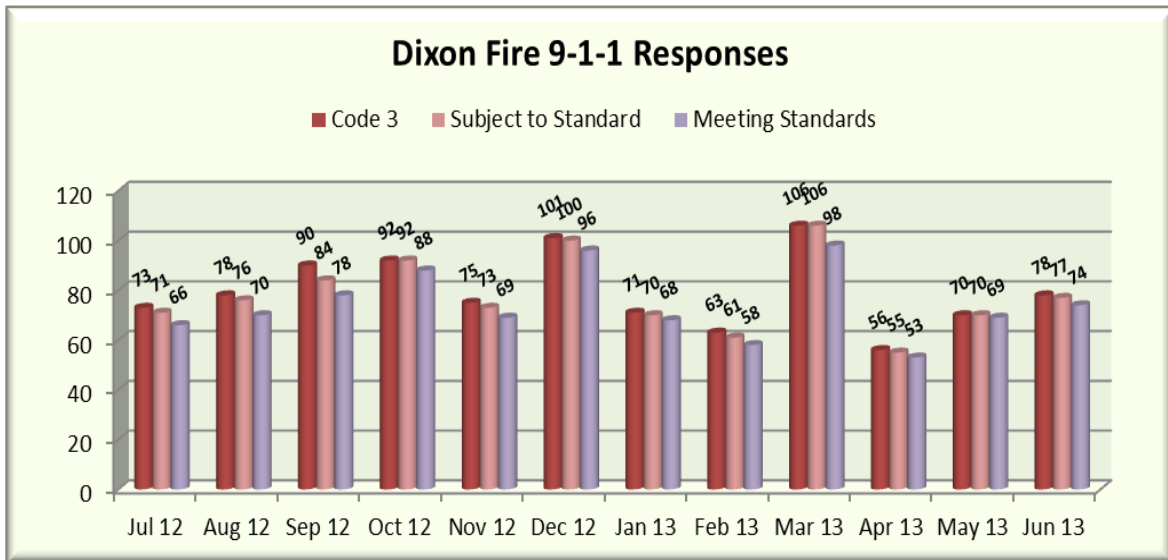


### 3. Dixon

The City of Dixon lies in the northern portion of Solano County and is in a predominantly rural area. The city covers 6.7 square miles and the estimated population was 18,449 in January 2013. Their population grew by 4.8% compared to 2011.

Dixon Fire Department provides the ALS First Response for Dixon and the areas surrounding. They responded to a total of 938 “9-1-1” calls during this reporting period.

Their average compliance percentage (at seven minutes) for the reporting period was 94.9%. Medic Ambulance provides ambulance transport, with an average response time of greater than 98% at 12 minutes.





# SOLANO COUNTY EMERGENCY MEDICAL SERVICES ANNUAL REPORT July 1, 2012 – June 30, 2013



## 4. Benicia

With an estimated population of 27,163 in January 2013, Benicia is the fifth most populous city in Solano County. Benicia Fire Department provides ALS First Response for the citizens of Benicia as well as those persons visiting the area, with Medic Ambulance, Inc. as the transporting ambulance provider. With a total of 1,423 911 responses, the response time percentage for Benicia Fire Department for the July 2012 – June 2013 reporting period was calculated at 95.7% at seven minutes or less. Medic Ambulance’s average response time percentage was at 99% at 12 minutes.

