



FY 2005-2006 Annual Report



Part I

Solano County Commission Narrative

County Commission's Priorities in Strategic Plan

Pertinent Solano Data

Solano continues to grow at a pace greater than that of most other San Francisco Bay Area Counties and, unlike some counties, Solano's growth is driven by its birth rate. Moreover, minorities comprise 61% of Solano's children under age 5 compared to 52% of the overall population in the county. With almost 19,000 children aged 0-5 with parents in the labor force in 2004 (including 62% of mothers of this age group), a median annual rent cost of \$14,052 for a two-bedroom apartment, a 15% 0-5 child poverty rate and an annual cost of \$7,402 for full-time licensed center care for a preschooler, families continue to experience significant challenges in their efforts to provide environments that are safe, stable, healthy and geared toward optimum early development. Solano's unemployment rate is the highest in the Bay Area and its Cal-Works and Food Stamp populations have increased over the past four years.

29% of the County's families speak a language (primarily Spanish) other than English in their homes. There are significant pre- and perinatal disparities associated with pregnancy and birth outcomes among African-American women and teens in Solano County. Percentages of women of all ethnicities receiving early prenatal care continues to lag behind state averages and the percentages of infants with low birthweight born to immigrant mothers is significantly higher than that of the state as a whole.

Solano's efforts to ensure that all children have health insurance (almost 100%) have boosted to the County's rate of child coverage significantly higher than the statewide rate, while the percentage of children lacking dental coverage remains in the double-digits. According to the 2003 California Health Interview Survey (CHIS), less than 50% of Solano's young children eat at least 5 servings of fruits and vegetables per day, and childhood obesity in the County is over 16%. Full immunization rates of Kindergarteners exceed the state average, but are still below the Healthy People 2010 goal (92.8% versus 95%). The number of children reporting asthma attacks (77.9%) and ER/urgent care for asthma (70.6%) is far higher than state averages (54.1% and 46.4% respectively). The number of children birth-to-five in Foster Care placement has declined significantly from 2004-2005 (217 to 161) and the percentage of children exiting the system to permanent care increased from 70% to 81%.

Solano parents report reading to their children every day at a rate higher than that of the state as a whole, but 6% of Solano's parents of children under 4 reported they *never* read to their child. About 30% of kindergarteners scheduled to start school in Fall 2005 attended a pre-kindergarten preparation program, and over 90% of Solano's Kindergarteners were enrolled prior to the start of the school year. There was space for only 629 of the 2,392 Solano children who qualified for Head Start in 2001. Only 667 Solano children were able to enroll in Head Start in FY 05-06.

First 5 Strategic Plan Priorities

The data above reflects some of the challenges as well as some of the achievements and improvement attributable, in part, to the implementation of the First 5 Solano Children and Families Commission Strategic Plan. First 5 Solano's Strategic Plan, which was last updated in 2004, generated a two-year funding cycle that was at midpoint at the close of FY 05-06. The Strategic Plan addresses three Priority Areas (and several Goal Areas under each Priority) through six Initiatives and other system-change efforts, with funded programs and services linking to the Strategic Plan through identification of specific Result Areas associated with each Goal. The Strategic Plan was designed to promote system-level improvements for all children prenatal to five while addressing some of the most pressing and urgent family issues in Solano County: prenatal care and disparities in birth outcomes; quality, affordable child care; parent/family support; access to children's health care and related services, including children with special needs; children's early development; and school readiness.

Solano County Commission Narrative

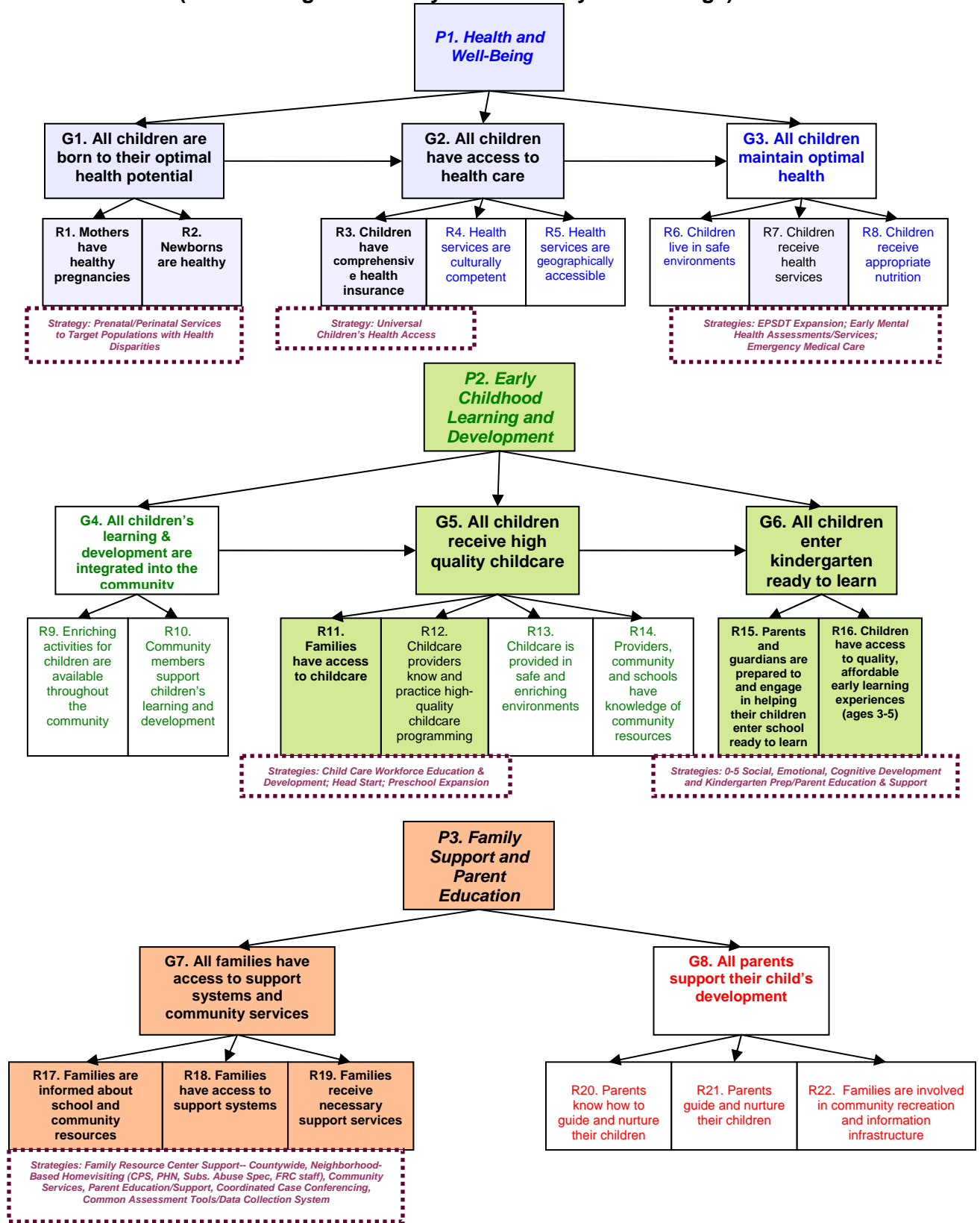
The 2004 Strategic Plan is organized under the rubric of Priorities, Goals and Results, with specific Indicators tracked at both the program and community levels. The Commission's three Priority areas for funding are Health and Well-Being, Early Childhood Learning and Development and Family Support and Parent Education. In the current funding cycle (FY 05-07), funding is prioritized as follows:

1. **Health and Well-Being**—major initiatives are: BabyFirst Solano initiative, which offers prenatal services to special populations (teen parents and African-American women), with a second phase of comprehensive services addressing prenatal use of substances launched in early 2006; the Regional Children's Health Initiative, aimed at achieving full health insurance coverage and portability for children in Solano, Napa, Sonoma and Yolo Counties; the Early Mental Health Services initiative featured expansion of EPSDT (Early Periodic Screening, Diagnosis, and Treatment) and other early development support such as substance-abuse related Parent Education.
2. **Early Childhood Learning and Development**—School Readiness initiative, consisting of funded services and activities in 4 school/community catchment areas representing some of the lowest-income families and lowest-performing schools in the county; and CARES (Comprehensive Approaches to Raising Educational Standards), a major investment in the growth, quality and retention rates of the child care workforce. In addition, the Commission funded the development of Solano County's Preschool for All Plan in 2005-06.
3. **Family Support and Parent Education**—IFSI (Integrated Family Support Initiative) continued throughout FY 05-06, with continued to support for not only services but collaboration and service integration across a network of eight Family Resource Centers (FRCs) in the county, as well as support for the multi-disciplinary Homevisiting Program for high-risk families (featuring a Child Protective Services Social Worker, Public Health Nurse and (as of July 2006) Substance Abuse Specialist). In addition, extensive training of trainers in the Nurturing Parent Program resulted in significant expansion of this curriculum throughout Solano County.

First 5 Solano has now experienced a full year of working with grantees whose services and programs are based on Logic Model scopes of work and evaluation plans, featuring established service targets and effectiveness measures, with programmatic and technical support provided by Commission staff, the Commission's Evaluator, Regional technical assistance and First 5 California staff/support. First 5 Solano's significantly strengthened infrastructure provides strong support for the tracking and measurement of Commission investments as well as for its abiding commitment to system-change efforts for children 0-5 and their families. (For example, four of the six First 5 Solano initiatives have Commission-funded collaborative structures.) To ensure stability and continuity of funding, First 5 Solano Children and Families Commission continue to adhere to its Strategic Plan Framework, Long-Term Financial Plan and Three-Year Program Investment Framework.

Over the course of 2006, the Commission embarked on an update to its Strategic Plan which is expected to be finalized by the end of the year. This updated Plan will guide the Commission's deliberations and decisions for the next funding cycle, which begins in July 2007.

**2004 Strategic Plan Framework—
2005-07 Funding Cycle Highlighted Priorities, Goals, Results and Funded Strategies
(Overarching Goal: Early Childhood System Change)**



Solano County Commission Narrative

Primary Activities and Programs, by Funding Priorities:

Solano County participated in the following statewide initiatives sponsored by First 5 California during fiscal year 2005-06.

- School Readiness Initiative
- Special Needs Project
- Power of Preschool
- Health Access for All Children
- Comprehensive Approaches to Raising Educational Standards (CARES)

**First 5 Solano Children and Families Commission 2005-06 Annual Report to First 5 California:
Part 1, Section 2b – Primary Activities and Programs, by Funding Priorities**

The following table provides a comprehensive summary of First 5 Solano’s primary activities and programs organized by funding priority. Key accomplishments and outcomes are described.

| Grantee/Initiative | Accomplishment Highlights |
|---|---|
| PRIORITY 1: Health and Well-Being | |
| <p>Prenatal Care Collaborative Initiative – “BabyFirst Solano”</p> | <ul style="list-style-type: none"> ✓ Successfully began integration of a substance abuse and treatment component (referred to as “Prenatal II”) into the overall collaborative initiative. ✓ Dr. Ira Chasnoff, a leading researcher from the Children’s Research Triangle, brought to Solano County to educate and train BabyFirst Solano members on the most recent science on screening, assessment and treatment of women who are using and/or abusing substances during pregnancy. ✓ Nine out of ten (90%) pregnant teens entered first or second trimester care; for teens in the program, the rate of first trimester care is higher than the rate for the County overall (60% compared to 55%). ✓ 100% of 127 teen clients that delivered or exited the program before delivery (moved out of county or transferred to another program, such as Cal-Learn) attended 60% or more of their scheduled prenatal care visits. ✓ <i>The rate of preterm birth for teens in the program (7.4%) is lower than both the state (13%) and national (11%) rates, and is lower than the Healthy People 2010 objective of 7.6%.</i> ✓ <i>The rate of full-term births for infants in the African-American Prenatal Initiative is 84.2% despite five sets of twins being delivered in this fiscal year.</i> |
| <p>Solano County Health and Social Services – Black Infant Health: <i>Provide prenatal support services countywide for high-risk pregnant African-American women.</i></p> | <ul style="list-style-type: none"> ✓ Expanded the “Role of Men” program targeting African-American fathers with 42 fathers attending classes. ✓ All but one African-American woman in the program (98.6%) attended at least 60 % of their prenatal care visits. ✓ 92.9% of African-American women in the program entered prenatal care in the first (55.4%) or second (37.5%) trimester. |

**First 5 Solano Children and Families Commission 2005-06 Annual Report to First 5 California:
Part 1, Section 2b – Primary Activities and Programs, by Funding Priorities**

| Grantee/Initiative | Accomplishment Highlights |
|--|---|
| <p>Solano County Health and Social Services – Adolescent Family Life Program: <i>Provide prenatal support services countywide for high-risk pregnant teens.</i></p> | <ul style="list-style-type: none"> ✓ 92.8% of teen clients entered prenatal care in the first (67.6%) or second (25.2%) trimester. ✓ 99 (100%) clients attended 60% or more of their scheduled prenatal care appointments. |
| <p>Solano County Health and Social Services – Prenatal Care Guidance-Teens: <i>Provide prenatal support services countywide for high-risk pregnant teens</i></p> | <ul style="list-style-type: none"> ✓ 82.9% of teen program participants entered prenatal care in the first (44.3%) or second (38.6%) trimester. The PCG-Teens Program serves the highest risk teens, many of whom are homeless, using substances, or incarcerated; consequently, these teens have a lower rate of early entry to prenatal care than those in the Adolescent Family Life Program. |
| <p>California Hispanic Commission – It’s All About My Baby: <i>Prenatal support services for teens located in northern Solano County.</i></p> | <ul style="list-style-type: none"> ✓ Provided case management to 40 families. ✓ 71 participants attended 75% of prenatal appointments. ✓ 90% (27) of babies born to clients during the FY have a medical home. ✓ 52 participants demonstrated increased knowledge of health pregnancies and their own bodies. |
| <p>Everlasting Hope Ministries – Nubian Mentoring Program: <i>Mentoring and social development services delivered to pregnant African-American women in Vallejo.</i></p> | <ul style="list-style-type: none"> ✓ 100% of clients increased their knowledge of healthy pregnancies, their own bodies, and health in general. ✓ 91% of clients attended 75% of their prenatal appointments. |
| <p>Prenatal Substance Abuse Initiative</p> | <ul style="list-style-type: none"> ✓ The Prenatal Substance Abuse Initiative started programming and began collecting data in March of 2006. Initially, NorthBay Medical Center’s ABC Prenatal Program began tracking how many women were screened for using substances using their current screening tool. The average rate of positive screens for women using alcohol, tobacco, and other drugs (ATOD) was 5.1% from March-June 2006. Women who were identified as using were then connected to the appropriate services, including tobacco cessation on-site substance abuse services, and substance abuse treatment (if needed). ✓ 431 women screened for ATOD. ✓ 5.1% (22) found to be using ATOD. Of these, 8 were connected with smoking cessation services, 14 were linked to substance abuse services (other than smoking cessation), and all (22) are being case managed. |

**First 5 Solano Children and Families Commission 2005-06 Annual Report to First 5 California:
Part 1, Section 2b – Primary Activities and Programs, by Funding Priorities**

| Grantee/Initiative | Accomplishment Highlights |
|--|--|
| Early Childhood Mental Health Initiative | |
| <p>Families First – Early Childhood Mental Health: <i>Mental health services to children 0-5 and their families in order to increase the level of parent-child interaction and bonding, and increase the parenting skills and connection to community resources.</i></p> | <ul style="list-style-type: none"> ✓ 66.7% of families served increased their parenting skills and bonding with their children. ✓ 66.7% of children treated improved their social and emotional behavior. ✓ 84.2% of families served accessed needed community resources. |
| <p>Children’s Nurturing Project – Welcome Baby: <i>Provision of family-friendly, home-based early and sequential screening for mental health, developmental, behavioral, and health concerns to newborns, infants, and toddlers so that they can receive immediate assistance and referrals to services for special needs identified, resulting in children developing to their optimal potential and parents having the necessary support services in place for their children’s special needs.</i></p> | <ul style="list-style-type: none"> ✓ 123 of 128 children were linked with a primary care provider. The other 5 children were new residents to Solano County and are in the process of establishing a primary care provider. ✓ 127 of 128 families (99.2%) demonstrated knowledge and awareness of age-appropriate developmental milestones. ✓ In January 2006, began administering a depression screening instrument for the parent/ primary caregiver during the home visit. |
| <p>Child Start – Early Mental Health Services: <i>Behavioral and mental health services to Head Start students located in each school readiness catchment area.</i></p> | <ul style="list-style-type: none"> ✓ 79% of 4-year-olds enrolled demonstrate proficiency in all 8 domains of learning assessed, indicating they are in the process of acquiring language, literacy and math skills. ✓ 83.6% of children showed growth in at least one indicator in the social/emotional domain area of the Pearson Education Inc’s Work Sampling for Head Start Developmental Checklists. |
| <p>Solano County Health and Social Services – Early Periodic Screening, Diagnosis and Treatment: <i>Mental health services to children 0-5 through the leveraging of Early Period Screening, Diagnosis and Treatment funding.</i></p> | <ul style="list-style-type: none"> ✓ 55 of 61 Child Haven clients (90%) met the clinical criteria for successful treatment of mental health issues. |

**First 5 Solano Children and Families Commission 2005-06 Annual Report to First 5 California:
Part 1, Section 2b – Primary Activities and Programs, by Funding Priorities**

| Grantee/Initiative | Accomplishment Highlights |
|--|--|
| Health Access/Children’s Health Initiative | |
| <p>Solano Coalition for Better Health – SKIP: <i>Assistance to families with uninsured children ages 0-5 to successfully apply for subsidized health insurance and maintain health coverage.</i></p> | <ul style="list-style-type: none"> ✓ Submitted health insurance applications for a total of 939 children ages 0-5, and for 3,131 people total countywide. ✓ The current rate of uninsured children in the County is estimated at 2.6%, continuing the decline in uninsured children in the County. ✓ SKIP’s school strategy is being replicated in Napa, Orange, and Humboldt/Del Norte Counties. ✓ CHDP Gateway enrollees are mostly newborns, indicating that older children have health insurance and they do not need to use the gateway designed for uninsured kids. |
| PRIORITY 2: Early Childhood Learning and Development | |
| <p>School Readiness Initiative</p> | <ul style="list-style-type: none"> ✓ The percentages of children who fully or almost mastered all items in each MDRDP dimension in 2005-2006 have increased over 10% from 2004-2005 for First 5 Solano School Readiness sites and have surpassed the statewide results. ✓ More parents from the 2005-2006 cohort report being very or somewhat knowledgeable in child development than those from the 2004-2005 cohort (94% as compared to 89%). ✓ Parents continue to engage in developmental activities with their child leading up to entry into kindergarten and continue to prepare their child for kindergarten by visiting the school or meeting with a teacher before school starts. ✓ Parents whose child attended a Pre-Kindergarten Academy at one of the First 5 Solano School Readiness sites report positive impacts on their child’s academic and social development. |

**First 5 Solano Children and Families Commission 2005-06 Annual Report to First 5 California:
Part 1, Section 2b – Primary Activities and Programs, by Funding Priorities**

| Grantee/Initiative | Accomplishment Highlights |
|---|--|
| <p>Dixon Unified School District – Silveyville Primary School: <i>Services to help parents prepare their young children to enter school healthy, learning, and ready to reach their greatest potential in the Silveyville Primary School catchment area.</i></p> | <ul style="list-style-type: none"> ✓ Conducted a summer Pre-K Academy for 40 children entering kindergarten at Silveyville in the fall ✓ Conducted parent education events on topics ranging from School Readiness to effects of second hand smoke. ✓ Held a Health and Literacy Fair attended by over 100 families. ✓ 14 children received a dental exam at the Health and Literacy Fair and 20 other children received dental exams through a dental van visit organized by the program. |
| <p>Vacaville Unified School District – Markham Elementary School: <i>Services to help parents prepare their young children to enter school healthy, learning, and ready to reach their greatest potential in the Markham Elementary School catchment area.</i></p> | <ul style="list-style-type: none"> ✓ Served approximately 400 families with children ages 0-5 through bilingual story hours, distribution of parent kits, and other resources and referrals ✓ Provided dental exams to 16 children through a visit from the Toothmobile ✓ Provided parent education programs and other materials and resources to families in Spanish. |
| <p>Vallejo City Unified School District – Loma Vista Elementary School: <i>Services to help parents prepare their young children to enter school healthy, learning, and ready to reach their greatest potential in the Loma Vista Elementary School catchment area.</i></p> | <ul style="list-style-type: none"> ✓ Provided parent education and support, health and social services and resources and referrals through the Parent Resource Center to over 250 children and their families. ✓ Conducted a summer Pre-K Academy for children entering kindergarten at Loma Vista. ✓ The program met the needs of Spanish-only speaking parents by linking them to parent education programs in Spanish and providing other materials and resources in Spanish. |
| <p>Fairfield Unified School District – Anna Kyle Elementary School: <i>Services to help parents prepare their young children to enter school healthy, learning, and ready to reach their greatest potential in the Anna Kyle Elementary School catchment area.</i></p> | <ul style="list-style-type: none"> ✓ Provided 164 literacy packets and 50 School Readiness Packets to parents with children 0-5. ✓ Provided 100 childcare referrals. ✓ Piloted a Pre-Kindergarten Academy for 24 four-year olds. ✓ Provided 18 families with emergency health care through CHAP referrals. ✓ Organized a total of 112 classes serving 726 parents and 344 children on an array of topics including effective discipline and child abuse and prevention. |

**First 5 Solano Children and Families Commission 2005-06 Annual Report to First 5 California:
Part 1, Section 2b – Primary Activities and Programs, by Funding Priorities**

| Grantee/Initiative | Accomplishment Highlights |
|---|---|
| <p>ABCD Constructing Connections: <i>Create a streamlined process for the financing, construction, and development of child care facilities in Solano County.</i></p> | <ul style="list-style-type: none"> ✓ Held a Financial Summit to garner interest from local lenders to offer appropriate grant and loan products for parties interested in creating new facilities. ✓ Made connections with city staff members and/or private developers in Vacaville, Fairfield, Dixon and Suisun City on a total of 6 developments in which child care could be included. ✓ Provided technical assistance to over 30 providers interested in expanding their services. |
| <p>Children’s Network/CARES: <i>Provides trainings and stipends to child care providers as an incentive to continue and advance in the field of early childhood education.</i></p> | <ul style="list-style-type: none"> ✓ 14 informational/outreach sessions on CARES stipends and training were held for providers, exceeding the target number of 5 sessions. ✓ 241 providers received stipends, exceeding the target number of 200 providers. ✓ Over 110 CARES participants received specialized training and support on a variety of issues/topics including ECERS trainings, English language tutoring, and School Readiness training. ✓ Turnover rates of providers participating in CARES stayed well below the rates of pre-CARES total workforce turnover rates for Teacher Assistants and Teachers. ✓ Turnover rates of Teachers declined significantly from 25% in 2001 to 7% in 2006. |
| <p>City of Benicia - Stepping Stones: <i>Child care support for the Stepping Stones teen parent education program.</i></p> | <ul style="list-style-type: none"> ✓ Infants in program exhibit appropriate developmental milestones. ✓ Three of three pregnant/parenting teens displayed effective parenting skills. |
| PRIORITY 3: Family Support and Education | |
| <p>Family Resource Center Services Initiative (IFSI) The Children’s Network/IFSI, lead agency: <i>Coordination and integration of care for at-risk populations utilizing eight Family Resource Centers, Heather House Homeless Shelter, a Public Health Nurse and Child Protective Services Social Worker Home Visitor and the Solano Parenting Partnership.</i></p> | <ul style="list-style-type: none"> ✓ Training, technical support and coordination services to 8 FRCs (Family Resource Centers), serving over 2,174 unduplicated families and 2,931 children aged 0-5 years¹. ✓ 2 Parent Education providers were trained in the <i>Effective Black Parenting Program</i> as part of the Parenting Partnership. ✓ <i>Safe from The Start</i> “Train the Trainers” was offered through the coordination of the Parenting Partnership and Office of Family Violence Prevention. |

¹ Due to an input error these numbers reflect the work of the 8 FRCS through the first 3 quarters of the contract year. The error is being addressed, and revised numbers will be shared with First 5 California when available.

**First 5 Solano Children and Families Commission 2005-06 Annual Report to First 5 California:
Part 1, Section 2b – Primary Activities and Programs, by Funding Priorities**

| Grantee/Initiative | Accomplishment Highlights |
|---|---|
| <p>City of Benicia Police Department – Benicia FRC: <i>Information and referral, home visitation, with staff supervision to families with children 0-5 living in the city of Benicia.</i></p> | <ul style="list-style-type: none"> ✓ 30 families report increased awareness of the effects of exposure to violence on children. ✓ 62 families report sufficient knowledge and skills to improve family functioning. |
| <p>Dixon Family Services – Dixon FRC <i>Information and referral, home visitation, with staff supervision to families with children 0-5 living in the catchment areas of Silveyville Primary School.</i></p> | <ul style="list-style-type: none"> ✓ 665 families reported an increased knowledge of and access to community resources. |
| <p>Fairfield-Suisun Unified School District – Fairfield and Suisun FRCs: <i>Information and referral, home visitation, with staff supervision to families with children 0-5 living in the cities of Fairfield and Suisun.</i></p> | <ul style="list-style-type: none"> ✓ 100 families increased their knowledge of parenting skills. ✓ 218 families reported an increased knowledge of and access to community resources. ✓ 77 families reported they increased their skills and knowledge to support family functioning |
| <p>Rio Vista CARE – Rio Vista FRC: <i>Information and referral, home visitation, with staff supervision to families with children 0-5 living in the city of Rio Vista.</i></p> | <ul style="list-style-type: none"> ✓ 38 families reported an increased knowledge of and access to community resources. ✓ 37 families report an ability to better meet their basic needs. |
| <p>Vacaville Police Department – Vacaville FRC VacaFirst: <i>Information and referral, home visitation, with staff supervision to families with children 0-5 living in the city of Vacaville.</i></p> | <ul style="list-style-type: none"> ✓ 112 families achieved a score of 3 or higher on the Family Development Matrix's Social and Emotional Health category. ✓ 34 families reported an increase in parenting knowledge to sufficient levels based on the AAPI. |
| <p>Fighting Back Partnership – North Vallejo and Sereno Village FRC: <i>Provide school readiness preparedness information and referral, home visitation, with staff supervision to families with children 0-5 living in the Loma Vista Elementary catchment area.</i></p> | <ul style="list-style-type: none"> ✓ 194 families increased their ability to access community resources. ✓ 50 families reported they increased their skills and knowledge to support family functioning |

**First 5 Solano Children and Families Commission 2005-06 Annual Report to First 5 California:
Part 1, Section 2b – Primary Activities and Programs, by Funding Priorities**

| Grantee/Initiative | Accomplishment Highlights |
|---|---|
| <p>Child Haven (IFSI home visitation): <i>Home visits and parent support groups to Spanish speaking families in Rio Vista and Benicia</i></p> | <ul style="list-style-type: none"> ✓ Nine geographically and linguistically isolated families received multiple home visits and report an increase in knowledge of child abuse prevention strategies, an increase in knowledge of parenting skills, and an increase in knowledge of and access to community resources. |
| <p>Public Health Nurse and Child Protective Services Social Worker Home Visitor: <i>Create access to integrated support systems provided by H&SS and Family Resource Centers that address child abuse and neglect, and the need for early health assessments for children ages 0-5.</i></p> | <ul style="list-style-type: none"> ✓ 200 children received attention for their health concerns by receiving health services. ✓ Over 200 families were served by CPS worker, and 10 children from three families required foster care placement. The rest were able to remain with their families. |
| <p>Heather House Homeless Shelter: <i>Provide basic needs, school readiness preparedness information and referral, and staff supervision to families with children 0-5 living in the Heather House Homeless Shelter.</i></p> | <ul style="list-style-type: none"> ✓ 47% of families served remained in permanent housing for 90 days. ✓ 47% of families served moved to stable on the Social/Emotional Health and Competence Component of the Family Development Matrix. |

Solano County Commission Narrative

Program Highlights

Healthy Kids Solano

Healthy Kids Solano is administered by the Partnership Health Plan of California. In December 2005, Healthy Kids Solano became the first program to become operational in the State with Napa, Sonoma, and Yolo counties adding programs shortly after. The program's main objective is to ensure children have access to health insurance. Although Solano County has the highest rate of insured children in the state 97.7% (2003 CHIS Study, UCLA), there are still 4-5,000 children who are uninsured. Most of these children will qualify for state sponsored programs such as Medi-Cal or Healthy Families. For children who do not, Healthy Kids will provide medical, dental, and vision benefits for 1,200 children. The program focuses on improved child health and improved systems of care.

Healthy Kids is modeled after the State's Healthy Families program. There are currently 22 counties who have introduced or will introduce a Healthy Kids type program. Research has shown that when affordable health insurance options are available for children, enrollment in state sponsored programs increases significantly. These programs allow the state to draw down Federal dollars which will increase revenue to the State. Kids with insurance perform better and miss less school than those without and every 1,000 kids that has access to health insurance brings in more than \$1Million per year to help pay for health care services.

The program is designed to provide comprehensive health, dental, and vision insurance for kids ages 0 -19 with a \$5 co-payment for most services. Children ages 0-5 represent approximately 30% of total children enrolled in Healthy Kids and State sponsored programs combined. In addition, Healthy Kids members have access to a variety of health education opportunities, preventive health care services, and can receive assistance through the Partnership Health Plan of California member services with assistance on how to navigate the health care system and answer benefit questions. If a child is in need of immediate care, families are connected to a medical or dental provider for needed urgent care services while waiting for the insurance to become effective. A majority of the children who qualify for the program are mono-lingual Spanish speaking families. To address the needs of the Spanish-speaking population, all health access specialists who assist families with enrollment are bilingual and most bi-cultural. All program materials provided to the family, including the application, written correspondence, and benefit information, are provided in Spanish and at an appropriate literacy level.

The program has positively impacted children by increasing the number of children with health insurance. In Solano County 97.7% of children are insured. The Healthy Kids Solano program currently has 1,000 children enrolled. There are 33 schools where most (96% or higher) children and their younger siblings have health insurance. All enrolled children now have a medical and dental home.

Solano County Commission Narrative

Program Highlights

BabyFirst Solano

In Solano County, health outcomes for pregnant women and infants fall short of the national standards set by the Healthy People 2010 objectives, especially when broken down by race and ethnicity. Despite significant gains over the past decade, much work remains. For example, African American infants born in Solano are twice as likely to be born at low birth weight (5 pounds and 8 ounces or less) and more likely to die before their first birthday than their counterparts. Furthermore, Solano County's teen birth rates are the highest in the Bay Area. Additionally, one out of four pregnant women in Solano does not access prenatal care in the first trimester, and only half of Medi-Cal women enter early prenatal care.

In response, in 2000, First 5 Solano convened a year long community-wide task force to focus on these issues. Consequently, in 2003, First 5 Solano funded BabyFirst Solano, a public and private partnership, committed to making sure all babies in Solano County are born healthy and live in a nurturing environment where they will thrive. Solano County Health & Social Services leverages First 5 Solano funds to secure federal matching dollars under Maternal, Child, and Adolescent Health program.

BabyFirst Solano focuses on three target populations: pregnant and parenting teens; pregnant and parenting African American women and their families; and women at risk for or using substances during pregnancy. Solano County Health & Social Services acts as the lead agency in this partnership, which also includes the ABC Prenatal Care Clinic, Adolescent Family Life Program, Black Infant Health, Latino Family Services, Nubian Mentoring Program, Partnership Health Plan of California, and Youth & Family Services. One of the stated goals of the project is to create changes in the service system through collaboration. Regular and formal communication between the partner agencies improves service referrals and decreases duplication. Collaboration has fostered a team spirit between agencies that did not previously exist. The success of the collaboration has improved the level of services provided to pregnant moms, new moms, babies and their families, and consequent outcomes.

BabyFirst Solano provides comprehensive case management services to an *additional* 500 pregnant and postpartum moms and their families (estimated figure for 2005-2006 Fiscal Year). These services include a home visiting program by case managers, public health nurses, and social workers to provide optimal support to pregnant and postpartum moms and their families. The services also include client events and workshops to support and educate pregnant moms and families about different aspects of pregnancy and parenthood. The services are specifically developed to meet the diverse needs of our clients. For example, materials and services are provided in multiple languages and we solicit feedback from clients to make sure we are meeting the needs of clients.

BabyFirst Solano also has a launched a project to identify and address prenatal substance use in the prenatal care setting. The program is modeled after Kaiser Permanente's successful *Early Start* program. As in the *Early Start* program, pregnant women receive prenatal substance use education and services in the prenatal care setting by highly skilled medical professionals. BabyFirst Solano is also working with the Children's Research Triangle, a leading national expert in the field of prenatal substance use, to develop a screening and assessment tool so that more women receive substance abuse education and services earlier in their pregnancies.

Solano County Commission Narrative

BabyFirst Solano aims to increase the number of women entering early prenatal care and improve birth outcomes for high-risk populations. As mentioned above, only half of Medi-Cal pregnant women enter early prenatal care in Solano. Nearly all pregnant and parenting moms in our program are enrolled in Medi-Cal (85%-90%). Through our extensive case management services, in 2004-2005 Fiscal Year, nearly three out of four pregnant moms (72%), receiving BabyFirst Solano case management services, entered early prenatal care. Additionally, nearly all African American infants (93.3%) were born after 37 weeks of gestation and/or more than five pounds and eight ounces (04-05 FY). Finally, nearly all (97.3%) infants born to teens were connected to health insurance and a medical provider (04-05 FY).

Solano County Commission Narrative

Program Highlight

ABCD Constructing Connections

The Affordable Buildings for Children's Development (ABCD) Constructing Connections program is administered by the Children's Network of Solano County and is housed in Solano County Child Care Planning Council. The program addresses the need for more high quality child care and development centers in Solano County and aims to address the systematic barriers to creating more child care spaces. The program focuses on improved systems of care and improved child development.

ABCD is a ground breaking initiative, developed and supported by the David and Lucile Packard Foundation. Its purpose is to build a comprehensive and sustainable system for financing and developing quality center-based child care facilities in California. The Low Income Investment Fund (LIIF) is a national community development financial institution (CDFI) that provides the institutional home for ABCD. LIIF provides affordable capital and technical assistance to organizations working to alleviate poverty in low-income neighborhoods. Since 1984, LIIF has provided \$379M in capital for affordable housing, child care, education and other community facilities. This assistance has in turn, leveraged investments in low-income communities of more than \$3.3B, a leverage ratio of eight to one. These investments have supported: 46,200 units of low income and special needs housing, 16,180 child care spaces, 1,955 spaces in charter schools for children, and 1.7M square feet of community space.

ABCD is designed to provide support to those interested in developing a child care center. The program provides technical assistance and support to anyone interested in developing a child care center. The technical assistance provided ranges from resource materials to site visits with cities, developing business plans, and seeking additional financing for the project. A collaborative of a variety of stakeholders (i.e. real estate developers, housing developers, child care operators, Cities, and consultants) meet regularly to work towards creating more effective strategies to address facilities development barriers. The program also provides marketing training, facility needs assessments, assistance with financing, outreach, and advocacy. The program also works to improve systems to make the facilities development process more streamlined. New quality child care and development programs directly benefit children ages 0 through 5. High quality services provide enriching environments for children that will be prepare them for success in school, allow parents to work, help ensure a strong economy in the future, and much more.

Children's Network program is staffed by a group of highly trained professionals. The staff includes a Child Care Program Director, who oversees the program and brings child care expertise to the project, and a Facilities Development Coordinator, who has extensive background in planning and development.

Children's Network has provided technical assistance and support that has resulted in three new licensed programs and over 60 new child care center-based slots for children and families in Solano County.

Solano County Commission Narrative

Program Highlight

Markham School Readiness

Markham School Readiness (SR) program is housed in Markham Elementary School. The program's main objective is to better prepare children for school. To accomplish this, the program offers a multitude of services to children and families including: healthcare insurance enrollment assistance for children, parent education classes, preschool for children ages 3-4, literacy training for parents and children, translation and legal services for families, counseling for families, and resource and referral services. The program focuses on improved child health, improved child development, and improved family functioning.

The Markham SR program is as much community based as it is research based. Members of the community heavily influenced the grant-writing process by conducting a needs assessment for the community. Based on that information, the program was designed to specifically meet the needs identified by members of the community. In its second year of operation the program has begun to develop into a research based program. Progress and services are monitored by the parent leadership council and staff members, as needs become apparent, the program adapts to meet those needs.

The program is designed to serve children ages 0-5. Children are directly served by low-cost health insurance services and the preschool program, which includes 40 children. Children are indirectly served through the parenting education services offered by the program. Approximately 95% of the clients are from monolingual Latino families. To address the needs of the Spanish-speaking population, all materials and services are offered in Spanish and English. The staff are predominantly bilingual and from bicultural backgrounds. Another subgroup has emerged as the program progresses. It became evident that women made up a big part of the program's participants. In order to serve them more effectively, the SR program offered more parenting education classes, as well as hiring a family support worker to assist and counsel the mothers with domestic issues.

The program aims to achieve health insurance for all of the children ages 0-5 in its community. The program also seeks to increase the number of children in preschool. In order to achieve these outcomes, the Markham SR program offers the following services and activities: bilingual story hour for parents and children, Latino literacy project for adults, a nurturing parent project offered in Spanish and English, counseling services, healthcare services, health and literacy fair, and parent education. Spanish-speaking families are offered services to specifically meet their needs. For example, it was discovered that many of their Spanish-speaking clients were not able to read in their native language. The parent leadership council discussed this issue and decided to offer a parent literacy class to help these clients. A teacher was hired, and a curriculum designed to assist these parents with Spanish literacy. The SR program meets another need of the community because of its accessibility. The program is centrally located, allowing all community members the opportunity and convenience to come by the program more frequently.

The Markham SR program is staffed by a group of dedicated individuals, who have successfully been able to reach members of the community. The staff includes a program coordinator, administrative assistant, health insurance coordinator (2 days a week), nurse practitioner (1 day a week), family support worker, parent liaison, and an Americorp member. Most of the staff is bilingual.

Solano County Commission Narrative

The program has positively impacted children and families by increasing the number of children with health insurance. Many positive changes have come from this component of the SR program. Since the program inception, the number of urgent care visits, from children ages 0-5, has decreased each year. During the first year there were more referrals to urgent care. Now in the second year, the health insurance coordinator has been able to assist more families with getting their children enrolled with health insurance, lowering the number of urgent care cases. The nurse practitioner has also contributed to the decrease in cases. She is able to diagnose and treat children, preventing the necessity of urgent care trips.

The SR program has also had a positive effect on oral healthcare in the community. Many children were not receiving oral health services before the SR program introduced the tooth mobile at the health and literacy fair. In the program's first year, only provided 2 visits to the program; once it became apparent that this was a huge need for the children, the tooth mobile was brought back 4 times during the second year. Children who had never received oral healthcare now have the opportunity to receive services on a regular basis.

Data is collected on services provided to children and families, and entered into the Persimmony data collection system. The program is able to run reports and use the information to create their annual report. The parent leadership council meets on a regular basis to review the progress of the program and assess the needs of the community.

Solano County Commission Narrative

Systems Change

What were you trying to change and why?

Research conducted by First 5 Solano and BabyFirst Solano in 2004 revealed a need to address the use and abuse of substances among pregnant teens and women and a lack of easily accessible and available services in the community. This holds particularly true for BabyFirst Solano's initial target population of pregnant African American women and families and pregnant teens throughout the county.

In FY 2005-06, BabyFirst Solano expanded to include a prenatal substance abuse component as a result of a Prenatal Services funding solicitation led by First 5 Solano Children and Families Commission. The target population for the prevention, early identification and treatment services delivered and coordinated through this funding are: pregnant/prenatal women and infants up to six months old.

Who was involved?

The BabyFirst Solano collaborative is led by Solano Health and Social Services (H&SS) and includes a wide variety of partners:

Prenatal Services Phase I: Black Infant Health (BIH), Adolescent Family Life Program (AFLP), Latino Family Services, Nubian Mentoring Program, Prenatal Care Guidance Program, Partnership Health Plan and Youth and Family Services.

Prenatal Services Phase II (added through expansion): H&SS County Substance Abuse Services, Melvin Thompson Center, Sutter Solano Medical Center, North Bay Medical Center and California Hispanic Commission on Alcohol and Drug Abuse and collaborating agencies funded directly by First 5 Solano.

Providing national expertise and data to this effort is Dr. Ira Chasnoff, Children's Research Triangle (a premier researcher in this field). He has been working with the BabyFirst Solano Collaborative since the launch of Phase II.

What agreements, changes, or products resulted from this work?

BabyFirst Solano formed a workgroup to identify and address barriers to prenatal care. Primary strategies included outreach to women who might not receive prenatal care and get them in to the system; screening of all pregnant women for substance use as a routine part of prenatal care; assessment of those pregnant women who screen positively for substance use and referrals of all women to appropriate treatment services within the community

How, ultimately, are children and families better served because of these activities?

Providers and community members are now more aware of the risks associated with substance use during pregnancy as well as the treatment options available to improve birth outcomes. Providers are working closely with BabyFirst Solano and Dr. Chasnoff to develop and utilize tools (i.e., 4P's Plus) to increase the effectiveness and efficiency in screening and assessment in an effort to get women in to care earlier.

Solano County Commission Narrative

Although still in the early stages of implementation, the ATOD component of BabyFirst Solano has started to make inroads in to the community as is evidenced by the data presented in the table below.

March – June 2006, Prenatal Phase II

| Measure | Number | Percentage |
|---|--------|------------|
| Total screened for ATOD | 431 | |
| Total women using ATOD | 22 | 5.1% |
| Total women connected to smoking cessation | 8 | 1.9% |
| Total women linked to substance abuse services (other than smoking cessation) | 14 | 3.2% |
| Total women in case management | 22 | 5.1% |

Solano County Commission Narrative

Systems Change

School Readiness Initiative: Building Bridges for Preschoolers to Cross to Kindergarten

What were you trying to change and why? Who was involved?

In 2005-2006 three First 5 Solano School Readiness sites held articulation meetings with preschool and kindergarten teachers in their respective catchment areas. The meetings were designed to raise awareness about the school readiness program in Solano, to engage community leaders in preparing kids for school and, most importantly, to encourage ongoing communication between preschool and kindergarten teachers in order to ensure children are prepared for their entry into kindergarten.

What agreements, changes, or products resulted from this work? How, ultimately, are children and families better served because of these activities?

Several School Readiness sites used these meetings as an opportunity to share the results of the MDRDP² and Parent Surveys. This was a springboard for conversations about the developmental areas in which children in those catchment areas need the most support. The kindergarten teachers found the meetings especially validating and encouraging, observing that children often enter their classroom unprepared, which is frustrating and throws off their curriculum and timing; and they appreciated the opportunity to improve school readiness for future classes of entering kindergarteners.

Together, the kindergarten and preschool teachers developed a list of strategies for the preschool teachers to implement in their classrooms as well as a list of milestones for children leaving preschool to reach before entering kindergarten. The preschool teachers committed to incorporating new activities into their curricula to support the development of children's reading, writing, language, math and social skills. The meetings helped focus the work of the preschool teachers and make it more intentional.

Articulation meetings will continue on a quarterly basis at most School Readiness sites and both preschool and kindergarten teachers look forward to the continued collaboration.

² Modified Desired Results Developmental Profile (the First 5 California-approved assessment tool)

Solano County Commission Narrative

Child/Family/Provider Vignette

FamiliesFirst

I worked with this Hispanic family for six months. The two parents are in their forties and they have four children: Jules, 15, Diego, 14, Monica, 7 and Maria, 3. When I started working with the mother, Sonja, she was frustrated with her youngest daughter's frequent tantrums. She tried spanking, yelling and even bribing to get her daughter to comply with her commands, but Maria continued to whine, cry, stomp her feet, scream, hit, and hold her breath until she turned blue. Sonja remember when Diego was her age that he too had tantrums a lot and was such a handful as a toddler that she was embarrassed to bring him to family gatherings or out into the public. Sonja was afraid that her daughter was headed for the same types of trouble if she did not get some help. Determined not to go through the same nightmare with her daughter, Sonja reached out to Families First when she heard me give a presentation on our new Early Childhood Mental Health Program at one of her English classes.

This family is very representative of most of our Hispanic Families. The father was the only one who worked and brought in enough money to barely cover expenses for their household. For three months, he was unemployed during the course of our work together, forcing him to take out a loan with his brother to make ends meet. The three school-aged children spoke English outside the home and Spanish in the home. The youngest daughter, at age 2 when we started working with the family, understood a lot of English, but mostly spoke Spanish. The father was bilingual to a limited extent, but was learning English on the job. The mother was taking English classes to become more fluent in English; however she was most comfortable with Spanish. She wanted an English speaking therapist to work with her family, so that she could become even more fluent in English. While I worked within her home using only English, I would provide her with Spanish literature that discussed the skills I was teaching her in the Parenting Classes.

During the course of the program, I met with Sonja and Maria weekly for 1 ½ hours where we discussed specific problems that she had with Maria and spent time practicing skills Sonja learned in the parenting class. During the sessions, we would focus on one specific negative behavior at a time. As I engaged in Play Therapy with Maria, Sonja had an opportunity to see her child's areas of difficulty from a different perspective. When Maria began to tantrum with me, Sonja would observe how I would handle difficulties in a positive manner. Afterwards, Sonja would have time to ask questions and I would tell her how I was viewing the situation and possibly what Maria may have been trying to gain with her behavior. The last part of the session always ended with one-on-one parent-child play where Sonja would practice the skill she learned. This allowed her time to ask more questions or get help if she got stuck. Even if no negative behaviors took place during this fifteen minute period, Sonja and Arianna were building a more positive attachment to each other thus enhancing their bond. As far as Maria was concerned, the session was full of play and lots of positive attention. Maria began looking forward to the sessions along with her mother who was looking for relief from the negative interactions she once had.

For four months out of the six months I was with the family, Sonja also attended weekly Parenting Classes that were 2 hours in length. The parenting classes were based on Carolyn Webster-Stratton's Incredible Years Basic Parenting Program. Skills were taught verbally and then reinforced by viewing videotapes of actual parents practicing the skill. Parents would have an opportunity to critique the parent by first mentioning what was positive in the vignette and then what could have been improved. Homework for each class included reading the parenting book in English. Because Sonja was a beginning reader I also sent her home with a Spanish version of the literature and a Spanish CD of the book being read aloud. During the parenting classes, Maria went to a childcare group where she was given one-on-one attention focusing on her social skills with adults and other children present.

Solano County Commission Narrative

One of the first skills Sonja learned was how to engage in Child-Centered Play with her daughter. Through play she could model cooperation, sharing, patience and turn-taking. As Sonja played with Maria every day for 10-60 minutes, she noticed that the tantrums were decreasing and that her daughter was no longer hanging on her all day long pestering her for attention. Another bonus of spending this valuable time with her daughter was that she found ways to teach her daughter letters, numbers, colors and shapes thus preparing her daughter for Preschool. Sonja learned how to make learning fun for her daughter by following our suggestions on how to teach a child through play. Maria benefited from the play, because she had regularly scheduled time to bond with her mother. After about a month of consistent play with her mother where her mother demonstrated pro-social behaviors, Maria's social skills grew. In the child-directed play, Maria was given legitimate periods of time where she could control her environment, thus decreasing her need to try to be in control all the time. Her mother was able to model cooperation with her requests, thus making it easier for Maria to cooperate with her mother's requests when it really counted.

The next skill set Sonja learned in the classes was how to Praise and Reward her daughter's positive behaviors. As Sonja started applying the skills learned in the class, she found that her daughter loved the hugs, the kisses and the high-fives for good behavior so much that Maria did not fight her so much. In the beginning of therapy with the family, Maria took sometimes 2 hours to get ready in the mornings. She would fight her mother on what clothes she would wear and how her hair was done to the point that her mother usually ended the struggle yelling and spanking her and forcing clothes on her. When she started limiting her daughter's choices to two outfits each morning and learned to use Planned Ignoring of her daughter's whining and fussing by walking out of the room, Maria was getting dressed in less than 15 minutes within a few weeks without long, drawn out fights that set a negative tone for the day. Sonja was using Social Praise as a motivator to keep her daughter on track during the dressing process. In addition, Sonja found that the Praise was working so well with Maria that she started using it with her other children and found that all the children were treating each other with more respect as Sonja modeled positive attention for positive behaviors.

For some of Maria's more difficult behaviors, such as noncompliance with some of her mother's commands, Sonja learned how to use a sticker chart as a way of rewarding Maria for compliant behaviors. It got to the point that Maria would do the most unpleasant of tasks, just to be able to pick out a sticker. Her other children liked the idea so much that they were asking for a chore list so that they could earn points toward earning a privilege. Sonja commented during one parenting class, "I didn't think I would ever get Diego (her 14 year old son) to empty the trash or mow the lawn without asking him a dozen times." Diego no longer needed more than one reminder before he was complying with his chores. He earned time on-line, driving time with his dad out on a deserted road, and having friends over night. Although Diego was not the identified client, his procrastinating behaviors decreased allowing him to have a more positive relationship with his parents.

In the event that Maria refused to comply, Sonja learned how to use Natural and Logical Consequences, Time-Out and removal of privileges. Sonja learned to use Time-Out only for the extreme behaviors such as screaming or hitting. In the beginning of therapy, Sonja was either spanking or putting Maria in Time-Out over six times per day. Maria would sit in Time-Out and scream the entire time. During play therapy, we showed Maria the process of Time-Out with her dolls who "misbehaved." As Maria got more familiar with the process, she no longer spanked her dolls and her dolls would sit very quietly until Maria would let them play again. At the end of therapy, Maria was not getting spanked anymore and was only spending time in Time-Out at the most once per day if at all while not screaming for at least one minute of the three minute time period. At times she would not scream at all, only whimper for a minute or so.

Solano County Commission Narrative

The very last goal Sonja wanted to work on was getting her daughter to sleep in her own bed instead of with her and her husband. At the beginning of therapy, Maria would start screaming and crying if anyone even mentioned sleeping in another room. So slowly we started weaning Maria from the family bed by moving her into her crib, next to her parents, then slowly moving the crib further and further away. During Play Therapy, both Sonja and I would help Maria to put her dolls to bed. In this way, we formed a nightly ritual of her dolls getting tucked in, read to and then tiptoeing out of the room so the “babies” could sleep. In this way, Maria became more comfortable with talking about the possibility of sleeping in the bed with her dolls. About five months into the therapy, Sonja was using her creativity to come up with workable solutions. She decided to have her husband take Maria to the gym with him to swim for 45 minutes just before bed. Maria was so tired when she got home that she didn’t fight it when they tucked her into her own bed in her own room. In the morning, Maria would receive four stickers of her choosing and would get to dance with her father when he got home from work. It was at this point that the parents realized that they were able to help Maria successfully without the program.

Although Maria will not go to preschool for another year, her mother had learned to prepare her daughter through play. Not only could she teach her numbers, letters, and shapes, but she could also teach her how to share, take turns, and use her words to voice her frustrations rather than hitting or yelling. She could now take her into public without worrying about tantrums because she learned how to anticipate Maria’s needs and creatively deal with problems in a positive manner.

Not all parents who come into the program follow the program as well as Sonja did. However, each parent and child that has been in this program has learned at least some of the skills and most tend to apply the use of Praise and Reward to turn negative behaviors around. Many parents have commented that the program has given them more positive tools to deal with misbehavior and that the skills learned are easy and common sense practices. Across the board we have noticed improvement in the parent-child relationship and in parental stress around misbehaviors. We have noticed a decrease in spanking and yelling and an increase in attention toward positive behaviors. Parents are leaving the program with more of an understanding of developmental milestones and more of an awareness of their own behavior serving as a model for their children.

Solano County Commission Narrative

Child/Family/Provider Vignette

Welcome Baby (Children's Nurturing Project)

"Kerry" is a 20 year old mother of "Benjamin", who was 8 months old at the time she requested a home visit from Children's Nurturing Project's First 5 Solano funded "Welcome Baby" program. Benjamin was born 10 weeks prematurely and had complex medical needs at birth, resulting in chronic lung disease when he was discharged from the NICU. Kerry, and her boyfriend Kevin, were homeless at the time and living in a small motel room with Benjamin, which is where CNP Family Support Specialist Rosa Cortes made her first home visit.

Although Benjamin was connected with a pediatrician and specialty providers, Kerry was not receiving early intervention or family support services for Benjamin. Rosa conducted the first developmental screening with Benjamin and Kerry, which showed significant delays in his motor skills, cognition, and social development. Correcting for his premature birth, he was still approximately 50% delayed for age. Rosa consulted with the CNP pediatric RN, who made a joint visit soon after with Rosa to confirm the delays and assess Benjamin's medical needs. Immediate referrals were made to North Bay Regional Center (California Early Start) to enroll him in early intervention services. Referrals were also made to the local Family Resource Center for assistance with basic needs and housing resources. At this visit, Kerry told staff that she was pregnant with her second child, and was worried that she may have another premature baby. Rosa linked Kerry with Public Health Nursing and prenatal care to follow her pregnancy closely.

Rosa continued to visit Benjamin every 2 months to assess his progress and work with Kerry on ways to help facilitate the baby's development. The Early Start worker concurred with CNP's assessment and began early intervention services with him as well. In May, 2006, Kerry gave birth to a healthy full term baby girl, Abigail. Rosa made a newborn home visit to enroll Abigail in the Welcome baby program as well as continue to follow Benjamin until he reaches age 2 and is firmly engaged in appropriate services.

Solano County Commission Narrative

Child/Family/Provider Vignette

Rio Vista CARE/Family Resource Center

Rio Vista CARE/Family Resource Center and Child Haven have been working with a Hispanic, Spanish monolingual 4-year-old boy who has severe communication delay.

During a home visit to a family enrolled in the Family Support Services Initiative (FSSI) program, we noticed a little boy not speaking at all, and communicating by doing hand gestures and sounds. The 4 four year old was a member of another family living within the household. The young boy's mother was very young and inexperienced and did not have any concerns with her child. She felt it was normal because her mother told her that she was also a late talker.

We then told the mother of the 4-year-old child of our services and asked if she would be interested in enrolling her family in the FSSI program. She said she was interested and we started educating the mother by doing general developmental assessments. We found out that the child was in need of a more thorough speech evaluation. We referred him to River Delta Unified School District, bilingual speech therapist Jeff Simpson. During his first appointment with the speech therapist, it was determined that the child would need a hearing evaluation. It was very important to conduct a hearing evaluation in child's native tongue to have a precise diagnosis.

The child was then referred to Solano County Special Education Local Plan Area - Hearing Evaluation located in Fairfield for a hearing evaluation. The evaluation was performed in April 2006 and the child was diagnosed with massive earwax in his ear canal, thus interfering with his hearing and affecting his communication skills. The child had tremendous hearing loss, but fortunately, it was corrected when earwax was removed.

A follow-up visit was scheduled in the first week of June 2006. During the visit, we noticed that the child showed great improvement, the child has started to talk and mom has noticed that he is more attentive to other people conversations and is picking up on a lot of words. An Individual Education Plan was recommended and because the child will be entering into kindergarten this fall arrangements will be made with River Delta Unified School District. Another service being provided to the child is that of a Migrant Education teacher who is helping the child with his communication delay in preparation for his entrance into Kindergarten this Fall 2006.

There has been great difficulty in trying to accomplish this task due to transportation and language barriers that were involved. It took various attempts to make the appointment with the speech therapist and another couple of attempts to keep the appointment with the staff Solano County Special Education Local Plan Area- Hearing Evaluation. Finally, all was accomplished and the child is now on his way to receive an education and integrate into the school system.

Solano County Commission Narrative

County Commission Profile.

Please indicate below whether you would like SRI International to prepare your County Commission profile or your County Commission is preparing its own draft profile. If your County Commission wants to prepare its own profile, please follow directions provided in the **County Commission Profile Guidelines**.

- My County Commission is preparing and attaching a draft of its own profile, using the **County Commission Profile Guidelines**.
- SRI International should prepare a draft of my County Commission's profile.

Solano County Commission Narrative

County Commission Funding Priority Outcomes and Indicators

Directions: Please check all the outcomes listed below that were local funding priorities in fiscal year 2005-06. The associated population-based and core participant indicators do not need to be marked.

| Funding Priority Outcome | Population-Based Data | Core Participants | |
|--|--|---|--|
| | | Key Indicators | Elective Indicators |
| <input checked="" type="checkbox"/> Children are born healthy. | <ul style="list-style-type: none"> • Infant survival rate • Number and percentage of births at low birth weight • Number and percentage of births at very low birth weight • Number and percentage of live births in which mothers received late or no prenatal care | <ul style="list-style-type: none"> • Number and percentage of births at low birth weight • Number and percentage of births at very low birth weight • Number and percentage of live births in which mothers received late or no prenatal care | |
| <input checked="" type="checkbox"/> Children receive preventive and ongoing regular health care. | <ul style="list-style-type: none"> • Number and percentage of children who receive the recommended vaccines for their age • Number and percentage of children with a regular medical home • Number and percentage of children who have health insurance | <ul style="list-style-type: none"> • Number and percentage of children who receive the recommended number of well-baby and child checkups by age 2 • Number and percentage of children with a regular medical home • Number and percentage of children who have health insurance | <ul style="list-style-type: none"> • Number and percentage of children who receive the recommended vaccines for their age |
| <input checked="" type="checkbox"/> Children are in healthy and safe environments. | <ul style="list-style-type: none"> • Number and rate of nonfatal injuries to children ages 0 to 5 requiring medical advice or treatment | | |

Solano County Commission Narrative

| Funding Priority Outcome | Population-Based Data | Core Participants | |
|--|---|--|---|
| | | Key Indicators | Elective Indicators |
| <input checked="" type="checkbox"/> Children are healthy and well nourished. | <ul style="list-style-type: none"> • Number and percentage of children whose parents rate them to be in very good or excellent health • Number and percentage of women who are breastfeeding at time of hospital discharge/ 6 weeks or more/6 months or more • Number and percentage of children 0 to 5 years of age who are in the expected range of weight for their age | <ul style="list-style-type: none"> • Number and percentage of women who are breastfeeding at time of hospital discharge/ 6 weeks or more/6 months or more | <ul style="list-style-type: none"> • Number and percentage of children whose parents rate them to be in very good or excellent health • Number and percentage of children 0 to 5 years of age who are in the expected range of weight for their age |
| <input type="checkbox"/> Children have good oral health. | <ul style="list-style-type: none"> • Number and percentage of children age 3 or older who receive annual dental exams • Number and percentage of children who have dental insurance | <ul style="list-style-type: none"> • Number and percentage of children age 3 or older who receive annual dental exams | <ul style="list-style-type: none"> • Number and percentage of children ages 0 to 5 years who have dental insurance |

Solano County Commission Narrative

| Funding Priority Outcome | Population-Based Data | Core Participants | |
|--|---|--|---------------------|
| | | Key Indicators | Elective Indicators |
| <input checked="" type="checkbox"/> Children are free of smoking-related illnesses. | | <ul style="list-style-type: none"> • Number and percentage of children who live in households where no adults smoke • Number and percentage of women who did not smoke during pregnancy | |
| <input checked="" type="checkbox"/> Children have access to high-quality early care and education. | <ul style="list-style-type: none"> • Number of licensed center child care spaces per 100 children • Number of licensed family child care slots per 100 children • Number of Head Start slots per 100 low-income children • Number and percentage of licensed center child care spaces for children with special needs | | |
| <input checked="" type="checkbox"/> Children participate in early childhood education programs. | <ul style="list-style-type: none"> • Number and percentage of children ages 0 to 5 who regularly attended a nursery school, pre-kindergarten, or Head Start program by the time of kindergarten entry • Percentage of children with special needs who participate in early childhood care and education programs | <ul style="list-style-type: none"> • Number and percentage of children ages 0 to 5 who regularly attended a nursery school, pre-kindergarten, or Head Start program by the time of kindergarten entry • Percentage of children with special needs who participate in early childhood care and education programs | |

Solano County Commission Narrative

| Funding Priority Outcome | Population-Based Data | Core Participants | |
|--|--|--|---|
| | | Key Indicators | Elective Indicators |
| <input checked="" type="checkbox"/> Children receive early screening/intervention for developmental delays, disabilities, and other special needs. | <ul style="list-style-type: none"> Number and percentage of children identified as having special needs by the time of kindergarten entry | <ul style="list-style-type: none"> Number and percentage of children identified as having special needs by the time of kindergarten entry | <ul style="list-style-type: none"> Number and percentage of children under age 3 who receive a developmental screening from their primary care provider Number and percentage of children identified with disabilities who receive developmental services by the time of kindergarten entry |
| <input checked="" type="checkbox"/> Children enter kindergarten “ready for school.” | Number and percentage of children entering kindergarten ready for school as determined by assessments completed by teachers and parents that indicate the child is ready in the areas of cognitive, social, emotional, language, approaches to learning, and health/physical development | | <ul style="list-style-type: none"> Number and percentage of children who participate in school-linked transitional practices |
| <input checked="" type="checkbox"/> Children live in home environments supportive of optimal cognitive development. | <ul style="list-style-type: none"> Number and percentage of families who report reading or telling stories regularly to their children, 3 to 5 years of age | <ul style="list-style-type: none"> Number and percentage of families who report reading or telling stories regularly to their children, 3 to 5 years of age | |

Solano County Commission Narrative

| Funding Priority Outcome | Population-Based Data | Core Participants | |
|---|---|-------------------|---|
| | | Key Indicators | Elective Indicators |
| <input checked="" type="checkbox"/> Children are safe from intentional injuries in their homes and communities. | <ul style="list-style-type: none"> • Number and percentage of children with substantiated or confirmed (open) cases of child abuse • Number and percentage of child maltreatment in which there is a recurrence within a 6-month period | | |
| <input checked="" type="checkbox"/> Fewer teens have babies, and more parenting teens delay subsequent pregnancies. | <ul style="list-style-type: none"> • Number and rate of births to young teenage mothers | | <ul style="list-style-type: none"> • Number and rate of births to young teenage mothers |
| <input checked="" type="checkbox"/> Families are self-sufficient. | <ul style="list-style-type: none"> • Number and percentage of children living in poverty | | <ul style="list-style-type: none"> • Number and percentage of children living in poverty • Number and percentage of parents reporting food security (i.e., no hunger, as opposed to moderate or severe hunger) • Number and percentage of children who move more than once in a year • Number and percentage of mothers who completed high school or its equivalent |

Solano County Commission Narrative

| Funding Priority Outcome | Population-Based Data | Core Participants | |
|---|---|-------------------|--|
| | | Key Indicators | Elective Indicators |
| <input checked="" type="checkbox"/> Parents provide nurturing and positive emotional support to their children. | | | <ul style="list-style-type: none"> • Number and percentage of mothers screened for depression |
| <input checked="" type="checkbox"/> Children achieve permanency. | <ul style="list-style-type: none"> • Number and percentage of children 0 to 5 years of age who have lived in foster care within the past year • Number and percentage of children 0 to 5 years of age in foster care who are placed in a permanent home | | |

Solano County Commission Narrative

First 5 Solano: Organizational, Administrative, Policy and System-Building Activities and Accomplishments Fiscal Year 2005-06

Commission/Staff Changes

Dr. Sharon Tucker joined First 5 Solano as the Commissioner appointed by Supervisor John Silva, District 2. David Carrillo and Kathi McLaughlin left the Commission staff; Christine Shipman and Norma Lisenko joined the Commission staff as Contract and Program Specialists for Priority 1/Health and Well-Being and part-time Community Engagement Coordinator, respectively.

First 5 Solano Committees

Community Engagement--An ad hoc Community Engagement Committee was formed to address the implementation of the First 5 Solano Communication Plan and to increase community involvement in the Commission's work. Commissioner Sheryl Fairchild served as Chair with Commissioners Stephan Betz and Maureen McSweeney serving as Committee members. Commissioner Debbie Gossell also participated on this Committee at its inception.

The Committee developed a "Commissioner Job Description" which was adopted by First 5 Solano and serves as a guideline for representing First 5 Solano effectively as a Commissioner. As the Commission's designee for overseeing "Week of the Young Child" activities, the Committee worked over several months to develop a community resource brochure. The 2006 Solano "Community Matters" Community Resources Brochure (slated for release in October 2006) contains contact information for "gateway" organizations throughout the County that serve young children and their families, as well as contacts for emergency services and space for organizations distributing the brochures to list their own contact information.

After spending substantial time prioritizing and developing a process/timeline to implement the Communications Plan, implementation was postponed so the Committee could carry out the Commission's direction to serve as the body responsible for gathering community input for the First 5 Solano Strategic Plan Update. The Committee worked over several months to fulfill this request, culminating in the submission of the Community Input Report 2006 to the First 5 Commission in October 2006. In March 2006 the Community Engagement Committee was made a Standing Committee of First 5 Solano.

Internal Systems Committee—Commissioner Stephan Betz (Chair) and Commission Committee Members Sheryl Fairchild and Jan Maguire served on the IS Committee. In addition to its regular work of monitoring fiscal activities and overseeing internal policy development, this Committee developed a proposal, approved by the Commission, to add a Grantwriting Fund to its Co-Sponsorship of Conferences and Training Fund. Of the additional \$20,000 budgeted, \$15,000 was issued in 3 increments for grant applications by community service providers to foundations for early childhood mental health systems development,

Solano County Commission Narrative

sustainability and expansion of prenatal mentoring programs targeting African-American women and family support services³.

Grants for Co-Sponsorship of Training/Events included awards for child care environmental rating scales training, parent education facilitator training, early childhood mental health training, "Protecting the Spirit of Childhood" conference and a community leaders training on social issues.

This Committee also served as the Commission's resource for developing strategic planning activities for the full Commission's participation.

Program Committee—Commissioner Maureen McSweeney (Chair) and Commissioner Committee Members Dr. Elaine Norinsky, Norma Thigpen and Dr. Sharon Tucker worked diligently over the year to support the important programmatic work of the Commission. In addition to its regular work, this Committee became the Commission's designated monitor of quarterly reports outlining services and outcomes of grantee organizations.

The Program Committee also oversaw the implementation of the 2005-07 Funding Cycle, reviewing Logic Model Scopes of Work and addressing requests for service design modifications as appropriate.

Overall—In 2006, each First 5 Standing Committee reviewed and revised its Committee Structure and duties to incorporate the evolution of the Commission and the addition of the Community Engagement Committee as a Standing Committee.

First 5 Association Liaison—Commissioner Debbee Gossell served as the Commissioner Liaison to First 5 Association, attending many of the Association as well as First 5 California meetings and giving input from the Commissioner perspective. In addition, Commissioners Dr. Elaine Norinsky, Barbara Kondylis and Debbee Gossell represented First 5 Solano at the 2006 First 5 California Annual Conference.

Commissioner/Staff Community Planning/Systems Development Activities

In 2006, the Commission allocated funds toward the development of an update for the Solano Children's Report Card. Commissioners and staff also participated on or in a number of community coalitions, alliances, community strategic planning and policy bodies in FY 05-06. These included:

- *Children's Planning and Policy Council*. The CPPC, which consists of leaders from among the coalitions/organization members of the Solano Children's Alliance, spent the year developing a comprehensive matrix of the major components of most of the strategic plans for children and families in Solano. Out of this matrix, the CPPC reviewed and identified areas of service gaps and overlaps. As the year closed, the CPPC was expanding the matrix to include funding streams, with the goal of honing in on ways to better utilize and leverage local, foundation, state and federal dollars for the children and family service system.

³ All three applications are still pending

Solano County Commission Narrative

- *Early Mental Health System Planning.* Commission staff participated in strategic planning and plans for utilization of the first round of Mental Health Services Act (“Proposition 63”) funding. In addition, staff and a Commissioner participated in the development of a California Endowment grant application for early childhood mental health system development, submitted by the Children’s Nurturing Project. First 5 Solano also organized a team of early childhood mental health system representatives to participate in a regional planning session sponsored by the First 5 Bay Area Region.
- *Oral Health Strategic Plan.* The Executive Director participated in the development of a comprehensive Solano Oral Health Strategic Plan, scheduled for completion and launch in FY 06-07.
- *Regional Children’s Health Initiative (Napa, Solano, Sonoma and Yolo Counties).* Solano First 5 staff and Commissioners regularly attend and assist in the work of the developing Regional CHI. This group oversees the expansion and quality of the County’s and the Region’s universal children’s health coverage initiative, with the goal of 100% coverage, full access to and utilization of health care and portability of health coverage. Partnership Health Plan is the plan provider for all four counties.
- *Other Community Collaboratives.* First 5 staff are assigned to, and regularly attend, a wide variety of community committees, collaboratives and policy bodies, such as the Children’s Alliance, Child Abuse Prevention Council, Child Care Local Planning Council, Solano Coalition for Better Health’s Enroll and Retain Sub-Committee, BabyFirst Collaborative, IFSI (Integrated Family Support Initiative) Collaborative and the Health and Social Services Sub-Committee of the Board of Supervisors. First 5 Commissioners Norma Thigpen, Elaine Norinsky, Maureen McSweeney, Barbara Kondylis are among the Commissioner participants in these bodies.
- *Preschool for All.* First 5 Solano funded the development and early implementation of a Countywide Solano Preschool for All Plan. First 5 Commissioner Jan Maguire served as Co-Chair of this group along with Dee Alarcon, County Superintendent of Schools, with participation by Commissioners Maureen McSweeney and Debbie Gossell. The development of a comprehensive plan included the convening of a multidisciplinary Advisory Group and Finance Group. The Plan was presented to the Commission, Solano School Superintendents, the Board of Supervisors and is slated for presentation to various groups around the County. The PFA Advisory and Finance Groups were combined and re-convened in August 2006, identifying 4 implementation project areas and agreeing to meet quarterly to monitor and support implementation of the Solano Preschool for All Plan.

Infrastructure

There were a number of actions at the state level that generated changes for County First 5 Commissions. The passage of AB109 and SB35 required local Commissions to adopt new policies and make changes to local statutes, including limits of administrative costs, salary and benefits rules and changes to audit scopes and procedures, conflict of interest rules and contracting policy and procedures. The administrative impact for First 5 Solano was minor given that the Commission already adhered to established County policies and procedures in most of these areas.

Solano County Commission Narrative

The First 5 Executive Director served on a statewide Evaluation Work Group to develop new Evaluation Framework that was adopted by First 5 California during FY 05-06 and implemented on July 1, 2006. First 5 Solano ensured that all staff and grantees were trained on the new Framework and changes to reporting and tracking of data and outcomes in a timely manner. The Commission's data collection system was updated to reflect the new Framework requirements.

First 5 Solano reviewed its current policies to eliminate and/or update outdated policies and established a new policy on signature authority for letters of support for grant applications by other agencies. Last but not least, the Commission's office was remodeled over the course of several months, with an Open House/First 5 anniversary celebration held in Spring 2006 to welcome Commissioners and the public back to the renovated space.

First 5 Solano held its first Financial Planning Workshop, organized and delivered by Fiscal and Contracts Administrator Michele Harris, in February 2006. The Commission reviewed all aspects of its Long-Term Financial Plan and Three Year Program Investment Framework and made changes as appropriate.

Programmatic/System-Change Achievements

Leveraging First 5 Funds. First 5 Solano's funds leveraged \$4,000,920 into Solano County in FY 05-06, including First 5 California matching funds, federal and state dollars matching First 5 investments in services, and public/private foundation dollars.

BabyFirst Solano. In 2006, First 5 Solano's grantee, Health and Social Services, launched Phase II of the Prenatal Services Initiative and BabyFirst Solano was established as the collaborative for both phases of the Initiative. The E.D., Commissioners Kondylis and Thigpen and many other BabyFirst Partners participated in a 4-day training on prenatal/perinatal substance abuse by Dr. Ira Chasnoff and his staff, resulting in the implementation of the "4-Ps Plus" screening tool for BabyFirst Solano.

Substance Abuse Services. The Commission also funded and launched services through grantees Children's Nurturing Project, California Hispanic Commission and Youth and Family to provide substance abuse-related parent education and establish Substance Abuse Specialist services as part of the IFSI.

Quality Child Care Improvement Project. This project, featuring ECERS (Early Childhood Environmental Rating Scale) training, Mini-Grants of up to \$5,000 and improvements of an average of 3 points on the 7-point rating scale, was successfully concluded in FY 05-06.

New Parent Kits. Over 2,000 New Parent Kits were issued, a substantial reduction from years past due to changes in the distribution methods used by First 5 California and a slowdown in anticipation of issuance of a new Kit format.

Neighborhood Investment Strategy Meetings. Individual meetings were held in the four School Readiness Catchment Areas. Many of the First 5-funded service providers in these neighborhoods had not met with each other to discuss their cumulative knowledge and experience with the populations they serve. Each of the 4 groups developed one or more

Solano County Commission Narrative

“community indicators” that are being tracked by the Commission’s Evaluator, LaFrance Associates, to help quantify the impact of comprehensive neighborhood services.

Evaluation, Data Collection and Technical Assistance

Data Collection and Tracking: Commission staff and grantees transitioned from OCERS to the Persimmony system during FY 05-06. Contract and Program Specialist Michael Stover worked with Persimmony’s Michael Kogus, Office Assistant II Joanie Curren and First 5 staff to ensure a smooth transition, including developing user-friendly data collection forms, staff and grantee training, extensive technical assistance, follow-up and monitoring of data quality, and reporting data to the First 5 Solano Commission and First 5 California. First 5 Solano was the first County in California to submit its electronic data upload at the end of 2004-05, and successfully uploaded its FY 2005-06 data earlier in September 2006.

First 5 Solano Annual Evaluation Report. LaFrance Associates, assisted by Commission staff, produced the first annual First 5 Solano Evaluation Report in 2006. The Report featured a grantee survey, review of initiatives, and extensive information about the volume and quality of services provided by First 5 Solano grantees. The next report will be issued in January 2007 and feature analysis of a full year of data from the current funding cycle as well as initiative-level evaluation information, results of a Family Survey conducted in Fall 2006, and review of progress of Commission investments against “lead” indicators of community health, strength and well-being.

School Readiness Initiative Kindergarten Readiness Assessment. The second annual KRA Report was issued in Spring 2006 and showed improvement across the board in competencies of entering Kindergarteners in School Readiness sites. This encouraging data is being used as a tool at the site level to increase the intentionality and comprehensive nature of services at each site.

Quarterly Grantee Training and Technical Assistance Meetings. The four meetings this fiscal year covered topics including new State Evaluation Framework Implementation, Results Accountability, Public Affairs support and information on local programs and services such as Reach Out and Read and Solano Community Foundation’s free, grant search database.

Week of the Young Child

Solano County made April “Children’s Month, including many activities commemorating national “Week of the Young Child”. The 2006 WOYC theme was “Building Better Futures for All Children.

In addition, First 5 participated in a multi-agency, joint presentation resulting in a proclamation by the Board of Supervisors celebrating national “Week of the Young Child”, other commemorations involving children, and local events around a number of April observances related to children— Child Abuse Prevention Month; Month of the Military Child; Week of the Young Child (April 2-8); Court Appointed Special Advocates (CASA) “Light of Hope” Day (April 13); and Children’s Memorial Day (April 28).

First 5 Solano funded grassroots, community events designed in part to provide community engagement and outreach to inform neighborhood residents about services for young children. The Children’s Network organized and widely publicized a community calendar of April events.

Solano County Commission Narrative

First 5 Solano also supported publication of a comprehensive Parent Resource Supplement in 7 newspapers across the County during Week of the Young Child to raise awareness about the availability of local services.

Awards/Presentations

- *100 Best Communities Award.* Solano County was one of 7 sites in California honored as one of the “100 Best Communities in America for Youth” by Washington DC’s America’s Promise. This award was truly a community effort, with literally dozens of people and organizations represented in the application. That said, Solano was honored in part for programs and services in which First 5 Solano plays a significant role (as funder, participant or both).

America’s Promise cited Solano’s “100% health coverage for children” campaign and its extensive networks of collaboratives, especially the Children’s Alliance, which is facilitated by the Children’s Network of Solano County, along with its data-driven approach, supported by the Solano Children’s Report Card, as integral to the selection of Solano from among hundreds of applicants for this award.

Board of Supervisor member/First 5 Commissioner Barbara Kondylis, First 5 Executive Director Christina Linville and SKIP (Solano Kids Insurance Program) Director Jacque McLaughlin represented Solano County in Washington, DC at the “100 Best Communities” awards/training conference. Supervisor John Vasquez led a Solano delegation--George Vasquez of Fighting Back Partnership, Christina Linville of First 5 Solano, Maria Moses of CASA (Court-Appointed Special Advocates), Kim Thomas of the Children’s Network and Pastor Willie Graham of the Vacaville Police Department/FRC--to a subsequent “100 Best Communities” training conference in Long Beach, CA.

- *NACo “Counties Care for Kids” Award.* The National Association of Counties bestowed one of three nationwide “Counties Care for Kids” awards on Solano County for its Integrated Family Support Initiative, or IFSI. IFSI features a coordinated network of Family Resource Centers using a common database and common assessment tool, a Homevisiting Program for high-risk families, multidisciplinary case conferencing, case management, information and referral, parent education and basic needs provision.
- *“All About the Kids” Day.* Commissioners Dr. Elaine Norinsky and Norma Thigpen and E.D. Christina Linville traveled to Sacramento with representatives of over two dozen County First 5 Commissions to inform and educate their Legislative Delegations on the services and activities of First 5 Commissions. This was the second annual event, and Solano’s first year of participation.
- *Presentations.* An IFSI Team including Commissioner Barbara Kondylis, Children’s Network Executive Director Kim Thomas, Anna Kyle FRC Director Ana Dineen and IFSI Homevisitor/Child Protective Services Social Worker Veronica Piper-Jefferson were invited to make a presentation on IFSI (“The House that Collaboration Built”) at the First 5 California State Conference. A packed house was impressed by the extensive collaboration and outcomes of the IFSI and as a result, another IFSI team (Commissioner Kondylis, First 5 Solano Executive Director Christina Linville, Vallejo FRC Director

Solano County Commission Narrative

Josephine Wilson and IFSI Homevisitor/Child Protective Services Social Worker Olga Duran) made a second, successful presentation of IFSI in Calaveras County.

First 5 Solano Fiscal and Contracts Administrator Michele Harris was invited to present First 5 Solano's Long-Term Financial Plan at the 2006 First 5 California Annual Conference, and to make a presentation on Cost Allocation Plans and Time Studies at the 2006 First 5 Association's Annual Staff Summit. First 5 Solano's Venis Jones Boyd was also invited to make a presentation at the Staff Summit on Administrative Procedures.

Strategic Planning

First 5 Solano staff and Commissioners spent a substantial amount of time over FY 2005-06 working on activities associated with updating the Commission's Strategic Plan. The Plan development includes reports on demographics, community indicators, community input, financial data, a fiscal leveraging report and a child/family services "system scan". The 2006 Strategic Plan Update is expected to be finalized by the end of 2006, supporting funding decisions that will be carried out in the Commission's next funding cycle (beginning July 1, 2007).

Part II

Solano County Commission Revenues and Expenditures Summary

**First 5 California Annual Report Form
Part 2
County Commission Revenues and Expenditures Summary
for the period July 1, 2005 - June 30, 2006**

Please type only in the yellow cells. The Word document titled "Part 2 Instructions" provides line-by-line information and instructions for filling out this spreadsheet. If you are viewing the spreadsheet on a computer, this information is also contained in "comment boxes," which are designated by a red triangle in the upper-right corner of each relevant cell. Simply position your mouse on the cell, and a yellow text box will appear to the right. If all comments are showing, go to View > Toolbars and check "Reviewing," then click the icon labeled "Hide all comments." To print this spreadsheet without the comments, go to File > Page Setup > Sheet and select "None" next to the "Comments" field, to hide the comments.

| | | |
|-------|--|-------------|
| 1.1 | State School Readiness Initiative Funds | \$221,002 |
| 1.1.1 | School Readiness Initiative - Program Funds | \$221,002 |
| 1.1.2 | School Readiness Initiative - Implementation Funds | \$0 |
| 1.2 | All Other First 5 Funds | \$5,070,316 |
| 1.2.1 | Monthly Disbursements | \$5,044,207 |
| 1.2.2 | Augmentation Funds: Administrative | \$0 |
| 1.2.3 | Augmentation Funds: Travel | \$0 |
| 1.2.4 | Augmentation Funds (Minimum \$200,000) | \$0 |
| 1.2.5 | Child Care Retention Incentives | \$0 |
| 1.2.6 | SMIF Funds | \$26,109 |
| 1.2.7 | Other First 5 Funds | \$0 |
| 1.3 | FY 2005-2006 Non-First 5 Funds (Revenues from Sources Other Than First 5 California) | \$769,912 |
| 1.3.1 | Grants | \$0 |
| 1.3.2 | Donations | \$0 |
| 1.3.3 | Revenues from Interest Earned | \$678,929 |
| 1.3.4 | Other | \$90,984 |
| 1.0 | FY 2005-2006 Total Revenues | \$6,061,230 |

| | | |
|-------|--|--------------|
| 1.0 | FY 2005-2006 Total Revenues | \$6,061,230 |
| 2.1 | FY 2004-2005 Year-End Fund Balance (uncommitted funds, including adjustment) | \$10,774,288 |
| 2.1.1 | FY 2004-2005 Year-End Fund Balance (uncommitted funds only) as reported in the 2004-2005 Annual Report | \$10,774,288 |
| 2.1.2 | Adjustment to FY 2004-2005 Year-End Fund Balance (uncommitted funds only) as reported in the 2004-2005 Annual Report | \$0 |
| | Please type an explanation for adjustment here. | |
| 2.2 | Net Committed Funds Brought Forward from Prior Years | \$8,680,108 |
| 2.2.1 | FY 2004-2005 Total Committed Funds as reported in the 2004-2005 Annual Report | \$10,297,279 |
| 2.2.2 | Adjustment to FY 2004-2005 Total Committed Funds as reported in the 2004-2005 Annual Report | \$0 |
| | Please type an explanation for adjustment here. | |
| 2.2.3 | FY 2005-2006 Reversal of Committed Funds from Prior Year | \$1,617,171 |
| 2.3 | FY 2005-2006 Funds Reversed from Committed to Uncommitted (reported in Line 2.2.3) | \$1,617,171 |
| 2.0 | Funds Available for FY 2005-2006 | \$27,132,797 |

Note: Figures on this form may differ from County Commission audit figures because of different reporting formats.

Page: 1 of 3

Solano County Commission Revenues and Expenditures Summary

| | State School Readiness Initiative Funds | All Other First 5 Funds (including First 5 funds used as a county match) | Non-First 5 Funds disbursed through the County Commission |
|---|---|--|---|
| 3.1 FY 2005-2006 Total Committed Funds | \$810,515 | \$5,557,242 | \$0 |
| 3.1.1 FY 2005-2006 Encumbrances | \$810,515 | \$5,557,242 | \$0 |
| 3.1.2 FY 2005-2006 Approved Contracts Not Yet Executed (Obligations) | \$0 | \$0 | \$0 |
| 3.1.3 FY 2005-2006 Restricted Funds Not Yet Obligated | \$0 | \$0 | \$0 |
| 3.1.4 Funds Invested in Capital Assets | \$0 | \$0 | \$0 |
| 3.1.5 Funds Reserved for First 5 California Initiatives | \$0 | \$0 | \$0 |
| 3.1.6 Funds Reserved for Local Initiatives and Program Sustainability | \$0 | \$0 | \$0 |

| | State School Readiness Initiative Funds | All Other First 5 Funds (including First 5 funds used as a county match) | Non-First 5 Funds disbursed through the County Commission |
|--|---|--|---|
| 4.1 FY 2005-2006 Program Expenditures | \$298,415 | \$3,549,203 | \$0 |
| 4.1.1 FY 2005-2006 Funds Disbursed to Externally Run Programs (Sum from Table 6) | \$298,415 | \$3,549,203 | \$0 |
| 4.1.2 FY 2005-2006 Funds Spent on Commission-Run Programs (Sum from Table 7) | \$0 | \$72,724 | \$0 |
| 4.2 FY 2005-2006 Administrative Expenditures | \$115,377 | \$1,234,814 | \$0 |
| 4.3 FY 2005-2006 Expenditures on County Commission Capital Investments | \$0 | \$0 | \$0 |
| 4.0 FY 2005-2006 Total Program, Administrative, and Capital Expenditures | \$413,792 | \$4,856,741 | \$0 |

| | |
|--|--------------|
| 2.0 Funds Available for FY 2005-2006 | \$27,132,797 |
| 3.1 FY 2005-2006 Total Committed Funds | \$6,367,757 |
| 4.0 FY 2005-2006 Total Program, Administrative, and Capital Expenditures | \$5,270,533 |
| 5.0 FY 2005-2006 Total Uncommitted Funds | \$15,494,507 |

| Program ID | Program Name | State School Readiness Initiative Funds | All Other First 5 Funds (including First 5 funds used as a county match) | Non-First 5 Funds disbursed through the County Commission |
|------------|--|---|--|---|
| 148001 | Children's Network: CARES | | \$54,465 | |
| 148002 | Child Start Inc. Head Start | | \$165,657 | |
| 148003 | Children's Network (IFSI 2) | | \$133,184 | |
| 148005 | VacaCART PD | | \$36,158 | |
| 148010 | Families First | | \$222,874 | |
| 148023 | Solano Coalition for Better Health | | \$214,563 | |
| 148024 | Dixon USD - Silverville | \$81,522 | \$81,522 | |
| 148025 | Fairfield-Suisun USD, Anna Kyle | \$71,861 | \$71,861 | |
| 148026 | Health and Social Services - Prenatal 1 | | \$671,752 | |
| 148027 | Vacaville USD - Markham | \$78,183 | \$78,183 | |
| 148028 | Vallejo City USD, Loma Vista | \$56,849 | \$56,849 | |
| 148029 | California Hispanic Commission | | \$132,970 | |
| 148030 | Everlasting Hope | | \$67,364 | |
| 148031 | Child Haven (IFSI) | | \$24,865 | |
| 148035 | Americorps | | \$107,650 | |
| 148039 | City of Benicia Parks and Community Services | | \$19,962 | |
| 148040 | Children's Network - ABCD Constructing Connections | | \$49,745 | |
| 148041 | Capital Grants | | \$0 | |
| 148042 | Benicia FRC - IFSI | | \$25,732 | |
| 148043 | Dixon Family Services - IFSI | | \$57,187 | |
| 148044 | Healthy Start FRC - IFSI | | \$139,836 | |
| 148045 | Interfaith - IFSI | | \$13,404 | |
| 148046 | Fighting Back Partnership - IFSI | | \$113,274 | |
| 148047 | Rio Vista FRC - IFSI | | \$43,816 | |
| 148048 | Children's Nurturing Project - Welcome Baby | | \$99,564 | |
| 148049 | Health and Social Services - EPSDT | | \$30,000 | |
| 148050 | Health and Social Services - Prenatal II | | \$296,913 | |
| 148051 | Health and Social Services - PHN & CPS | | \$150,000 | |
| 148052 | Children's Network - CARES 2 | | \$375,799 | |
| 148053 | Children's Nurturing Project - Parent Education | | \$5,055 | |

Note: Figures on this form may differ from County Commission audit figures because of different reporting formats.

Page: 2 of 3

Solano County Commission Revenues and Expenditures Summary

Table 7. FY 2005-2006 Program Expenditures Detail: Commission-Run Programs

Commission-Run Program: An activity or set of activities funded by First 5 dollars and administered directly by County Commission staff (i.e., not by an outside agency). For example, a County Commission may disburse provider stipends or incentives, or hold community events. To add a program to the table, please contact your technical assistance coach or send an email to first5sr@sri.com. Please report mini-grants here.

| Program ID | Program Name | State School Readiness Initiative Funds | All Other First 5 Funds (including First 5 funds used as a county match) | Non-First 5 Funds disbursed through the County Commission |
|------------|-------------------------|---|--|---|
| 248027 | Community Education | | \$4,305 | |
| 248030 | Co-Sponsorship | | \$7,475 | |
| 248031 | Grant Writing | | \$15,000 | |
| 248032 | Grantee Trainings | | \$22,150 | |
| 248033 | Neighborhood Investment | | \$3,400 | |
| 248034 | Preschool for All | | \$20,394 | |

Additional Fiscal Information

Please use this space to document any issues with the information provided on this spreadsheet. Thank you!

Leveraged Funds Report Fiscal Year (FY) 2005/06

Introduction

In an effort to maximize the amount of funding that is available for services in Solano County, many grantees utilize First 5 funding to “leverage”, or bring in funds, from other sources. ***Agencies funded by First 5 Solano reported \$4,000,920 in additional, or leveraged, dollars accessed at least in part because of First 5 funding.***

The various sources and amounts of funding available to expand services are directly dependant upon the types of services that each program provides and the clients served⁴. In addition, leveraged funds may not be specifically restricted to the 0-5 age group and may be utilized by program planners and practitioners to expand the larger children and family service system, such as services to 6-18 year olds or adults without children aged 0-5.

Types of Funding Leveraged by First 5 Solano Grantees

Following is a summary of highlights of leveraged funding:

- *Family Support Grants (IFS)*--Under the leadership of the Children’s Network of Solano County, which provides coordination, common data and assessment tools and other support, each Family Resource Center utilizes First 5 Solano funds as a match for Solano County Preserving Safe and Stable Families (PSSF) funding. These funds provide services to families that have children ages 6-18.

Along with PSSF funding, most FRC agencies have been able to attract other grants and funding specific to the needs of the targeted population.

The Solano County Child Protective Services Social Worker and the Public Health component of the Integrated Family Support Initiative (IFS) bring in nearly a 50% match from Federal sources to fully fund these services. Through the direction of First 5 Solano staff, the Interfaith Council of Solano County (Heather House) has just began exploring various potential options of leveraging First 5 Solano funding in order to enhance and/or expand their capacities.

- *Early Childhood Mental Health Services*--The various service providers the have been awarded First 5 Solano funding to provide mental health services have been able to leverage substantial amounts of funding from outside sources as a result of First 5 Solano funding.

The Children’s Nurturing Project has acquired funding that allows for services into the cities that are outside of the First 5 Solano School Readiness catchment areas.

⁴ For example, Medi-Cal Administrative Activities – MAA – funding may only be leveraged if working with Medi-Cal eligible clients in Medi-Cal enrollment activities)

Leveraged Funds Report

Child Start Inc. has used its First 5 Solano funding to secure nearly \$800,000⁵ in Federal funding for the Head Start program.

Solano County Health & Social Services (H&SS) used \$30,000 in First 5 funds earmarked for the Early Period Screening, Diagnosis and treatment (EPSDT) program to draw down a 95% match (over \$600,000) in Federal mental health funding for Medi-Cal eligible children⁶.

- *BabyFirst Solano (Prenatal Services Initiative)*--Under the leadership and coordination of Solano County Health and Social Services Department, the BabyFirst Solano initiative has captured nearly \$400,000 in leveraged state and federal funding primarily from Maternal, Child Adolescent Health funding avenues. Although the substance abuse component of BabyFirst only recently began operation, this component of the Prenatal Initiative was able bring approximately \$75,000 in services.
- *School Readiness Initiative*--Through the funding design of First 5 California, each School Readiness site leverages a 1:1 match (\$376,157) for each program's total funding through the First 5 California School Readiness programs⁷.
- *Children's Health Initiative*--Partnership HealthPlan has been successful in leveraging substantial funding from multiple public and private sources to support Healthy Kids premiums for the Children's Health Initiative (CHI). The First 5 California match alone is up to \$132,000 annually with up to \$61,490 in available matching funds (based on the program's actual expenditures) for FY2005/06.
- *Other Grants*--25% of the funding (\$32,984 in FY2005/06) for the Comprehensive Approaches to Raising Educational Standards (CARES) program, managed by the Children's Network, was leveraged in the form of First 5 California matching funds.

Another Children's Network program "Constructing Connections" (a child care facilities system development effort) is based on a grant from the Low Income Investment Fund and First 5 California, with First 5 Solano funds of \$43,000 contributing to that program budget.

Conclusion

First 5 Solano's relatively flexible funding is an ideal source of matching dollars for a variety of local, state, federal and public/private foundation funding streams. These leveraged dollars are almost equal to the annual First 5 grant budget, demonstrating an impressive level of motivation, commitment and diligence among the grantee organizations (community service providers and public entities) funded by First 5 Solano. The Commission's overarching goal of system change, and its funding priority of seeking ways to "grow" its dollars through investments that generate matching funds, was well-served in FY2005/06. First 5 Solano should track this aspect of its investments and seek to continue to support grantees in finding new opportunities to leverage First 5 funding to benefit Solano County's children and family service system.

⁵ This amount includes funding for full-day Head Start spaces as well as mental health services.

⁶ \$70,000 is budgeted for FY2006/07, which is expected to generate an additional \$1,330,000 in services dollars if the match is fully utilized.

⁷ In addition, the 4 Americorps members funded by First 5 Solano generate \$8,000 each for a total of \$32,000 in FY2005/06. This amount is not listed in the attached table.

Leveraged Fund Report – Fiscal Year 2005-2006

| Grantee | First 5 Funds Budgeted | First 5 Funds Expended | Leveragable Services | Source of Leveraged Funds | Leveraged Funds |
|---|-------------------------------|-------------------------------|--|---|------------------------|
| Family Support Grants | | | | | |
| Rio Vista CARE | 44,000 | 43,816.41 | Basic needs financial assistance, Parent education, information and referral, and home visiting services | Preserving Safe & Stable Families (PSSF), Health and Social Services (H&SS)/ Child Welfare Services (CWS) | 46,000 |
| Vacaville Police Dept | 38,765 | 36,157.82 | Basic needs financial assistance, Parent education, information and referral, and home visiting services | PSSF, City of Vacaville | 30,000 |
| Fairfield-Suisun USD | 139,210 | 138,836.27 | Basic needs financial assistance, Parent education, information and referral, and home visiting services | PSSF, McKinney Homeless grant | 160,790 |
| Children's Network | 129,329 | 129,328.56 | Parenting Partnership and ChildNet Results Manager (MAA) Family Resource Centers (FRC) services (PSSF) | Medi-Cal Administrative Activities (MAA), County General Funds | 187,000 |
| Fighting Back Partnership | 130,000 | 113,273.80 | Basic needs financial assistance, Parent education, information and referral, and home visiting services | PSSF, County General Funds | 18,395 |
| Dixon Family Services | 57,187 | 57,187.00 | Basic needs financial assistance, Parent education, information and referral, and home visiting services | H&SS/Substance Abuse Services, School Readiness (SR), PSSF | 15,000 |
| Health & Social Services Public Health Nurse & Child Protective Services SW | 150,000 | 150,000.00 | Home visiting for high risk families | Federal Matching Funds | 111,885 |

Leveraged Fund Report – Fiscal Year 2005-2006

| Grantee | First 5 Funds Budgeted | First 5 Funds Expended | Leveragable Services | Source of Leveraged Funds | Leveraged Funds |
|---|-------------------------------|-------------------------------|--|--|----------------------------------|
| Early Childhood Mental Health Grants | | | | | |
| Children's Nurturing Project | 99,564 | 99,564.00 | Early Childhood Mental Health screenings and follow-ups | California Endowment, Children's Trust Fund, City of Fairfield, Community Development Block Grant (CDBG) | 74,000 |
| Child Start - Head Start | 165,657 | 165,656.85 | Wrap around child care and mental health services for Head Start children | Federal Head Start Program | 800,000 |
| Solano County H&SS EPSDT | 30,000 | 30,000.00 | Mental health services | (Federal) Medi-Cal/EPSDT | 570,000 600,000 |
| Prenatal Grants | | | | | |
| HSS - AFLP & BIH | 670,988 | 670,988.00 | Prenatal Health Services | Maternal, Child & Adolescent Health (MCAH) (Fed/St) | 311,745 |
| HSS - Prenatal II | 406,353 | 296,912.34 | Prenatal Health Services | MCAH Fed/St | 75,000 |
| School Readiness Grants | | | | | |
| Anna Kyle Elementary | 222,831 | 143,722.45 | Neighborhood-based school readiness services, pre-Kindergarten academy, health and parent services | First 5 California | 71,861 |
| Loma Vista Elementary | 218,200 | 125,355.18 | | First 5 California, S.H. Cowell Foundation | 162,678 |
| Markham Elementary | 210,000 | 174,123.68 | | First 5 California | 87,062 |
| Silveyville Primary | 217,250 | 163,043.74 | | First 5 California | 81,522 |
| Grantee | First 5 Funds Budgeted | First 5 Funds Expended | Leveragable Services | Source of Leveraged Funds | Leveraged Funds |

Leveraged Fund Report – Fiscal Year 2005-2006

| Other Grants | | | | | |
|---|-----------|------------|---|---|------------------|
| Children's Network - CARES II | 158,268 | 58,042.40 | Child care outreach and stipends | First 5 California | 14,511 |
| | 583,155 | 375,798.77 | Child care outreach and stipends | First 5 California | 116,631 |
| Children's Network - "Constructing Connections" | 53,500 | 55,312.21 | Child care facilities system development | Low Income Investment Fund (LIIF) | 61,000 |
| Solano Coalition for Better Health-SKIP | 291,490 | 214,562.56 | Universal Regional Children's Health Initiative | First 5 CA, Blue Shield, California Endowment | 405,841 |
| Totals: | 4,015,747 | 3,241,682 | | | 4,000,921 |

* This amount may be duplicated as some Family Resource Center agencies reported funds leveraged from H&SS individually



Performance Measures

Fiscal Year: 2005/2006

| Quarter | Goal | Actual | Variance | Achieved | Approved |
|---------|------|--------|----------|----------|----------|
|---------|------|--------|----------|----------|----------|

| | | | | | |
|---|--|--|--|--|--|
| Program Title: ABCD Constructing Connections | | | | | |
| Agency: Childrens Network | | | | | |
| Contract #: 2005-501 | Contract From / To: 07/01/2005 06/30/2006 | | | | |

1 City Planning Department will integrate child care facilities development into land use planning, community development

2Q-05/06

5 interested parties will receive technical assistance in creating child care facilities

| | | | | | |
|---------------|----------|-----------|----------|--|--|
| 2Q-05/06 | 5 | 12 | 7 | | |
| Total: | 5 | 12 | 7 | | |

Financial resources will be published and made available via online and paper access to parties interested in creating new child

2Q-06/07 Achieved

Identification of 4 local and/or statewide financial programs for child care expansion

| | | | | | |
|---------------|----------|----------|----------|--|----------|
| 1Q-05/06 | 4 | 6 | 2 | | Approved |
| Total: | 4 | 6 | 2 | | |

Release of Child Care Economic Impact Report

1Q-05/06 Achieved Approved

Solano Transportation Improvement Agency will incorporate child care into its transportation planning processes

2Q-06/07 Achieved

| Quarter | Goal | Actual | Variance | Achieved | Approved |
|---------|------|--------|----------|----------|----------|
|---------|------|--------|----------|----------|----------|

Program Title: BabyFirst Solano (African-American & Teens)

Agency: Solano County Health and Social Services

Contract #: 2003-303

Contract From / To: 07/01/2005 06/30/2006

AFLP - 40% (12) participants will enter prenatal care in the first trimester

| | | | |
|---------------|----|-----|-----|
| 1Q-05/06 | 3 | 42 | 39 |
| 2Q-05/06 | 3 | 28 | 25 |
| 3Q-05/06 | 3 | 25 | 22 |
| 4Q-05/06 | 3 | 21 | 18 |
| Total: | 12 | 116 | 104 |

AFLP - 50% (15) of participants will attend 60% of scheduled pre-natal appointments

| | | | |
|---------------|----|-----|-----|
| 1Q-05/06 | 3 | 52 | 49 |
| 2Q-05/06 | 4 | 23 | 19 |
| 3Q-05/06 | 4 | 32 | 28 |
| 4Q-05/06 | 4 | 16 | 12 |
| Total: | 15 | 123 | 108 |

AFLP - 50% women will have babies at >37 week gestation period and/or at 2500 grams

| | | | |
|---------------|----|-----|----|
| 1Q-05/06 | 20 | 36 | 16 |
| 2Q-05/06 | 14 | 27 | 13 |
| 3Q-05/06 | 46 | 59 | 13 |
| 4Q-05/06 | 0 | 15 | 15 |
| Total: | 80 | 137 | 57 |

BIH - 50% (25) of participants' partners will enroll in program services and attend all six Role of Men classes

| | | | |
|---------------|----|----|----|
| 1Q-05/06 | 6 | 8 | 2 |
| 2Q-05/06 | 6 | 7 | 1 |
| 3Q-05/06 | 6 | 10 | 4 |
| 4Q-05/06 | 7 | 17 | 10 |
| Total: | 25 | 42 | 17 |

BIH - 60% (33) of babies born to participating women will weigh at least 5 pounds (2500 g) at birth, and will be born at 37 weeks'

| | | | |
|---------------|----|----|----|
| 1Q-05/06 | 8 | 24 | 16 |
| 2Q-05/06 | 8 | 10 | 2 |
| 3Q-05/06 | 8 | 8 | |
| 4Q-05/06 | 9 | 16 | 7 |
| Total: | 33 | 58 | 25 |

BIH - 75% (25) of participating women will attend at least 60% of their scheduled prenatal appointments

| | | | |
|---------------|----|-----|----|
| 1Q-05/06 | 6 | 53 | 47 |
| 2Q-05/06 | 6 | 28 | 22 |
| 3Q-05/06 | 6 | 16 | 10 |
| 4Q-05/06 | 7 | 17 | 10 |
| Total: | 25 | 114 | 89 |

H&SS - 2 new collaborating partners will become a member of the collaborative

| | | | |
|---------------|---|---|---|
| 1Q-05/06 | 0 | 0 | |
| 2Q-05/06 | 0 | 0 | |
| 3Q-05/06 | 0 | 0 | |
| 4Q-05/06 | 2 | 2 | |
| Total: | 2 | 2 | 0 |

| Quarter | Goal | Actual | Variance | Achieved | Approved |
|---------|------|--------|----------|----------|----------|
|---------|------|--------|----------|----------|----------|

H&SS - Collaborating partners will utilize coordinated referral and outreach system and tools

| | | | | | |
|----------|--|--|--|----------|--|
| 1Q-05/06 | | | | Achieved | |
|----------|--|--|--|----------|--|

| Quarter | Goal | Actual | Variance | Achieved | Approved |
|---------|------|--------|----------|----------|----------|
|---------|------|--------|----------|----------|----------|

Program Title: Early Childhood Mental Health

Agency: Families First

Contract #: 2005-103

Contract From / To: 07/01/2005 06/30/2006

70% (32) families served will increase their parenting skills and bonding with their children

| | | | | |
|---------------|----|----|----|--|
| 1Q-05/06 | 0 | 0 | | |
| 2Q-05/06 | 10 | 11 | 1 | |
| 3Q-05/06 | 11 | 17 | 6 | |
| 4Q-05/06 | 11 | 20 | 9 | |
| Total: | 32 | 48 | 16 | |

70% (32) of children treated will increase their level of social and emotional behavior

| | | | | |
|---------------|----|----|----|--|
| 1Q-05/06 | 0 | 0 | | |
| 2Q-05/06 | 10 | 13 | 3 | |
| 3Q-05/06 | 11 | 15 | 4 | |
| 4Q-05/06 | 11 | 20 | 9 | |
| Total: | 32 | 48 | 16 | |

70% (32) of families served will access at least one additional community resource

| | | | | |
|---------------|----|----|----|--|
| 1Q-05/06 | 0 | 0 | | |
| 2Q-05/06 | 10 | 7 | -3 | |
| 3Q-05/06 | 11 | 14 | 3 | |
| 4Q-05/06 | 11 | 17 | 6 | |
| Total: | 32 | 38 | 6 | |

| Quarter | Goal | Actual | Variance | Achieved | Approved |
|---------|------|--------|----------|----------|----------|
|---------|------|--------|----------|----------|----------|

Program Title: EPSDT Services
Agency: Solano County Health and Social Services
Contract #: 2005-304 **Contract From / To:** 07/01/2005 06/30/2006

100% of families terminating services receive support linkages

| | | | | |
|---------------|-----------|-----------|----------|--|
| | 61 | 61 | | |
| 1Q-05/06 | 7 | 7 | | |
| Total: | 68 | 68 | 0 | |

75% of children (0-18 months) will show an increase of a minimum of 10 points on the Parent-Infant Relationship Global

| | | | | |
|---------------|----------|----------|----------|--|
| 1Q-05/06 | 0 | 0 | | |
| 2Q-05/06 | 0 | 0 | | |
| 3Q-05/06 | 0 | 0 | | |
| 4Q-05/06 | 0 | 0 | | |
| Total: | 0 | 0 | 0 | |

75% of children (10-60 months) will show an increase of a minimum of 1 point on the Children's Global Assessment Scale

| | | | | |
|---------------|----------|----------|----------|--|
| 1Q-05/06 | 0 | 0 | | |
| 2Q-05/06 | 0 | 0 | | |
| 3Q-05/06 | 0 | 0 | | |
| 4Q-05/06 | 0 | 0 | | |
| Total: | 0 | 0 | 0 | |

75% of children receiving services is will demonstrate an increase based on appropriate assessment tools

| | | | | |
|---------------|-----------|-----------|-----------|--|
| 1Q-05/06 | 51 | 62 | 11 | |
| Total: | 51 | 62 | 11 | |

| Quarter | Goal | Actual | Variance | Achieved | Approved |
|---------|------|--------|----------|----------|----------|
|---------|------|--------|----------|----------|----------|

Program Title: Head Start Mental Health & Full Day

Agency: Child Start

Contract #: 2005-102

Contract From / To: 07/01/2005 06/30/2006

25% (32) of 4-year olds will demonstrate that they are in the process of language acquisition, development, literacy and math

| | | | |
|---------------|-----------|-----------|-----------|
| 1Q-05/06 | 0 | 0 | |
| 2Q-05/06 | 10 | 27 | 17 |
| 3Q-05/06 | 10 | 23 | 13 |
| 4Q-05/06 | 12 | 32 | 20 |
| Total: | 32 | 82 | 50 |

75% (38) of children enrolled will show growth in the social/emotional component of Head Start Assessment Tool

| | | | |
|---------------|-----------|------------|-----------|
| 1Q-05/06 | 7 | 30 | 23 |
| 2Q-05/06 | 0 | 0 | |
| 3Q-05/06 | 14 | 27 | 13 |
| 4Q-05/06 | 9 | 45 | 36 |
| Total: | 30 | 102 | 72 |

90% (27) children identified will have action plans completed and show increased competency in their social/emotional development

| | | | |
|---------------|-----------|-----------|----------|
| 1Q-05/06 | 0 | 0 | |
| 2Q-05/06 | 0 | 0 | |
| 3Q-05/06 | 12 | 12 | |
| 4Q-05/06 | 15 | 15 | |
| Total: | 27 | 27 | 0 |

| Quarter | Goal | Actual | Variance | Achieved | Approved |
|---------|------|--------|----------|----------|----------|
|---------|------|--------|----------|----------|----------|

Program Title: IFSI - Benicia FRC
Agency: City of Benicia/Police Dept.
Contract #: 2005-202 **Contract From / To:** 07/01/2005 06/30/2006

25% (11) of families will report increased awareness of the effects of exposure to violence on children

| | | | | |
|---------------|----|----|----|-----------------|
| 1Q-05/06 | 2 | 5 | 3 | Approved |
| 2Q-05/06 | 2 | 14 | 12 | |
| 3Q-05/06 | 3 | 5 | 2 | |
| 4Q-05/06 | 4 | 6 | 2 | |
| Total: | 11 | 30 | 19 | |

50% (6) of parents will report sufficient knowledge and skills to improve family functioning

| | | | | |
|---------------|----|----|----|-----------------|
| 1Q-05/06 | 7 | 25 | 18 | Approved |
| 2Q-05/06 | 6 | 10 | 4 | |
| 3Q-05/06 | 6 | 12 | 6 | |
| 4Q-05/06 | 6 | 15 | 9 | |
| Total: | 25 | 62 | 37 | |

50% (25) of families will report an increase in knowledge and access to community services

| | | | | |
|---------------|----|----|----|-----------------|
| 1Q-05/06 | 7 | 21 | 14 | Approved |
| 2Q-05/06 | 6 | 14 | 8 | |
| 3Q-05/06 | 6 | 4 | -2 | |
| 4Q-05/06 | 6 | 12 | 6 | |
| Total: | 25 | 51 | 26 | |

75% (2) of pregnant and parenting teens will indicate an increase awareness of services available to them

| | | | | |
|---------------|---|---|----|-----------------|
| 1Q-05/06 | 1 | 0 | -1 | Approved |
| 2Q-05/06 | 0 | 0 | | |
| 3Q-05/06 | 0 | 0 | | |
| 4Q-05/06 | 1 | 2 | 1 | |
| Total: | 2 | 2 | 0 | |

| Quarter | Goal | Actual | Variance | Achieved | Approved |
|---------|------|--------|----------|----------|----------|
|---------|------|--------|----------|----------|----------|

Program Title: IFSI - Child Haven
Agency: Child Haven
Contract #: 2005-210 **Contract From / To:** 07/01/2005 06/30/2006

70% (14) of parents will report an increase in knowledge of child abuse prevention strategies

| | | | | |
|---------------|----|----|----|----------|
| 1Q-05/06 | 7 | 9 | 2 | Approved |
| 2Q-05/06 | 0 | 9 | 9 | |
| 3Q-05/06 | 7 | 9 | 2 | |
| 4Q-05/06 | 0 | 0 | | |
| Total: | 14 | 27 | 13 | |

70% (14) of parents will report an oncrease on knowledge of parenting skills

| | | | | |
|---------------|----|----|----|----------|
| 1Q-05/06 | 7 | 9 | 2 | Approved |
| 2Q-05/06 | 0 | 9 | 9 | |
| 3Q-05/06 | 7 | 9 | 2 | |
| 4Q-05/06 | 0 | 0 | | |
| Total: | 14 | 27 | 13 | |

70% (7) of families will report an increase in knowledge of and access to community resources

| | | | | |
|---------------|---|----|----|----------|
| 1Q-05/06 | 2 | 9 | 7 | Approved |
| 2Q-05/06 | 2 | 9 | 7 | |
| 3Q-05/06 | 2 | 9 | 7 | |
| 4Q-05/06 | 1 | 0 | -1 | |
| Total: | 7 | 27 | 20 | |

| Quarter | Goal | Actual | Variance | Achieved | Approved |
|---------|------|--------|----------|----------|----------|
|---------|------|--------|----------|----------|----------|

Program Title: IFSI - Childrens Network
Agency: Childrens Network
Contract #: 2005-205 **Contract From / To:** 07/01/2005 06/30/2006

50% (10) of the cohort of parenting education providers will implement a research-based parenting program within one year of

| | | | | | |
|---------------|-----------|-----------|----------|--|--|
| 1Q-05/06 | 10 | 10 | | | |
| Total: | 10 | 10 | 0 | | |

50% of providers will report that the Parenting Database increases their ability to make appropriate parenting referrals

| | | | | | |
|---------------|-----------|-----------|--|-----------|--|
| 1Q-05/06 | | | | 36 | |
| Total: | 50 | 86 | | 36 | |

Collaborative partners will utilize standardized forms for permissions, referrals, and family service plans for all participating agencies

| | | | | | |
|----------|--|--|--|----------|--|
| 1Q-05/06 | | | | N/A | |
| 2Q-05/06 | | | | Achieved | |

CPS and PHN staff and administration will participate in quarterly meetings

| | | | | | |
|----------|--|--|--|----------|--|
| 1Q-05/06 | | | | Achieved | |
| 2Q-05/06 | | | | Achieved | |
| 3Q-05/06 | | | | Achieved | |
| 4Q-05/06 | | | | | |

Establish and maintain MOUs assuring that confidentiality agreements among collaborating partners are in place

| | | | | | |
|----------|--|--|--|----------|--|
| 1Q-05/06 | | | | N/A | |
| 2Q-05/06 | | | | Achieved | |

Project Coordinator will participate in Baby First and Differential Response meetings as appropriate

| | | | | | |
|----------|--|--|--|----------|--|
| 1Q-05/06 | | | | Achieved | |
| 2Q-05/06 | | | | Achieved | |
| 3Q-05/06 | | | | | |
| 4Q-05/06 | | | | | |

| Quarter | Goal | Actual | Variance | Achieved | Approved |
|---------|------|--------|----------|----------|----------|
|---------|------|--------|----------|----------|----------|

Program Title: IFSI - Dixon FRC
Agency: Dixon Family Services
Contract #: 2005-208 **Contract From / To:** 07/01/2005 06/30/2006

30% (60) of families who are assessed and receive information and referral services will show an increase on at least one scale of

| | | | | |
|---------------|----|----|----|----------|
| 1Q-05/06 | 4 | 14 | 10 | Approved |
| 2Q-05/06 | 4 | 23 | 19 | |
| 3Q-05/06 | 5 | 5 | | |
| 4Q-05/06 | 5 | 5 | | |
| Total: | 18 | 47 | 29 | |

50% (100) of families receiving information and referrals services will report an increased knowledge & access to community

| | | | | |
|---------------|-----|-----|-----|----------|
| 1Q-05/06 | 25 | 238 | 213 | Approved |
| 2Q-05/06 | 25 | 36 | 11 | |
| 3Q-05/06 | 25 | 188 | 163 | |
| 4Q-05/06 | 25 | 203 | 178 | |
| Total: | 100 | 665 | 565 | |

| Quarter | Goal | Actual | Variance | Achieved | Approved |
|---------|------|--------|----------|----------|----------|
|---------|------|--------|----------|----------|----------|

Program Title: IFSI - Fairfield/SuisunFRC
Agency: Fairfield-Suisun Unified School District
Contract #: 2005-204 **Contract From / To:** 07/01/2005 06/30/2006

50% (125) families will report an increase in knowledge & access to community resources and decreased isolation

| | | | | | |
|---------------|-----|-----|----|--|--|
| 1Q-05/06 | 32 | 30 | -2 | | |
| 2Q-05/06 | 31 | 48 | 17 | | |
| 3Q-05/06 | 31 | 68 | 37 | | |
| 4Q-05/06 | 31 | 72 | 41 | | |
| Total: | 125 | 218 | 93 | | |

50% (18) families will become involved in activities related to their child's development

| | | | | | |
|---------------|----|----|----|--|--|
| 1Q-05/06 | 0 | 0 | | | |
| 2Q-05/06 | 0 | 0 | | | |
| 3Q-05/06 | 9 | 0 | -9 | | |
| 4Q-05/06 | 9 | 21 | 12 | | |
| Total: | 18 | 21 | 3 | | |

50% (62) parents will report sufficient knowledge and skills to improve family functioning

| | | | | | |
|---------------|----|----|----|--|--|
| 1Q-05/06 | 15 | 20 | 5 | | |
| 2Q-05/06 | 15 | 20 | 5 | | |
| 3Q-05/06 | 16 | 16 | | | |
| 4Q-05/06 | 16 | 21 | 5 | | |
| Total: | 62 | 77 | 15 | | |

75% (15) of all families attending classes will show increased knowledge of parenting skills

| | | | | | |
|---------------|----|-----|----|--|--|
| 1Q-05/06 | 0 | 0 | | | |
| 2Q-05/06 | 7 | 50 | 43 | | |
| 3Q-05/06 | 0 | 50 | 50 | | |
| 4Q-05/06 | 8 | 0 | -8 | | |
| Total: | 15 | 100 | 85 | | |

| Quarter | Goal | Actual | Variance | Achieved | Approved |
|---------|------|--------|----------|----------|----------|
|---------|------|--------|----------|----------|----------|

Program Title: IFSI - Heather House
Agency: Interfaith Council of Solano County
Contract #: 2005-206 **Contract From / To:** 07/01/2005 06/30/2006

50% (10) families will move from In-Crisis to Stable for 90 days in the Housing Component

| | | | | | |
|---------------|----|---|----|--|----------|
| 1Q-05/06 | 2 | 1 | -1 | | Approved |
| 2Q-05/06 | 2 | 5 | 3 | | |
| 3Q-05/06 | 2 | 0 | -2 | | |
| 4Q-05/06 | 4 | 0 | -4 | | |
| Total: | 10 | 6 | -4 | | |

50% (10) families will move to Stable on the Social/Emotional Health and Competence Component

| | | | | | |
|---------------|----|----|----|--|----------|
| 1Q-05/06 | 2 | 8 | 6 | | Approved |
| 2Q-05/06 | 2 | 5 | 3 | | |
| 3Q-05/06 | 2 | 0 | -2 | | |
| 4Q-05/06 | 4 | 0 | -4 | | |
| Total: | 10 | 13 | 3 | | |

50% (2) participant children will increase socialization and interaction skills as well as improvement in development milestones

| | | | | | |
|---------------|---|---|----|--|----------|
| 1Q-05/06 | 0 | 0 | | | Approved |
| 2Q-05/06 | 0 | 0 | | | |
| 3Q-05/06 | 0 | 0 | | | |
| 4Q-05/06 | 2 | 0 | -2 | | |
| Total: | 2 | 0 | -2 | | |

| Quarter | Goal | Actual | Variance | Achieved | Approved |
|---------|------|--------|----------|----------|----------|
|---------|------|--------|----------|----------|----------|

Program Title: IFSI - Loma Vista FRC
Agency: Fighting Back Partnership
Contract #: 2005-207 **Contract From / To:** 07/01/2005 06/30/2006

20% (4) of families services through case conferencing will show an increase in movement toward the "Stability" scale

| | | | | |
|---------------|---|----|----|----------|
| 1Q-05/06 | 1 | 7 | 6 | Approved |
| 2Q-05/06 | 1 | 5 | 4 | |
| 3Q-05/06 | 1 | 2 | 1 | |
| 4Q-05/06 | 1 | 3 | 2 | |
| Total: | 4 | 17 | 13 | |

50% (50) of families receiving information and referral services will show an increase in one scale accessing community resources

| | | | | |
|---------------|----|-----|-----|----------|
| 1Q-05/06 | 12 | 42 | 30 | Approved |
| 2Q-05/06 | 12 | 53 | 41 | |
| 3Q-05/06 | 13 | 48 | 35 | |
| 4Q-05/06 | 13 | 51 | 38 | |
| Total: | 50 | 194 | 144 | |

60% (18) of families will report and increase in movement in at least one scale domain

| | | | | |
|---------------|----|----|----|----------|
| 1Q-05/06 | 4 | 10 | 6 | Approved |
| 2Q-05/06 | 4 | 21 | 17 | |
| 3Q-05/06 | 5 | 10 | 5 | |
| 4Q-05/06 | 5 | 9 | 4 | |
| Total: | 18 | 50 | 32 | |

| Quarter | Goal | Actual | Variance | Achieved | Approved |
|---------|------|--------|----------|----------|----------|
|---------|------|--------|----------|----------|----------|

Program Title: IFSI - PHN & CPS
Agency: Solano County Health and Social Services
Contract #: 2005-211 **Contract From / To:** 07/01/2005 06/30/2006

30% of families will accept services through the initiative

| | | | | | |
|---------------|----|-----|----|--|--|
| 1Q-05/06 | 12 | 25 | 13 | | |
| 2Q-05/06 | 25 | 36 | 11 | | |
| 3Q-05/06 | 13 | 13 | | | |
| 4Q-05/06 | 13 | 65 | 52 | | |
| Total: | 63 | 139 | 76 | | |

50% of children will remain in their home with family/care providers

| | | | | | |
|---------------|----|-----|-----|--|--|
| 1Q-05/06 | 42 | 79 | 37 | | |
| 2Q-05/06 | 53 | 100 | 47 | | |
| 3Q-05/06 | 0 | 0 | | | |
| 4Q-05/06 | 0 | 45 | 45 | | |
| Total: | 95 | 224 | 129 | | |

50% of children with medical issues will improve health status by receiving treatment for presenting problems

| | | | | | |
|---------------|-----|-----|---|--|--|
| 1Q-05/06 | | | | | |
| 2Q-05/06 | | | | | |
| 3Q-05/06 | | | | | |
| 4Q-05/06 | | | | | |
| Total: | 200 | 200 | 0 | | |

50% of parents will report and increased knowledge of and access to ongoing and/or specialized health care services

| | | | | | |
|---------------|----|-----|----|--|--|
| 1Q-05/06 | 25 | 47 | 22 | | |
| 2Q-05/06 | 22 | 35 | 13 | | |
| 3Q-05/06 | 0 | 0 | | | |
| 4Q-05/06 | 0 | 50 | 50 | | |
| Total: | 47 | 132 | 85 | | |

| Quarter | Goal | Actual | Variance | Achieved | Approved |
|---------|------|--------|----------|----------|----------|
|---------|------|--------|----------|----------|----------|

Program Title: IFSI - Rio Vista FRC
Agency: Rio Vista CARE
Contract #: 2005-201 **Contract From / To:** 07/01/2005 06/30/2006

50% (10) of families will report an increase in knowledge of and access to community resources

| | | | | | |
|---------------|----|----|----|--|-----------------|
| 1Q-05/06 | 2 | 12 | 10 | | Approved |
| 2Q-05/06 | 2 | 18 | 16 | | |
| 3Q-05/06 | 3 | 3 | | | |
| 4Q-05/06 | 3 | 5 | 2 | | |
| Total: | 10 | 38 | 28 | | |

70% (10) of families will report an ability to better meet their basic needs

| | | | | | |
|---------------|----|----|----|--|-----------------|
| 1Q-05/06 | 12 | 20 | 8 | | Approved |
| 2Q-05/06 | 3 | 3 | | | |
| 3Q-05/06 | 7 | 7 | | | |
| 4Q-05/06 | 3 | 7 | 4 | | |
| Total: | 25 | 37 | 12 | | |

70% (7) of families will report an increase in knowledge or parenting skills

| | | | | | |
|---------------|----|----|---|--|-----------------|
| 1Q-05/06 | 0 | 0 | | | Approved |
| 2Q-05/06 | 0 | 0 | | | |
| 3Q-05/06 | 7 | 8 | 1 | | |
| 4Q-05/06 | 22 | 22 | | | |
| Total: | 29 | 30 | 1 | | |

| Quarter | Goal | Actual | Variance | Achieved | Approved |
|---------|------|--------|----------|----------|----------|
|---------|------|--------|----------|----------|----------|

Program Title: IFSI - Vacaville FRC
Agency: Vacaville Police Department
Contract #: 2005-203 **Contract From / To:** 07/01/2005 06/30/2006

50 % (100) of families will achieve a score of 3 or higher in the category of Social Emotional Health

| | | | | | |
|---------------|-----|-----|----|--|----------|
| 1Q-05/06 | 17 | 17 | | | Approved |
| 2Q-05/06 | 15 | 15 | | | |
| 3Q-05/06 | 48 | 47 | -1 | | |
| 4Q-05/06 | 33 | 33 | | | |
| Total: | 113 | 112 | -1 | | |

50% (100) of families the received home visting services will score a 3 or higher on their post Matrix evaluation

| | | | | | |
|---------------|----|----|----|--|----------|
| 1Q-05/06 | 7 | 7 | | | Approved |
| 2Q-05/06 | 7 | 7 | | | |
| 3Q-05/06 | 2 | 2 | | | |
| 4Q-05/06 | 18 | 17 | -1 | | |
| Total: | 34 | 33 | -1 | | |

50% (17) of families receiving group based services will achieve a Sten score between 4 and 7 on the majority of Parenting

| | | | | | |
|---------------|----|----|----|--|----------|
| 1Q-05/06 | 0 | 0 | | | Approved |
| 2Q-05/06 | 6 | 7 | 1 | | |
| 3Q-05/06 | 0 | 7 | 7 | | |
| 4Q-05/06 | 21 | 20 | -1 | | |
| Total: | 27 | 34 | 7 | | |

| Quarter | Goal | Actual | Variance | Achieved | Approved |
|---------|------|--------|----------|----------|----------|
|---------|------|--------|----------|----------|----------|

Program Title: Its All About My Baby

Agency: California Hispanic Commission

Contract #: 2003-301

Contract From / To: 07/01/2005 06/30/2006

30 participant's babies have a medical home

| | | | |
|---------------|-----------|-----------|-----------|
| 1Q-05/06 | 14 | 14 | |
| 2Q-05/06 | 0 | 0 | |
| 3Q-05/06 | 8 | 8 | |
| 4Q-05/06 | 8 | 5 | -3 |
| Total: | 30 | 27 | -3 |

30 participants will attend 75% of prenatal appointments

| | | | |
|---------------|-----------|-----------|-----------|
| 1Q-05/06 | 8 | 28 | 20 |
| 2Q-05/06 | 8 | 29 | 21 |
| 3Q-05/06 | 7 | 5 | -2 |
| 4Q-05/06 | 7 | 9 | 2 |
| Total: | 30 | 71 | 41 |

30 participants will increase their knowledge of healthy pregnancies and their own bodies and health and how care for their infant's

| | | | |
|---------------|-----------|-----------|-----------|
| 1Q-05/06 | 8 | 28 | 20 |
| 2Q-05/06 | 8 | 10 | 2 |
| 3Q-05/06 | 7 | 5 | -2 |
| 4Q-05/06 | 7 | 9 | 2 |
| Total: | 30 | 52 | 22 |

30 postpartum participants are enrolled in parenting services and family support for which they are eligible

| | | | |
|---------------|-----------|-----------|------------|
| 1Q-05/06 | 8 | 14 | 6 |
| 2Q-05/06 | 8 | 0 | -8 |
| 3Q-05/06 | 7 | 5 | -2 |
| 4Q-05/06 | 7 | 0 | -7 |
| Total: | 30 | 19 | -11 |

| Quarter | Goal | Actual | Variance | Achieved | Approved |
|---------|------|--------|----------|----------|----------|
|---------|------|--------|----------|----------|----------|

Program Title: Nubian Mentoring Program
Agency: Everlasting Hope Ministries
Contract #: 2003-302 **Contract From / To:** 07/01/2005 06/30/2006

15 clients will increase knowledge of healthy pregnancies and their own bodies and health

| | | | |
|---------------|----|----|----|
| 1Q-05/06 | 4 | 15 | 11 |
| 2Q-05/06 | 4 | 12 | 8 |
| 3Q-05/06 | 4 | 35 | 31 |
| 4Q-05/06 | 3 | 35 | 32 |
| Total: | 15 | 97 | 82 |

15 participants attend 75% of prenatal appointments scheduled according to the normal regimen of care according to the clients'

| | | | |
|---------------|----|----|----|
| 1Q-05/06 | 3 | 11 | 8 |
| 2Q-05/06 | 4 | 20 | 16 |
| 3Q-05/06 | 4 | 28 | 24 |
| 4Q-05/06 | 4 | 30 | 26 |
| Total: | 15 | 89 | 74 |

15 participants will increase knowledge of infant care

| | | | |
|---------------|----|----|----|
| 1Q-05/06 | 3 | 15 | 12 |
| 2Q-05/06 | 4 | 12 | 8 |
| 3Q-05/06 | 4 | 35 | 31 |
| 4Q-05/06 | 4 | 35 | 31 |
| Total: | 15 | 97 | 82 |

| Quarter | Goal | Actual | Variance | Achieved | Approved |
|---------|------|--------|----------|----------|----------|
|---------|------|--------|----------|----------|----------|

Program Title: Nurtuting Parenting Program

Agency: Childrens Nurturing Project

Contract #: 2006-101

Contract From / To: 04/01/2006 06/30/2006

80% (Up to 32) of families completing the 12-week session weill demonstrate improved parenting skills, attitudes, and beliefs

| | | | | | |
|---------------|---|---|---|--|--|
| 4Q-05/06 | 0 | 0 | | | |
| Total: | 0 | 0 | 0 | | |

90% (Up to 36) of families will have an increased awareness of community resources

| | | | | | |
|---------------|---|---|---|--|--|
| 4Q-05/06 | 0 | 0 | | | |
| Total: | 0 | 0 | 0 | | |

| Quarter | Goal | Actual | Variance | Achieved | Approved |
|---------|------|--------|----------|----------|----------|
|---------|------|--------|----------|----------|----------|

Program Title: Stepping Stones
Agency: City of Benicia/Parks & Comm. Services
Contract #: 2003-10 **Contract From / To:** 07/01/2005 06/30/2006

75% (4) children will display elements of school readiness

| | | | | | |
|---------------|---|---|----|--|--|
| 1Q-05/06 | 1 | 1 | | | |
| 1Q-05/06 | 1 | 0 | -1 | | |
| 2Q-05/06 | 1 | 0 | -1 | | |
| 3Q-05/06 | 1 | 0 | -1 | | |
| Total: | 4 | 1 | -3 | | |

75% (4) parents will display a minimum of 2 effective parenting skills

| | | | | | |
|---------------|---|---|---|--|--|
| 1Q-05/06 | 1 | 1 | | | |
| 2Q-05/06 | 1 | 1 | | | |
| 3Q-05/06 | 3 | 3 | | | |
| 4Q-05/06 | 1 | 3 | 2 | | |
| Total: | 6 | 8 | 2 | | |

| Quarter | Goal | Actual | Variance | Achieved | Approved |
|---------|------|--------|----------|----------|----------|
|---------|------|--------|----------|----------|----------|

Program Title: Welcome Baby
Agency: Childrens Nurturing Project
Contract #: 2005-101 **Contract From / To:** 07/01/2005 06/30/2006

10% of children screened will be identified as having special needs significant to require follow-up services

| | | | |
|---------------|----|----|----|
| 1Q-05/06 | 21 | 76 | 55 |
| Total: | 21 | 76 | 55 |

90% of infants/children enrolled will be linked with a PCP for ongoing care

| | | | |
|---------------|-----|-----|----|
| 1Q-05/06 | 0 | 6 | 6 |
| 2Q-05/06 | 87 | 87 | |
| 3Q-05/06 | 37 | 44 | 7 |
| 4Q-05/06 | 37 | 62 | 25 |
| Total: | 161 | 199 | 38 |

90% of parents will verbalize/demonstrate knowledge and awareness of age appropriate developmental milestones

| | | | |
|---------------|-----|-----|----|
| 1Q-05/06 | 0 | 6 | 6 |
| 2Q-05/06 | 87 | 87 | |
| 3Q-05/06 | 37 | 66 | 29 |
| 4Q-05/06 | 37 | 66 | 29 |
| Total: | 161 | 225 | 64 |



Provider Capacity: Contacts by Program

Fiscal Year: 2005/2006

| Program | Family-based ECE | Center-Based ECE | Kindergarden Teachers | Health Care | Family Support | Other | Unknown | Total |
|---|----------------------|---------------------|--------------------------|-------------------|--------------------|--------------------|-------------------|--------------|
| ABCD Constructing Connections | 368 21% | 110 16% | 4 50% | 33 14% | 85 20% | 620 73% | 2 1% | 1,222 28% |
| BabyFirst Solano (African- American & Teens) | | | | 137 59% | 177 42% | 150 18% | | 464 11% |
| BabyFirst Solano (ATOD) | | | | 17 7% | 28 7% | | | 45 1% |
| CARES 1 | | | | | 1 0% | | | 1 0% |
| CARES 2 | 823 46% | 387 56% | | | 15 4% | 53 6% | 355 97% | 1,633 37% |
| Co-Sponsorship | 2 0% | 21 3% | 3 38% | 27 12% | 14 3% | 8 1% | 7 2% | 82 2% |
| Grant Writing | | | | | 1 0% | 2 0% | | 3 0% |
| Grantee Training | | 3 0% | | 20 9% | 32 8% | 14 2% | | 69 2% |
| IFSI - Childrens Network | | | | | 30 7% | | | 30 1% |
| Markham School Readiness | | | | | | | 1 0% | 1 0% |
| Preschool For All Planning | | 3 0% | | | 2 0% | | | 5 0% |
| Silveyville School Readiness | 2 0% | 11 2% | 1 13% | | 37 9% | 3 0% | | 54 1% |
| Solano Kids Insurance Program (SKIP) | 600 33% | 155 22% | | | | | | 755 17% |
| Grand Total: | 1,795 41% | 690 16% | 8 0% | 234 5% | 422 10% | 850 19% | 365 8% | 4,364 |



Community Strengthening Event Summary

Fiscal Year: 2005/2006

| Program Title | Agency | Contract # | Estimate Size of Audience | # of Events |
|--|--|------------|---------------------------|-------------|
| Anna Kyle School Readiness | | | | |
| | Fairfield-Suisun Unified School District | 2004-404 | 10 | 1 |
| | | | 4 | 1 |
| | | | 20 | 1 |
| | | | 25 | 1 |
| | | | 100 | 1 |
| | | | 250 | 1 |
| | | | 300 | 1 |
| | | | Total: | 7 |
| BabyFirst Solano (African-American & Teens) | | | | |
| | Solano County Health and Social Services | 2003-303 | 201 | 3 |
| | | | 509 | 4 |
| | | | 11 | 5 |
| | | | 110 | 5 |
| | | | 17 | 8 |
| | | | 625 | 9 |
| | | | 360 | 10 |
| | | | 20 | 20 |
| | | | 23 | 23 |
| | | | 27 | 27 |
| | | | 42 | 42 |
| | | | 127 | 45 |
| | | | 16 | 1 |
| | | | 294 | 3 |
| | | | 156 | 3 |
| | | | 94 | 4 |
| | | | Total: | 212 |
| Community Education | | | | |
| | First 5 Solano | D | 5 | 1 |
| | | | Total: | 1 |
| Loma Vista School Readiness | | | | |
| | Vallejo City Unified School District | 2003-401 | 10 | 1 |
| | | | 17 | 8 |
| | | | 25 | 3 |
| | | | 425 | 1 |
| | | | 250 | 1 |
| | | | 20 | 1 |
| | | | 20 | 1 |
| | | | 5 | 1 |
| | | | 8 | 1 |
| | | | 9 | 1 |
| | | | Total: | 19 |
| Markham School Readiness | | | | |
| | Vacaville Unified School District | 2004-403 | 125 | 1 |
| | | | 50 | 1 |
| | | | 500 | 1 |
| | | | 650 | 2 |
| | | | 16 | 1 |
| | | | Total: | 6 |
| Silveyville School Readiness | | | | |
| | Dixon Unified School District | 2003-402 | 12 | 1 |
| | | | 120 | 3 |
| | | | 100 | 1 |
| | | | Total: | 5 |
| | | | Grand Total: | 250 |