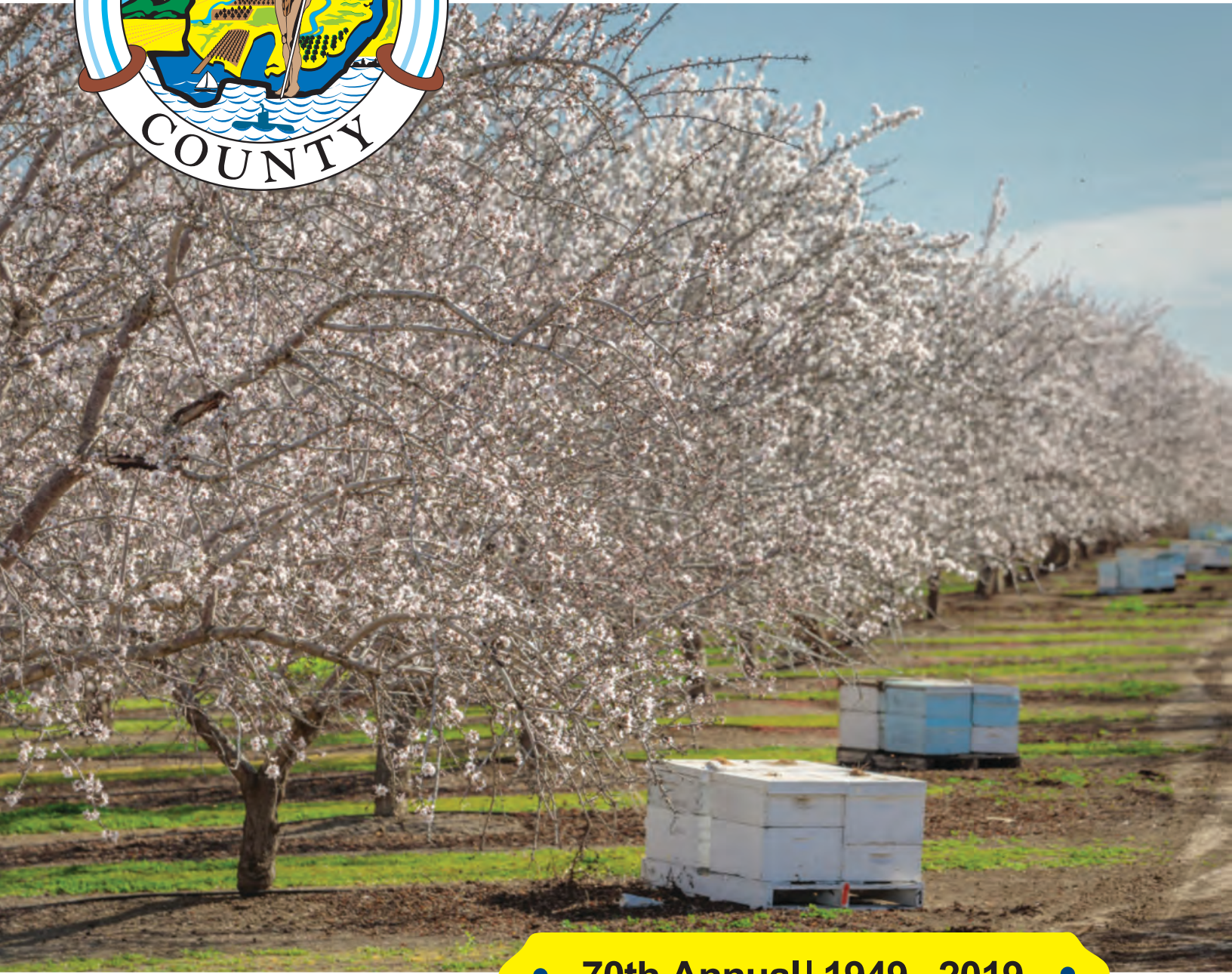




# Department of Agriculture Weights and Measures



• 70th Annual | 1949 - 2019 •

# 2019 Crop and Livestock Report

# Table of Contents

<b>3</b>	<b>Agricultural Commissioner's Letter</b>
<b>4</b>	<b>Ag Tour 2019</b>
<b>5</b>	<b>Value Summary</b>
<b>6</b>	<b>Top Ten Commodities</b>
<b>7</b>	<b>Fruit and Nut Crops</b>
<b>8</b>	<b>Almonds in Solano County</b>
<b>10</b>	<b>Vegetable Crops</b>
<b>11</b>	<b>Nursery Products</b>
<b>12</b>	<b>Field and Forage Crops</b>
<b>13</b>	<b>Livestock and Poultry</b>
<b>14</b>	<b>Livestock and Poultry Products</b>
<b>15</b>	<b>Apiary Products</b>
<b>16</b>	<b>Seed Crops</b>
<b>17</b>	<b>Pest Prevention</b>
<b>18</b>	<b>Export Markets</b>
<b>19</b>	<b>Organic Farming</b>
<b>20</b>	<b>Farmers' Markets</b>
<b>21</b>	<b>Weights and Measures</b>
<b>22</b>	<b>Staff</b>
<b>23</b>	<b>General County Information</b>

Photos by:

Cathy Blazy, Matthew Carl, Ryan Chalk, Karyn Fankhouser, Alexander Nguyen, Andrina Quan, Alexa Schieferecke, Cody Zacharia

**ED KING**  
Agricultural Commissioner  
Sealer of Weights and Measures

**PRISCILLA YEANEY**  
Assistant Agricultural Commissioner  
Sealer of Weights and Measures



**OFFICE LOCATION:**  
2543 Cordelia Road  
Fairfield, CA 94534

**MAILING ADDRESS:**  
675 Texas Street  
Fairfield, CA 94533

Phone (707) 784-1310  
Fax (707) 784-1330  
[www.solanocounty.com](http://www.solanocounty.com)

To: Karen Ross, Secretary  
California Department of Food and Agriculture  
and  
The Honorable Board of Supervisors of Solano County

I am pleased to present the 2019 Solano County Crop and Livestock Report pursuant to sections 2272 and 2279 of the California Food and Agricultural Code. This report is the 70<sup>th</sup> annual crop report issued by the Agricultural Commissioner. This report lists farm gate values only. Although processing capacity allows some growers to add or recapture value, this report is not a measure of profitability and does not account for the re-spending and support multipliers generated by agricultural production in the local economy.

The gross value of Solano County agricultural production in 2019 was \$372,113,000, representing a slight increase of less than one percent from 2018. For the first time, almonds are Solano's top grossing crop with a total value of \$55,312,000. New bearing acreage, increased yields and continued strong pricing accounted for an 89% increase in the almond crop value.

Processing Tomatoes ranked second in value at \$37,041,000, an increase of 7% over 2018. Cattle and Calves ranked third in value at \$36,967,000, a 5% reduction resulting from lower prices despite a total head count and liveweight consistent with 2018. Nursery Products, the previous years' top crop, dropped to fourth position at \$31,231,000, a 28% decrease, due to market fluctuations, declines in tree and grapevine propagation and overall reduction in production acreage. Walnuts rounded out the top five crops of 2019 gaining 9% in value at \$27,492,000.

I would like to express my sincere appreciation to all the farmers and ranchers who contributed vital data without which this report would not have been possible. I also thank our staff for their diligence and teamwork in compiling and producing this report.

This report, and all previous crop reports dating to 1949, along with information about the programs and services provided by the Solano County Department of Agriculture/Weights and Measures may be viewed online at [www.solanocounty.com/ag](http://www.solanocounty.com/ag).

Respectfully submitted,

Ed King  
Agricultural Commissioner/Sealer of Weights and Measures

# Ag Tour - 2019

In April 2019, the Solano County Agricultural Advisory Committee hosted the County Board of Supervisors on a tour of local farms. The tour featured stops at Dixon Ridge Farms, Viguie Farming and Emigh Livestock—three prime examples of Solano’s remarkable agricultural diversity. Each farm visit examined how unique soil and water conditions influence crop production in different areas of the county, including walnut orchards along Putah Creek in the Winters agricultural region, diversified field crop and orchards on the Dixon Ridge, and sheep and cattle ranching on the Jepson Prairie and in the Montezuma Hills.



Tour guest speakers from the UC Cooperative Extension, Solano Irrigation District, USDA Natural Resources Conservation Service, North Delta Water Agency and Solano County shared perspectives into local soil and water dynamics, groundwater management and water and land use policies in the Delta that affect the long-term sustainability of agriculture and natural resource conservation in Solano County.

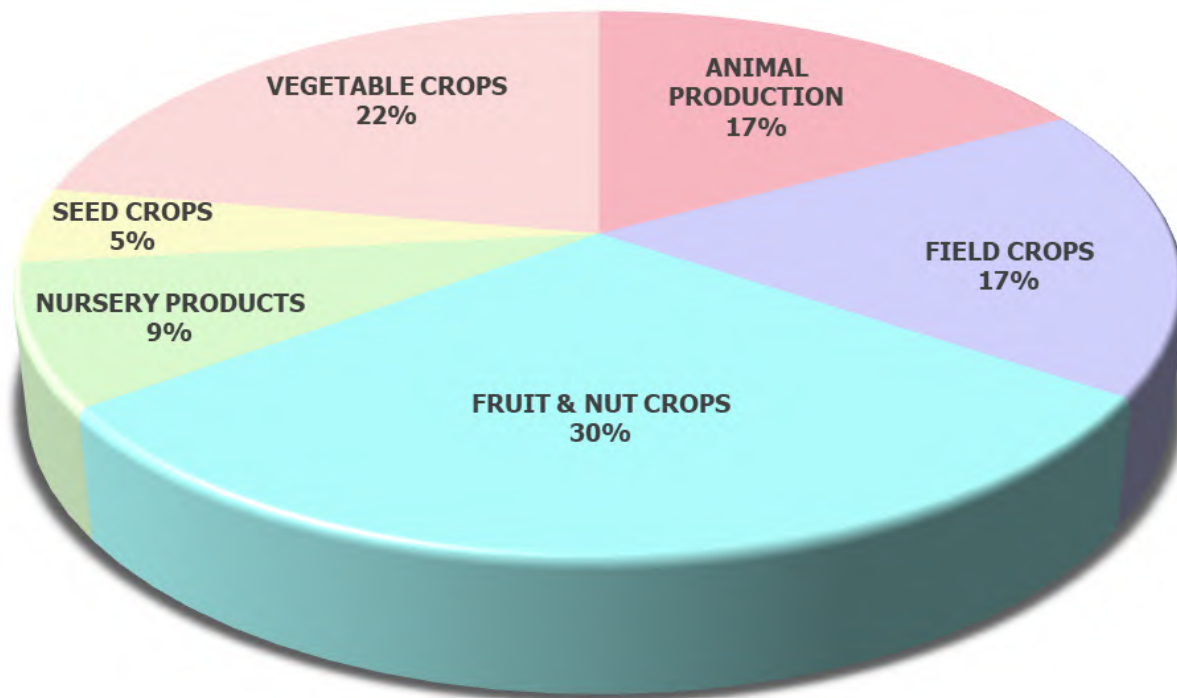
# Value Summary

YEAR	ANIMAL PRODUCTION <sup>1</sup>	FIELD CROPS	FRUIT & NUT CROPS	NURSERY PRODUCTS	SEED CROPS	VEGETABLE CROPS	TOTAL VALUE
2019	63,814,000	64,530,000	113,091,000	31,231,000	16,686,000	82,761,000	<b>\$372,113,000</b>
2018 <sup>2</sup>	60,497,000	71,140,000	93,360,000	43,248,000	28,720,000	74,750,000	<b>\$371,715,000</b>
2017	50,756,000	64,474,000	108,353,000	44,627,000	21,459,000	64,887,000	<b>\$354,556,000</b>
2016	37,259,000	59,006,000	127,228,000	39,754,000	16,478,000	67,447,000	<b>\$347,172,000</b>
2015	57,277,000	78,454,000	87,741,000	37,648,000	11,729,000	81,020,000	<b>\$353,869,000</b>
2014	62,387,000	98,672,000	86,624,000	35,594,000	16,900,000	78,468,000	<b>\$378,645,000</b>
2013	51,340,000	88,744,000	97,150,000	35,144,000	16,628,000	59,209,000	<b>\$348,215,000</b>
2012	63,425,000	84,604,000	87,368,000	32,707,000	17,680,000	56,911,000	<b>\$342,695,000</b>
2011	52,458,000	83,812,000	63,420,000	23,630,000	14,671,000	53,668,000	<b>\$291,659,000</b>
2010	46,011,000	57,072,000	54,874,000	23,352,000	14,391,000	63,698,000	<b>\$259,398,000</b>
2009	40,116,000	50,073,000	48,191,000	33,499,000	15,859,000	64,184,000	<b>\$251,922,000</b>

<sup>1</sup>Includes livestock and poultry, livestock and poultry products, and apiary production

<sup>2</sup>Adjusted values

## 2019 Value by Crop Group





# Top Ten Commodities

	2019 CROP VALUE	2019 CROP RANKING	2018 CROP RANKING <sup>1</sup>
<b>Almonds</b>	\$55,312,000	1	6
<b>Tomatoes (Processing)</b>	\$37,041,000	2	3
<b>Cattle &amp; Calves</b>	\$36,967,000	3	2
<b>Nursery Products</b>	\$31,231,000	4	1
<b>Walnuts</b>	\$27,492,000	5	8
<b>Alfalfa (Hay)</b>	\$27,159,000	6	4
<b>Grapes (Wine)</b>	\$21,587,000	7	5
<b>Sunflower (Seed)</b>	\$15,666,000	8	7
<b>Wheat</b>	\$5,825,000	9	9
<b>Sheep and Lambs</b>	\$4,386,000	10	NA

<sup>1</sup>Adjusted rankings

# Fruit & Nut Crops



	Year	Bearing Acres	Ton Per Acre	Production Total (Tons)	Value Per Ton (\$)	Total Value (\$)	Change
<b>Almonds (Meats)</b>	2019	14,000	0.86	12,000	4,600	55,312,000	<b>89%</b>
	2018	13,010	0.57	6,170	4,750	29,299,000	
<b>Total Wine Grapes<sup>1</sup></b>	2019	3,730	5.48	20,400	-	21,587,000	<b>-27%</b>
	2018	3,720	6.44	23,970	-	29,404,000	
Wine Grapes, Red	2019	-	-	11,900	1,230	14,644,000	<b>-15%</b>
	2018	-	-	11,460	1,500	17,175,000	
Wine Grapes, White	2019	-	-	8,520	815	6,943,000	<b>-43%</b>
	2018	-	-	12,510	980	12,229,000	
<b>Olives<sup>2</sup></b>	2019	220	1.41	308	2,360	727,000	<b>-40%</b>
	2018	170	1.61	276	4,410	1,218,000	
<b>Prunes (Dried)</b>	2019	1,260	2.11	2,510	1,660	4,153,000	<b>-29%</b>
	2018	1,200	2.49	2,980	1,975	5,886,000	
<b>Walnuts</b>	2019	10,610	1.75	18,600	1,480	27,492,000	<b>9%</b>
	2018	10,590	1.67	17,700	1,420	25,133,000	
<b>Miscellaneous<sup>3</sup></b>	2019	880	-	-	-	3,820,000	<b>58%</b>
	2018	965	-	-	-	2,420,000	
<b>Total Fruit &amp; Nut Crops</b>	<b>2019</b>	<b>30,720</b>				<b>\$113,091,000</b>	<b>21%</b>
	<b>2018</b>	<b>29,655</b>				<b>\$93,360,000</b>	

Figures may not add due to rounding.

<sup>1</sup> Includes acreage not harvested or sold.

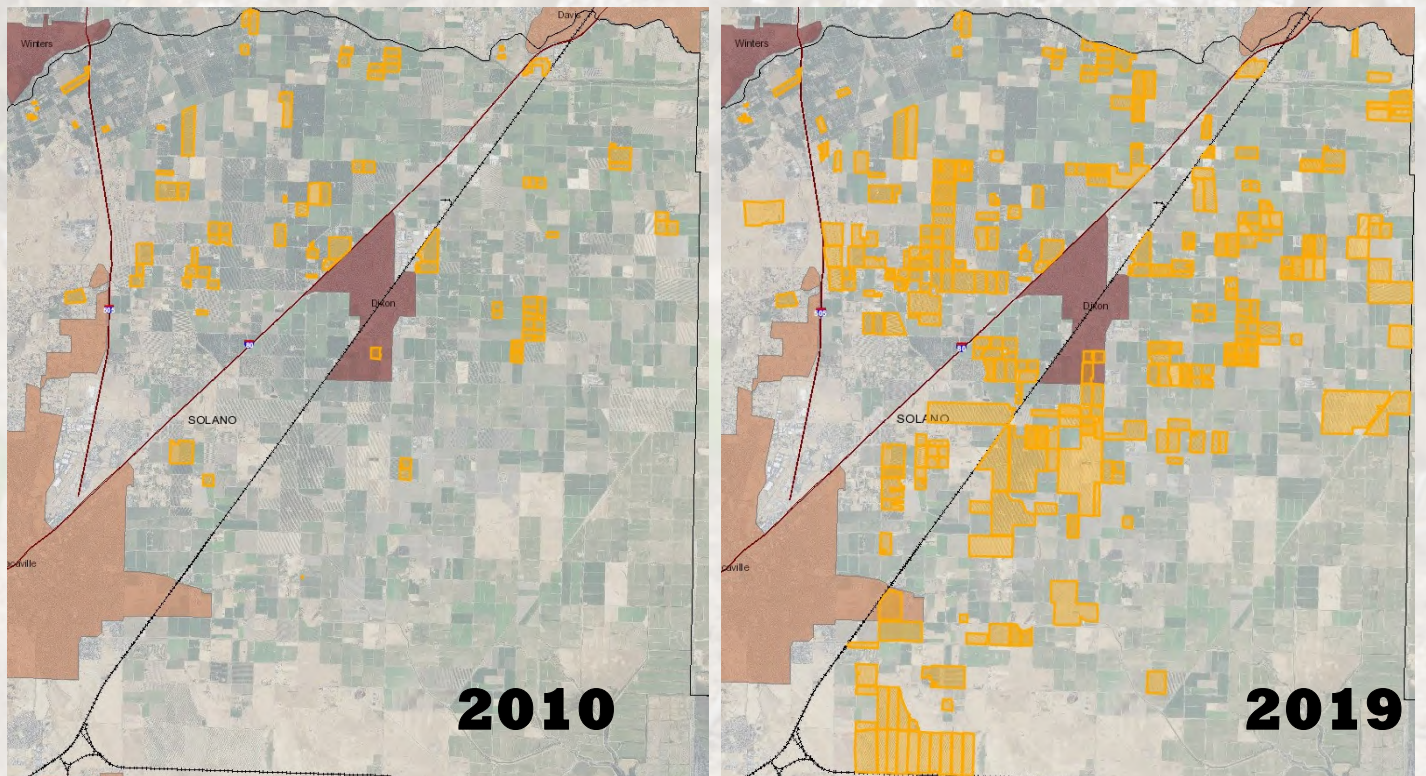
<sup>2</sup> Value per unit based on oil value.

<sup>3</sup> Includes apples, apricots, blackberries, cherries, citrus, figs, grapes (table), kiwi, nectarines, peaches, pears, persimmons, pistachios, plums, pluots, pomegranates and strawberries.

# Almonds in Solano County

Due to a steady increase of orchard plantings over the past two decades, almonds are Solano County's top grossing crop, valued at \$55,312,000 for 2019. Almond orchard plantings in Solano County have expanded from 1,531 acres in 2000 to more than 20,000 today, 14,000 acres of which are currently bearing. This rapid growth mirrors what is happening elsewhere in the Sacramento and San Joaquin Valleys, which have experienced significant growth in the number of acres planted during the past 20 years, rising from 510,000 bearing-acres in 2000 to 1,260,000 bearing-acres today.<sup>1</sup> In addition to being popular as a nutritious snacking nut, the demand for a variety of value-added almond products both domestically and internationally has increased dramatically in recent years securing almonds a spot as one of California's three premier agricultural crops with grapes and dairy products.

For the past 20 years, almonds have been grown almost exclusively on the Dixon Ridge in Solano County. Today, almond orchards can be found in several locations throughout the County, including in the Elmira-Maine and Jepson Prairies, Montezuma Hills and the Western Hills agricultural regions. As a result, more than 12,000 tons of almonds were harvested in Solano County in 2019, benefitting local growers, who sell their product to regional hullers and shellers that process the nut for domestic markets and international export. The Almond Board of California recently reported that 67 percent of California's almond harvest is exported to more than 100 countries



Almond acreage increase between 2010 and 2019 in Solano County.

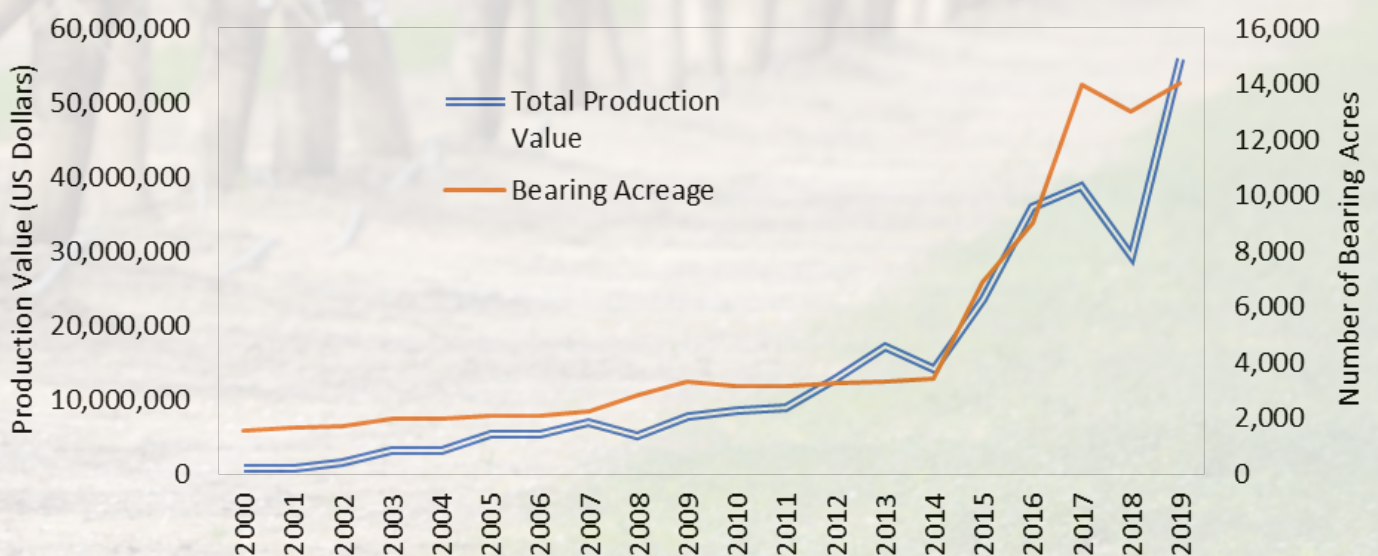


around the world.<sup>2</sup> Locally, the Solano County Agriculture Department issued 21 phytosanitary certificates for 454 tons of raw almond exports destined to four countries in 2019.

Almond production relies on honeybees to pollinate trees and an adequate supply of surface and groundwater to irrigate orchards. During late winter and early spring, beekeepers mobilize thousands of hives into California for the annual almond bloom. In 2019, more than 27,000 honeybee colonies provided pollination services in Solano County – mostly for almonds – at a gross production value of \$3,219,000. Solano’s almond growers irrigate orchards through efficient micro-irrigation systems using a combination of surface water supplied by the Solano Irrigation District from Lake Berryessa and groundwater pumped from ag wells. Recent research from the University of California, Davis and California State University, Sacramento shows that while almonds have a high water usage footprint compared to many other crops, they also rank high in nutritional value and provide a significant boost to the local and statewide economy, with a total gross crop value of more than \$6 billion annually.<sup>3,4</sup>

The U.S. Department of Food and Agriculture is projecting a record harvest of 3 billion pounds of California almonds in 2020.<sup>5</sup> As the demand for almonds continues to rise and new bearing acreage comes in to production, a variety of issues including trade policies, lasting effects of recent droughts, potential climate change impacts, competing demands for water resources and new groundwater sustainability regulations will all influence the future of almonds in Solano County.

Bearing almond acreage growth and corresponding production values increases between 2000—2019 in Solano County.



<sup>1</sup>U.S. Department of Agriculture, National Agricultural Statistics Service, 2020 California Almond Forecast.

<sup>2</sup>Almond Board of California, Almond Almanac 2019.

<sup>3</sup>Fulton, J.; Norton, M.; Shilling, F. Water-indexed benefits and impacts of California almonds. *Ecol. Indic.* 2019, 96, 711–717.

<sup>4</sup>U.S. Department of Agriculture, National Agricultural Statistics Service, 2020 California Objective Almond Measurement Report

<sup>5</sup>Ibid.

# Vegetable Crops

	Year	Acreage	Tons Per Acre	Production Total (Tons)	Value per Ton (\$)	Total Value (\$)	Change
<b>Tomatoes (Processing)</b>	2019	10,400	47.1	490,000	75.70	37,041,000	<b>7%</b>
	2018	11,200	42.0	472,000	73.50	34,720,000	
<b>Vegetable (Processing)<sup>1</sup></b>	2019	1,460	-	-	-	3,390,000	<b>-20%</b>
	2018	1,310	-	-	-	4,224,000	
<b>Vegetable (Fresh)<sup>2</sup></b>	2019	884	-	-	-	42,330,000	<b>18%</b>
	2018	693	-	-	-	35,806,000	
<b>Total Vegetable Crops</b>	<b>2019</b>	<b>12,700</b>	<b>-</b>	<b>-</b>	<b>-</b>	<b>\$82,761,000</b>	<b>10%</b>
	<b>2018</b>	<b>13,200</b>	<b>-</b>	<b>-</b>	<b>-</b>	<b>\$74,750,000</b>	

Figures may not add due to rounding.

<sup>1</sup> Includes cucumbers (pickling), garlic, onion and peppers.

<sup>2</sup> Includes beans, brassicas, carrot, corn, cucumber, endive, garlic, herbs, leafy greens, melons, mushrooms, onions, peas, peppers, pumpkins, radishes, salad greens, sprouts, squash, sweet corn, tomatoes, and watermelon.



# Nursery Products

	Year	Acreage	Total Value (\$)	Change
<b>Nursery Stock<sup>1</sup></b>	2019	1,330	30,686,000	-18%
	2018	1,880	37,368,000	
<b>Propagative Stock<sup>2</sup></b>	2019	83	545,000	-91%
	2018	98	5,880,000	
<b>Total Nursery Production</b>	<b>2019</b>	<b>1,410</b>	<b>\$31,231,000</b>	<b>-28%</b>
	<b>2018</b>	<b>1,978</b>	<b>\$43,248,000</b>	



Figures may not add due to rounding.

<sup>1</sup> Includes Christmas trees, cut flowers, greenhouse plants, herbaceous and woody ornamentals, and turf.

<sup>2</sup> Includes grafted grapevines, grapevine rootstock, grapevine cuttings, and propagated fruit and nut trees.

# Field & Forage Crops

	Year	Bearing Acres	Tons Per Acre	Production Total (Tons)	Value Per Ton (\$)	Total Value (\$)	Change
<b>Beans, Dry</b>	2019	2,490	1.09	2,700	1,106	3,003,000	<b>3%</b>
	2018	2,550	1.22	3,100	939	2,918,000	
<b>Corn (Grain)</b>	2019	3,970	5.04	20,000	151	3,017,000	<b>-19%</b>
	2018	5,290	4.44	23,500	159	3,743,000	
<b>Safflower</b>	2019	5,320	1.06	5,640	421	2,375,000	<b>4%</b>
	2018	4,170	1.36	5,660	403	2,285,000	
<b>Triticale</b>	2019	5,090	2.82	14,400	151	2,171,000	<b>12%</b>
	2018	5,370	2.24	12,000	161	1,940,000	
<b>Wheat</b>	2019	15,490	2.66	41,200	141	5,825,000	<b>-23%</b>
	2018	17,630	2.36	41,600	182	7,580,000	
<b>Miscellaneous<sup>1</sup></b>	2019	10,400	-	-	-	8,498,000	<b>31%</b>
	2018	7,910	-	-	-	6,488,000	
<b>Hay</b>		<b>Value Per Ton (\$)</b>					
<b>Alfalfa</b>	2019	25,600	5.46	140,000	194	27,159,000	<b>-14%</b>
	2018	28,400	5.79	164,500	193	31,746,000	
<b>Grain</b>	2019	2,500	3.21	8,000	160	1,288,000	<b>-21%</b>
	2018	3,150	3.73	12,300	127	1,633,000	
<b>Ryegrass</b>	2019	5,570	2.52	14,000	92	1,290,000	<b>-45%</b>
	2018	7,030	2.98	21,000	111	2,335,000	
<b>Sudangrass</b>	2019	3,930	3.64	14,300	143	2,042,000	<b>-25%</b>
	2018	5,350	3.48	18,600	147	2,732,000	
<b>Grass/Forage</b>	2019	3,760	2.88	10,800	140	1,513,000	<b>-3%</b>
	2018	4,440	2.77	12,300	127	1,562,000	
<b>Pasture Acreage</b>		<b>Value Per Acre (\$)</b>					
<b>Irrigated<sup>2</sup></b>	2019	19,500			117	2,259,000	<b>0%</b>
	2018	21,500			105	2,258,000	
<b>Rangeland<sup>3</sup></b>	2019	189,000			22	4,090,000	<b>4%</b>
	2018	187,000			21	3,920,000	
<b>Total Field Crops</b>	<b>2019</b>	<b>293,000</b>				<b>\$64,530,000</b>	<b>-9%</b>
	<b>2018</b>	<b>299,000</b>				<b>\$71,140,000</b>	

Figures may not add due to rounding.

<sup>1</sup> Includes barley, barley silage, corn silage, industrial hemp, oat grain, safflower grain (bird seed), sorghum/milo, straw and sunflower oil.

<sup>2</sup> Acreage from 2019 permit data.

<sup>3</sup> Calculated using data from California Department of Conservation 2014-2016 Land Use Conversion Report.

# Livestock & Poultry



	Year	Number of Head	Total Liveweight	Unit	Value per Unit (\$)	Total Value (\$)	Change
<b>Cattle &amp; Calves<sup>1</sup></b>	2019	23,200	274,100	Cwt	135	36,967,000	<b>-5%</b>
	2018 <sup>2</sup>	23,000	273,400	Cwt	142	38,746,000	
<b>Sheep &amp; Lambs<sup>3</sup></b>	2019	43,700	45,500	Cwt	96	4,386,000	<b>18%</b>
	2018 <sup>2</sup>	38,500	30,900	Cwt	120	3,721,000	
<b>Miscellaneous<sup>4</sup></b>	2019	1,131,000	-	-	-	1,173,000	<b>4%</b>
	2018	1,131,000	-	-	-	1,123,000	
<b>Total Livestock &amp; Poultry</b>	<b>2019</b>	<b>1,198,000</b>	-	-	-	<b>\$42,526,000</b>	<b>-2%</b>
	<b>2018</b>	<b>1,193,000</b>	-	-	-	<b>\$43,590,000</b>	

Figures may not add due to rounding.

<sup>1</sup> Includes beef stocker gain value, dairy calves, dairy yearlings, dairy replacement heifers, and dairy cull cows.

<sup>2</sup> Adjusted values

<sup>3</sup> Includes feeder lamb gain.

<sup>4</sup> Includes goats and poultry.

# Livestock & Poultry Products



	Year	Production	Value Per Unit (\$)	Total Value (\$)	Change
<b>Eggs, Chicken</b>	2019	45,700 Dozen	5.93/dozen	271,000	<b>-4%</b>
	2018	45,000 Dozen	6.27/dozen	282,000	
<b>Wool</b>	2019	63,500 lbs	3.15/lb	200,000	<b>-12%</b>
	2018	100,000 lbs	2.28/lb	227,000	
<b>Miscellaneous<sup>1</sup></b>	2019	-	-	16,167,000	<b>13%</b>
	2018	-	-	14,253,000	
<b>Total Livestock &amp; Poultry Products</b>	<b>2019</b>	-	-	<b>\$16,638,000</b>	<b>13%</b>
	<b>2018</b>	-	-	<b>\$14,762,000</b>	

Figures may not add due to rounding.  
<sup>1</sup>Includes goat milk and market milk.

# Apiary Products



	Year	No. of Colonies	Value Per Colony (\$)	Total Value (\$)	Change
<b>Apiary Products<sup>1</sup></b>	2019	-	-	1,431,000	89%
	2018	-	-	759,000	
<b>Pollination<sup>2</sup></b>	2019	27,000	119.00	3,219,000	132%
	2018	18,000	75.00	1,386,000	
<b>Total Apiary Production</b>	<b>2019</b>	<b>-</b>	<b>-</b>	<b>\$4,650,000</b>	<b>117%</b>
	<b>2018</b>	<b>-</b>	<b>-</b>	<b>\$2,145,000</b>	



Figures may not add due to rounding.

<sup>1</sup> Apiary products include beeswax, honey, honeycomb, packaged bees, and queen bees.

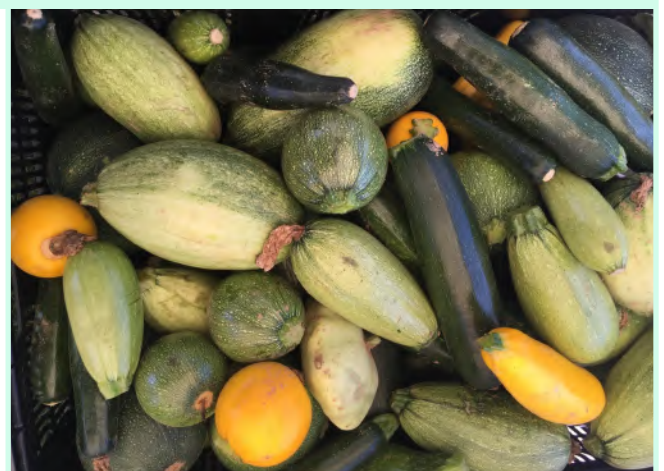
<sup>2</sup> Value based on acreage of crops requiring bees for pollination and number of colonies required for adequate pollination. Colony fee varies by crop. Crops pollinated include almond, cherry, cucumber, melon, prune, pumpkin, squash, sunflower, vine seed, and watermelon.

# Seed Crops



	Year	Acreage	Yield Per Acre (lbs)	Production Total (lbs)	Value Per lb	Total Value (\$)	Change
<b>Sunflower</b>	2019	7,750	1,340	10,606,000	1.48	15,666,000	<b>-38%</b>
	2018	8,575	1,650	14,165,000	1.78	25,203,000	
<b>Miscellaneous<sup>1</sup></b>	2019	370	-	-	-	1,020,000	<b>-71%</b>
	2018	750	-	-	-	3,517,000	
<b>Total Seed Crops</b>	<b>2019</b>	<b>8,120</b>	-	-	-	<b>\$16,686,000</b>	<b>-42%</b>
	<b>2018</b>	<b>9,325</b>	-	-	-	<b>\$28,720,000</b>	

Figures may not add due to rounding.  
<sup>1</sup>Includes cucumber, melon, squash, watermelon and wheat.





# Pest Prevention

The California Food and Agricultural Code mandates pest prevention programs to prevent the introduction and spread of pests in California. Pest prevention involves Pest Exclusion, Pest Detection, Pierce’s Disease Control, and the State Export Certification Program.

**Pest Exclusion** is the first line of defense to prevent detrimental, non-native pests from entering the county. In 2019, a total of 624 premise visits occurred at shipping terminals, nurseries, and residences. During these visits 4,044 shipments of plant material, seed, and household goods were inspected. A total of 100 shipments were rejected for live pests, material not properly certified, or improper container markings. Rejected plant material is returned to the shipper, reconditioned and released, or destroyed.

Department personnel inspected 19 production nurseries, encompassing approximately 1,950 acres for pests and diseases. Local nurseries produce a variety of nursery stock, including ornamental plants, sod (turfgrass), vegetable plants, and fruit trees, for sale within California as well as to other states and countries.

The **Pierce’s Disease Control Program** works to prevent the spread of the Glassy-winged Sharpshooter into Solano County, which is the main insect vector of Pierce’s Disease. In 2019, Department personnel inspected 597 shipments of nursery stock arriving from infested counties in California.

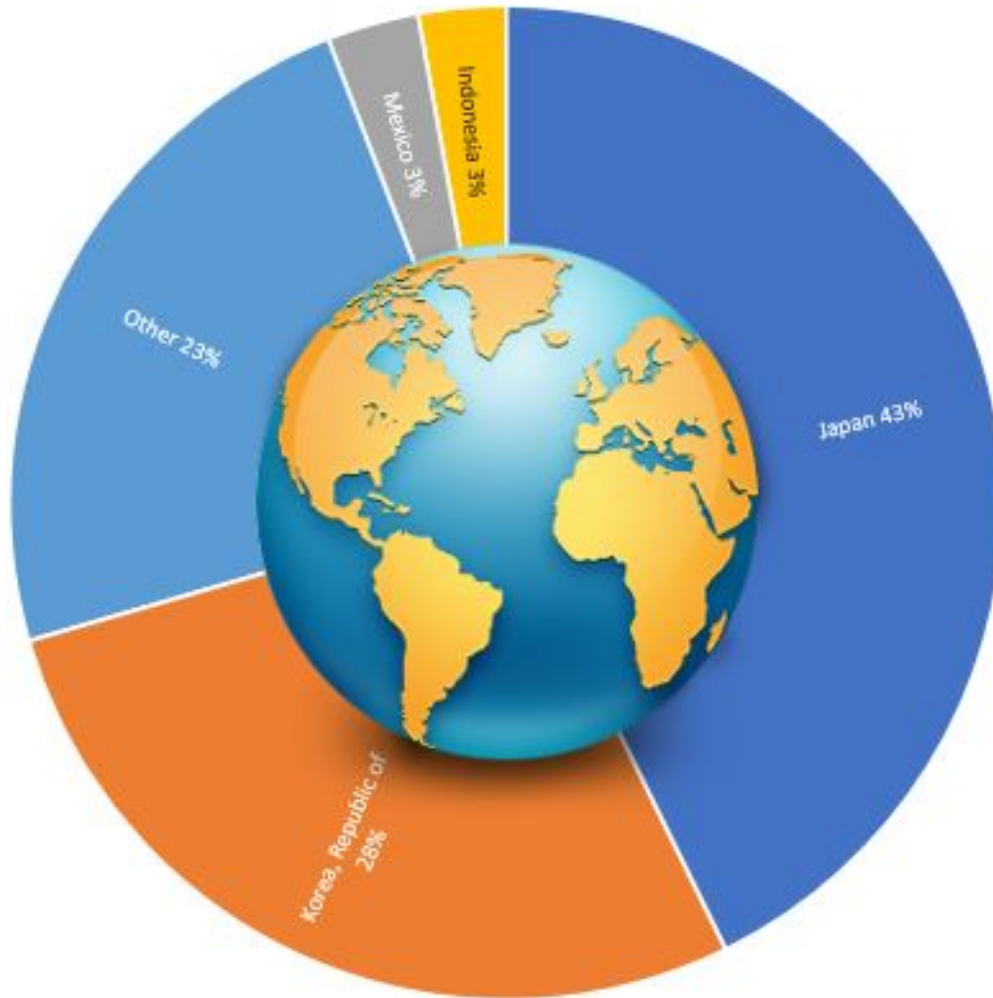
The **Sudden Oak Death** program’s purpose is to prevent the spread of the disease caused by the pathogen *Phytophthora ramorum*. Department personnel conducted 51 inspections at 9 production shipping nurseries. One incident of Sudden Oak Death was found in a production nursery, resulting in the destruction of infested material and increased inspection to ensure no further infestation remained active.

**Pest Detection** is Solano County’s second line of defense against the introduction and spread of insect pests of concern. Insect traps are placed throughout the county and monitored to detect whether a pest is present. In 2019, 24,133 trap inspections were conducted on a total of 2,608 traps in service throughout the county.

Pest Detection Trapping			
TARGET PEST	HOSTS	# OF TRAPS	# OF TRAP SERVICINGS
ASIAN CITRUS PSYLLID ( <i>Diaphorina citri</i> )	Ornamental & nursery plants	297	1,801
EUROPEAN GRAPEVINE MOTH ( <i>Lobesia botrana</i> )	Vineyards	464	4,598
GLASSY-WINGED SHARPSHOOTER ( <i>Homalodisca vitripennis</i> )	Nursery & urban landscape plants	732	6,796
GYPSY MOTH ( <i>Lymantria dispar</i> )	Shade trees	240	1,531
JAPANESE BEETLE ( <i>Popillia japonica</i> )	Turf & roses	207	1,218
LIGHT BROWN APPLE MOTH ( <i>Epiphyas postvittana</i> )	Nursery & urban ornamental plants	175	1,176
MEDITERRANEAN FRUIT FLY ( <i>Ceratitis capitata</i> )	Fruit trees	231	2,856
MELON FLY ( <i>Bactrocera cucurbitae</i> )	Vegetable gardens	88	1,048
ORIENTAL FRUIT FLY ( <i>Bactrocera dorsalis</i> )	Fruit trees	86	1,044
OTHER FRUIT FLIES	Fruit trees & vegetables	88	2,065

The **Phytosanitary Certification Program** ensures that plants and plant commodities shipped to other states or foreign countries are free from injurious pests. Solano County personnel performed 930 Phytosanitary Field Inspections on 7,195 acres of seed crops.

# Solano County Export Market



In 2019, the Solano County Agricultural Department issued 838 Federal Phytosanitary Certificates for commodities bound for export markets in 41 countries.

Argentina  
 Australia  
 Austria  
 Barbados  
 Belgium  
 Brazil  
 Bulgaria  
 Canada  
 Chile  
 China  
 Colombia  
 Dominican Republic  
 Ethiopia  
 Fiji

France  
 French Southern Territories  
 Germany  
 Ghana  
 India  
**Indonesia**  
 Italy  
**Japan**  
**Korea, Republic of**  
 Malaysia  
**Mexico**  
 Netherlands  
 Nigeria

Norway  
 Panama  
 Philippines  
 Poland  
 Saudi Arabia  
 Singapore  
 Spain  
 Switzerland  
 Taiwan  
 Thailand  
 Turkey  
 United Arab Emirates  
 United Kingdom  
 Viet Nam

# Organic Farming

Solano County had 40 registered organic farms in 2019, which produced a variety of herbs, fruits, vegetables, nuts, cut flowers, olive oil, grains, eggs, and livestock. The gross organic production sales in 2019 for Solano County were \$22,798,000. This total accounts for a 30% increase from last year's totals.



# **Solano County Certified Farmers' Markets**

Certified Farmers' Markets allow producers of agricultural commodities to sell directly to the public. Anyone who wishes to sell at a certified farmers' market must obtain a Certified Producers Certificate from the Agricultural Commissioner in the county where the commodity was grown. Certificates were issued to 39 producers and seven Farmers' Markets in 2019 by the Agricultural Commissioner's Office to market local and regional produce in Solano County. The list below contains all of the Certified Farmers' Markets in Solano County along with their 2020 scheduled market times. Please note that some markets have adjusted their times of operations due to the ongoing COVID-19 pandemic.

## **Benicia Certified Farmers' Market**

Time: Thursdays from 4pm-8pm

Months of Operation: April through October

Location: First Street between B & D Streets, Benicia, CA 94510

## **Fairfield Certified Farmers' Market**

Time: Thursdays from 3pm-7pm

Months of Operation: April through October

Location: Solano County Lawn, Texas and Jefferson Streets, Fairfield, CA 94533

## **Gold Country Certified Farmers' Market**

Time: Tuesdays from 10am-2pm

Months of Operation: March through December

Location: 1 Quality Drive (Kaiser Vacaville), Vacaville, CA 95688

## **Vacaville Certified Farmers' Market**

Time: Saturdays from 8am-12pm

Months of Operation: April through October

Location: Creek Walk Plaza at Andrews Park, Vacaville, CA 95688

## **Vallejo Certified Farmers' Market**

Time: Saturdays from 8:30am-2:00pm

Months of Operation: Year Round

Location: 400 Georgia Street (at Georgia and Marin Streets), Vallejo, CA 94589

## **Rio Vista Certified Farmers' Market**

Time: Saturdays from 9am-1pm

Months of Operation: May through October \*\*\*NOT CURRENTLY IN OPERATION\*\*\*

Location: Main and 2<sup>nd</sup> Streets, Rio Vista, CA 94571

## **Kaiser Vallejo Certified Farmers' Market**

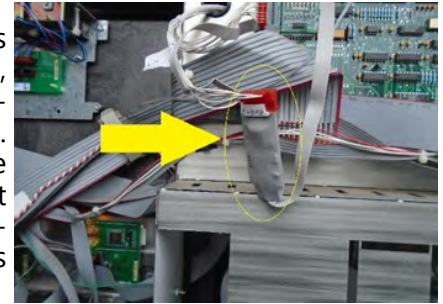
Time: Fridays from 10am-2pm

Months of Operation: Year Round \*\*\* NOT CURRENTLY IN OPERATION\*\*\*

Location: 975 Sereno Drive (Kaiser Vallejo), Vallejo, CA 94589

# WEIGHTS & MEASURES DIVISION Since 1850

The Agriculture Department's Division of Weights and Measures ensures consumer protection through inspection of commercial scales and meters, verification of commodity pricing and quantity of packaged goods, and enforcement of uniform petroleum advertising and fuel quality standards. Gasoline stations are extremely important to our economy and making sure fuels are dispensed in accurate quantities is one of the Division's highest priorities. Weights and Measures Inspectors conduct more than 4,000 labeling, pricing and meter accuracy inspections at Solano County gas stations every year.



*Payment card skimmer concealed in gray shrink tape*

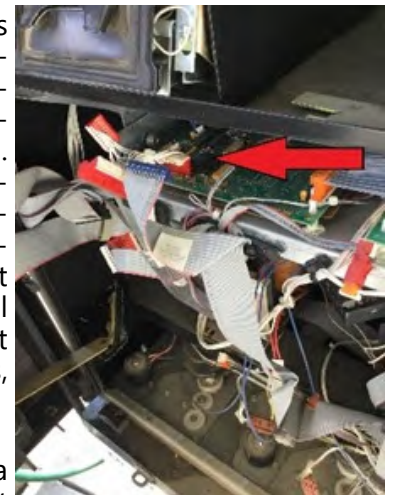
With the advent of pay-at-the-pump transactions, card reader skimmers have become a growing consumer protection problem at gas stations. Criminals install debit/credit card skimmers inside gasoline dispensers to steal customer information and commit fraud. More than 300 skimmers were found in California in 2019. While skimmer fraud may not happen frequently in Solano County, skimmers are occasionally found in our local gas stations. Acting on a consumer tip in November 2019, Weights and Measures Inspectors found a skimmer inside a gasoline dispenser in the Dixon area (see photos below). The skimmer was of a newer type, constructed with cell phone capabilities allowing captured customer information to be directly sent off-site. Inspectors removed the skimmer, turned it over to law enforcement and contacted special investigators from the California Division of Measurement Standards.



*Skimmer removed*

Solano County Weights and Measures Inspectors actively search for skimmers during routine gasoline station dispenser testing and inspections. Recent legislation requires servicing companies to notify local law enforcement when they find skimmers. Dispenser manufacturers are also installing anti-theft alarms, lock-outs and other device enhancements that shut down dispensers if they are tampered with. As a reminder, it is recommended that customers use credit cards, station branded fuel cards or cash when purchasing fuel. These payment cards may carry some fraud protection provisions, whereas many ATM debit cards do not.

To view an interactive map of locations in California where card skimmers have been found visit [cdfa.ca.gov/dms](http://cdfa.ca.gov/dms).



*Card skimmer installed inside gas pump*

Measuring Devices			Weighing Devices		
	Inspected	Compliance percentage		Inspected	Compliance percentage
Retail Motor Fuel Meters	4,238	95%	Computing, Counter Scales	999	95%
Submeter - Electric, Vapor, and Water	730	81%	Cranes, Hanging Scales, Hopper	10	100%
Retail Water Meters	68	95%	Dormant/Portable Platform Scales	113	91%
LPG Meters	52	92%	Vehicle Scales	63	94%
Fabric, Cordage, Wire	42	88%	Livestock and Animal Scales	29	79%
Taxi Meters, Odometers	124	93%	Railway	2	50%
CNG Meters	2	100%	Monorail	4	100%
Misc. Measuring Devices	19	100%	Misc. Weighing Devices	5	100%
<b>Total Measuring Devices Inspected</b>	<b>5,275</b>		<b>Total Weighing Devices Inspected</b>	<b>1,225</b>	
<b>Average Percent in Compliance</b>	<b>93%</b>		<b>Average Percent in Compliance</b>	<b>95%</b>	

**Board of Supervisors**

- Erin Hannigan, Chairwoman, District 1
- Monica Brown, District 2
- Jim Spering, District 3
- John Vasquez, District 4
- Skip Thomson, District 5

**County Administrative Officer**

Birgitta E. Corsello

**Agricultural Commissioner**

**Sealer of Weights and Measures**

- Ed King—Current
- Jose Arriaga—Interim
- Simone Hardy—Former

**Assistant Agricultural Commissioner**

**Sealer of Weights and Measures**

Priscilla Yeaney

**Deputy Agricultural Commissioner**

**Sealer of Weights and Measures**

- Jose Antonio Aviña
- Doug Echelberger
- Linda Pinfold

**Senior Agricultural Biologist**

**Weights and Measures Inspector**

- Matthew Carl
- Manny Devera
- Andrina Quan
- Laura Tripp
- Cody Zacharia

**Agricultural Biologist**

**Weights and Measures Inspector**

- Cathy Blazy
- Chandler Jarreau-Legarda
- Addison Meinke
- Alexander Nguyen
- Matthew Perryman
- Christopher Sakakihara
- Adam Thomas

**Agricultural Biologist**

**Weights and Measures Inspector Trainee**

- Alexandra Argueta
- Brad Cook
- Sylvia Mendoza-Villalovos
- Alexa Schieferecke

**Accountant**

Dan Peterson

**Office Assistant**

- Sharon Garrett
- Letitia Perkins
- Ashton Sturr



# GENERAL INFORMATION

## POPULATION<sup>1</sup>

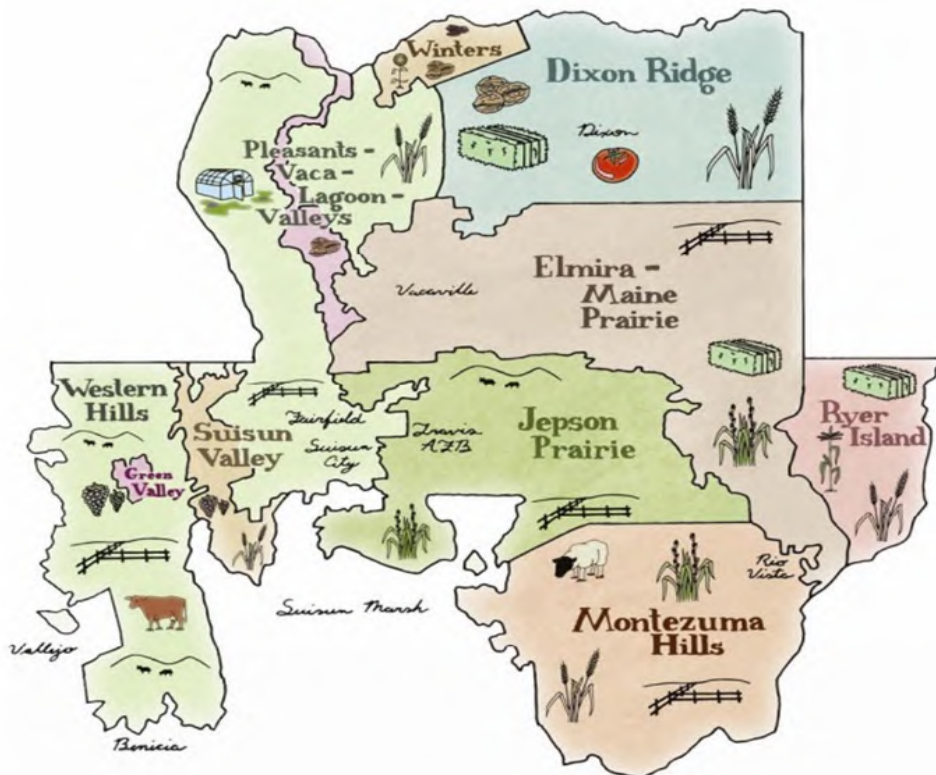
**Solano County Population: 441,307**

<b>Benicia</b>	<b>Dixon</b>	<b>Fairfield</b>	<b>Rio Vista</b>
27,570	19,794	117,149	9,416
<b>Suisun City</b>	<b>Vacaville</b>	<b>Vallejo</b>	<b>Unincorporated</b>
29,447	98,807	119,544	19,580

## AREA

Land Area (Square Miles) <sup>2</sup>	910	Urban and Built Up Land Area (Acres) <sup>2</sup>	60,826
Land Area (Acres) <sup>2</sup>	582,370	Land Area in Farms (Acres) <sup>3</sup>	342,593
Water Area (Square Miles) <sup>2</sup>	87	Total Cropland (Acres) <sup>3</sup>	152,139
Water Area (Acres) <sup>2</sup>	55,590	Irrigated Cropland (Acres) <sup>3</sup>	115,902

## FARMING REGIONS



## STATE RANKING<sup>3</sup>

**County Ranked 26th in Gross Value of Agricultural Production (2018)**

## FARMS

Average US Size (Acres) <sup>4</sup>	443	Number of Farms in United States <sup>4</sup>	2,029,200
Average California Size (Acres) <sup>4</sup>	350	Number of Farms in California <sup>3</sup>	69,400
Average Solano County Size (Acres) <sup>4</sup>	404	Number of Farms in Solano County <sup>3</sup>	849

<sup>1</sup>Source: California Department of Finance, E-1: City/County Population Estimates as of January 1, 2018

<sup>2</sup>Source: California Department of Conservation 2014-2016 Land Use Conversion

<sup>3</sup>Source: CDFA California Agricultural Statistics Review 2018

<sup>4</sup>Source: USDA National Agricultural Statistics Service 2017 Census of Agriculture



**Solano County**  
Department of Agriculture  
Weights and Measures

---

2543 Cordelia Road  
Fairfield, California 94534  
(707) 784-1310  
[www.SolanoCounty.com/Ag](http://www.SolanoCounty.com/Ag)