



*2008 Solano County
Crop and Livestock Report*



Featured Solano County Agricultural Region:

The Suisun Valley

The Suisun Valley agricultural region covers 11,000 acres in western Solano County, north of the city of Fairfield. The rich alluvial soils blanketing the valley floor and a favorable climate make it capable of producing an array of agricultural products. Suisun Valley's crops contribute almost \$17 million to the agricultural output of Solano County each year.

Wine grapes are the principle agricultural commodity produced in the Suisun Valley. Wine grapes have been grown here since the late 1800's when it was home to the largest winery of its time, the Mangels' Winery. Prohibition, variable grape values, and competing crops have caused acreage to fluctuate over the years but wine grapes are emerging once again as an attractive crop for farmers. Several factors are responsible for this revitalization. Foremost is the increase in demand for wine grapes and a corresponding increase in prices. Another factor is local efforts in the wine grape growing community to capitalize on the differentiation offered through the presence of the Suisun Valley American Viticulture Area (AVA) and its similar grape growing conditions to Napa County. Strides have been made in grape quality and AVA promotion that hold promise for increasing the demand for Suisun Valley grapes.

The Suisun Valley has a rich history of producing fruit, with peaches, pears, prunes, and apricots once dominating the landscape. In the early part of the 20th century until the 1940's, Suisun Valley fruits were shipped around the world and fueled a thriving orchard industry. Unfortunately for the fruit growers, global competition and the subsequent closing of key packing facilities brought about a sharp decline in orchard production in the Suisun Valley. Heritage orchards still exist today and fill the baskets at local farm stands and farmers markets.

Recent developments in county planning policies promise to preserve the agricultural foundation of the Suisun Valley while allowing its farmers more flexibility in exploring other activities such as agri-tourism and value-added agriculture. There are five wineries and six farm stands already located in the Suisun Valley, and its rural charm and proximity to major urban areas create the potential for it to grow as a destination for those seeking to purchase high quality products straight from the farmer.

Staff cover photos: Suisun Valley

Jim Allan
Agricultural Commissioner
Sealer of Weights and Measures



Simone Hardy
Assistant Agricultural Commissioner
Sealer of Weights and Measures

DEPARTMENT OF AGRICULTURE
Agricultural Commissioner/Weights and Measures
501 Texas Street Fairfield, CA 94533
Phone (707) 784-1310 Fax (707) 784-1330

To: A.G. Kawamura, Secretary
California Department of Food and Agriculture

and

The Honorable Board of Supervisors
County of Solano, California

Pursuant to the provisions of Sections 2279 and 2272 of the California Food and Agricultural Code, I am pleased to present the Solano County Crop and Livestock Report for 2008. Also included is the 2008 Sustainable Agriculture Report.

The gross value of Solano County's agricultural production for 2008 was \$292,840,200, which represents an increase of \$24,585,000 over 2007 values and a new all time high for Solano County. This represents a 9.16% increase from the 2007 production estimates. Value increases were seen in nearly all field crops because of favorable commodity pricing; this despite many grain yields being reduced due to drought. The nursery industry was hit hard by the economy with fewer housing starts lowering demand for ornamental plants. Processing tomatoes rose in value by nearly six million dollars. Walnuts declined despite increased productivity due to lower prices. It must be emphasized that this report does not reflect the total contribution agriculture makes to the economy of Solano County. A multiplier effect stemming from transportation, processing, marketing and other farm-related services re-spends agricultural dollars to the benefit of the local economy.

Solano County farmers and ranchers produced over 80 different crops and commodities in 2008. Twenty-two of those crops exceeded \$1,000,000 in value. Nursery products remained in the number one ranking with a value of \$43,056,300, followed by alfalfa at \$42,889,600 and tomatoes at \$29,850,600. Cattle and calves, walnuts, milk, wine grapes, irrigated wheat, certified sunflower seed, and field corn finished in the top ten crops for 2008.

I would like to express my sincere appreciation to all of the farmers, ranchers, boards, commissions, and agencies who contributed vital data without which this report would not be possible. Special recognition is given to Shirley Tavare, and Suki LaForga of my staff for their dedication to compiling and producing the 2008 Solano County Crop and Livestock Report.

For additional copies of this report, our 2008 summary crop report, or to learn more about the services provided and programs of the Solano County Department of Agriculture and Weights and Measures, visit our website at www.solanocounty.com/ag.

Respectfully submitted,

Jim Allan
Agricultural Commissioner/Sealer of Weights and Measures

SOLANO COUNTY BOARD OF SUPERVISORS

Barbara Kondylis, District 1, Vice Chair
Linda Seifert, District 2
Jim Spering, District 3
John Vasquez, Chair, District 4
Mike Reagan District 5

COUNTY ADMINISTRATIVE OFFICER

Michael D. Johnson

AGRICULTURE DEPARTMENT STAFF

**AGRICULTURAL COMMISSIONER/
SEALER OF WEIGHTS AND MEASURES**

Jim Allan

**ASSISTANT AGRICULTURAL COMMISSIONER/
SEALER OF WEIGHTS AND MEASURES**

Simone Hardy

**DEPUTY AGRICULTURAL COMMISSIONER/
SEALER OF WEIGHTS AND MEASURES**

Janet Jessen
Linda Pinfold
Dave Singh

F.A.R.M. COORDINATOR

Adam Cline

**SENIOR AGRICULTURAL BIOLOGIST/
WEIGHTS AND MEASURES INSPECTORS**

Manny DeVera
Ivan Godwyn
Johnnie Johnson
Steve Paris
Dave Schroeder
Shirley Tavare

SENIOR AGRICULTURAL BIOLOGIST

Laura Tripp

**AGRICULTURAL BIOLOGIST/
WEIGHTS AND MEASURES INSPECTORS**

Oliver Hardwick

**AGRICULTURAL BIOLOGIST/
WEIGHTS AND MEASURES INSPECTOR TRAINEES**

Alexandrina Carlsen
Mark Daniels, Jr.
Thea Nothaft

OFFICE SUPERVISOR

Ann McKay

OFFICE ASSISTANT II's

Sandra Culbertson
Suki LaForga
Cynthia Smith/Marie Renaud

GENERAL INFORMATION

SOLANO COUNTY POPULATION = 426,729 (January 1, 2009 CA Department of Finance)

Benicia 27,977	Dixon 17,573	Fairfield 108,440	Rio Vista 8,222
Suisun 28,856	Vacaville 96,450	Vallejo 121,055	Unincorporated 20,156

SOLANO COUNTY STATE RANKING

By Gross Value of Agricultural Production = 27th (2007)
For Leading Commodities - Gross Values of Production 2007:

2nd Hay, Sudan
4th Sheep & Lambs

AREA		FARM SIZE	
California Total Land Area 2007 (Acres)	99,689,515	Average US Size (Acres 2008)	418
California Agricultural Land 2007 (Acres)	25,400,000	Average California Size (Acres 2008)	312
County (Square Miles - Land 2006)	829.20	Average Solano County (Acres 2007)	403
County (Acres - Land 2006)	532,623		
County (Acres - Urban & Built-up Land 2006)	58,628	NUMBER OF FULL-TIME FARMS IN SOLANO COUNTY	
County (Square Miles - Water 2006)	77.70	(Year 2007) 470	
County (Acres - Water 2006)	49,749	TOTAL SECURED ASSESSED PROPERTY VALUE	
		(2008/2009) \$45,626,911,762	

SOLANO COUNTY FARMING REGIONS

Dixon Ridge
Elmira/Maine Prairie
Green Valley

Jepson Prairie
Montezuma Hills
Pleasants/Vaca/Lagoon Valleys
Ryer Island

Suisun Valley
Western Hills
Winters

SOLANO COUNTY TRANSPORTATION

Total Road Miles = 587 (Unincorporated Area)
Paved Road Miles 470
Gravel Road Miles 117

BRIDGES
92

MAJOR ROADWAYS
Interstates 80, 505, 680, 780
Hwys 12, 29, 37, 84, 113, 220

RAILROADS
Amtrak, Union Pacific,
California Northern Railroad

SOLANO COUNTY FACILITIES

Travis Air Force Base, University of California at Davis, Nut Tree Airport,
California Maritime Academy

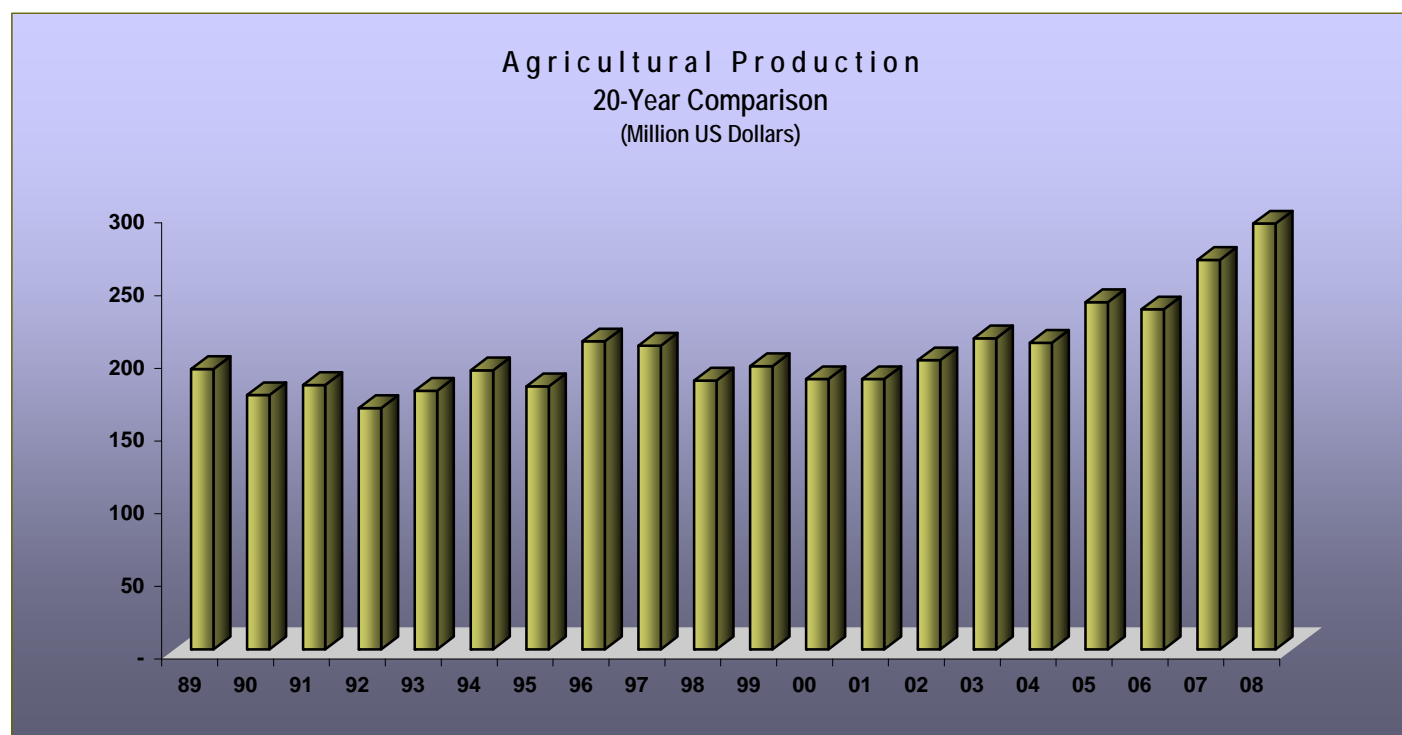
GRAND TOTAL OF ALL AGRICULTURAL PRODUCTS (US DOLLARS)

2008 **\$292,840,200**
2007 **\$268,255,200**

VALUE SUMMARY

YEAR	FIELD CROPS	NURSERY	FRUIT & NUT CROPS	SEED CROPS	VEGETABLE CROPS	ANIMAL PRODUCTION	YEAR TOTALS
1999	55,959,800	28,978,000	29,578,400	7,987,200	44,285,400	28,693,700	195,482,500
2000	47,493,400	35,044,700	29,801,800	5,075,100	33,893,900	34,265,500	185,574,400
2001	48,209,300	37,668,100	26,634,100	4,897,700	33,079,600	35,181,700	185,670,500
2002	47,901,800	38,781,200	25,974,800	5,739,700	37,155,000	43,933,000	199,485,500
2003	43,945,500	42,373,400	26,518,000	5,326,600	35,663,700	60,295,600	214,122,800
2004	50,423,200	43,645,000	*29,285,900	7,114,600	36,903,400	45,207,100	*211,229,900
2005	52,812,700	50,018,000	37,918,500	10,533,500	36,505,000	50,901,900	238,689,600
2006	46,945,500	47,856,000	39,964,300	9,987,600	40,899,400	47,852,200	233,505,000
2007	54,811,900	56,610,700	43,430,000	10,820,900	47,762,100	54,819,600	268,255,200
2008	89,365,400	43,056,300	44,036,600	10,827,900	55,623,500	49,930,500	292,840,200

*Revised 2004 Figure



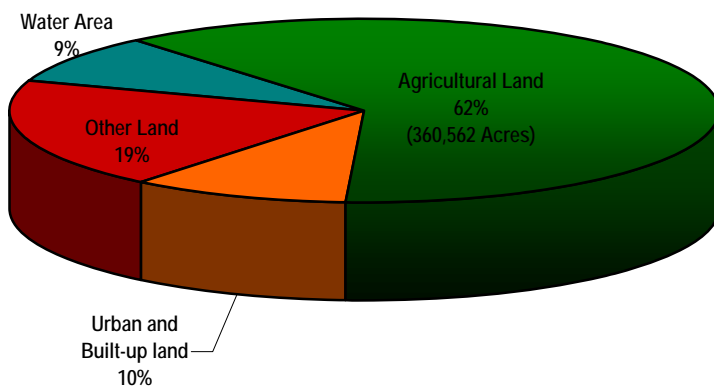
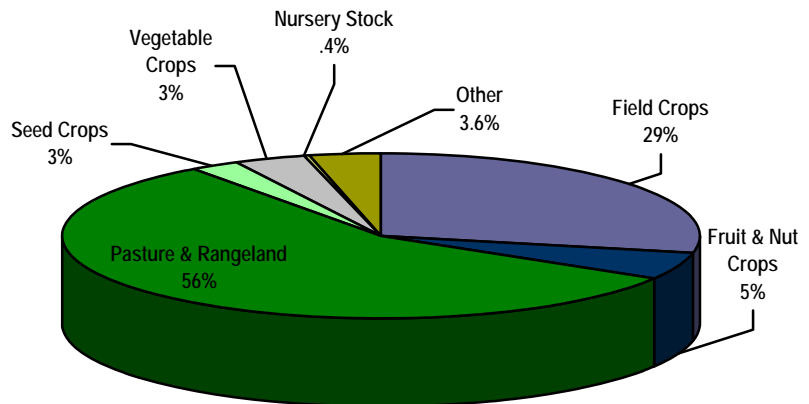
**MILLION DOLLAR CROPS
(US DOLLARS)**

		RANKING	
		2008	2007
NURSERY PRODUCTS	\$43,056,300.00	1	1
ALFALFA	42,889,900.00	2	2
TOMATOES, PROCESSING	29,850,600.00	3	3
CATTLE & CALVES	23,321,100.00	4	4
WALNUTS	19,948,100.00	5	5
MILK, MARKET	16,437,000.00	6	6
GRAPES, WINE	11,064,700.00	7	7
WHEAT, IRRIGATED	8,335,200.00	8	11
SUNFLOWER SEED, CERTIFIED	8,244,200.00	9	12
CORN, FIELD	8,081,600.00	10	9
SHEEP & LAMBS	6,781,100.00	11	10
SUDANGRASS	5,377,300.00	12	13
ALMONDS	5,175,700.00	13	8
RYEGRASS	4,689,300.00	14	16
PRUNES (DRIED PLUMS)	4,275,000.00	15	17
PASTURE, RANGELAND	3,374,200.00	16	15
WHEAT, DRYLAND	3,066,100.00	17	20
PASTURE, IRRIGATED	2,700,300.00	18	18
BEANS, EDIBLE DRY	2,219,400.00	19	-
HAY, GRAIN	2,078,100.00	20	-
SAFFLOWER, OIL	2,003,900.00	21	21
SUNFLOWER SEED, NON-CERTIFIED	1,044,000.00	22	22
BEANS, DRY SEED		-	19
BELL PEPPERS		-	14

DISTRIBUTION OF FARM ACREAGE

	2008	2007
FIELD CROPS	102,644	95,030
FRUIT & NUT CROPS ¹	19,007	18,656
PASTURE & RANGELAND	202,826	202,826
SEED CROPS	9,298	11,474
VEGETABLE CROPS	12,404	12,054
NURSERY PRODUCTS	1,421	1,530
OTHER ²	12,962	18,992
TOTALS	360,562	360,562

Land Use Categories Department of Conservation 2004-2006 Land Use Conversion Report



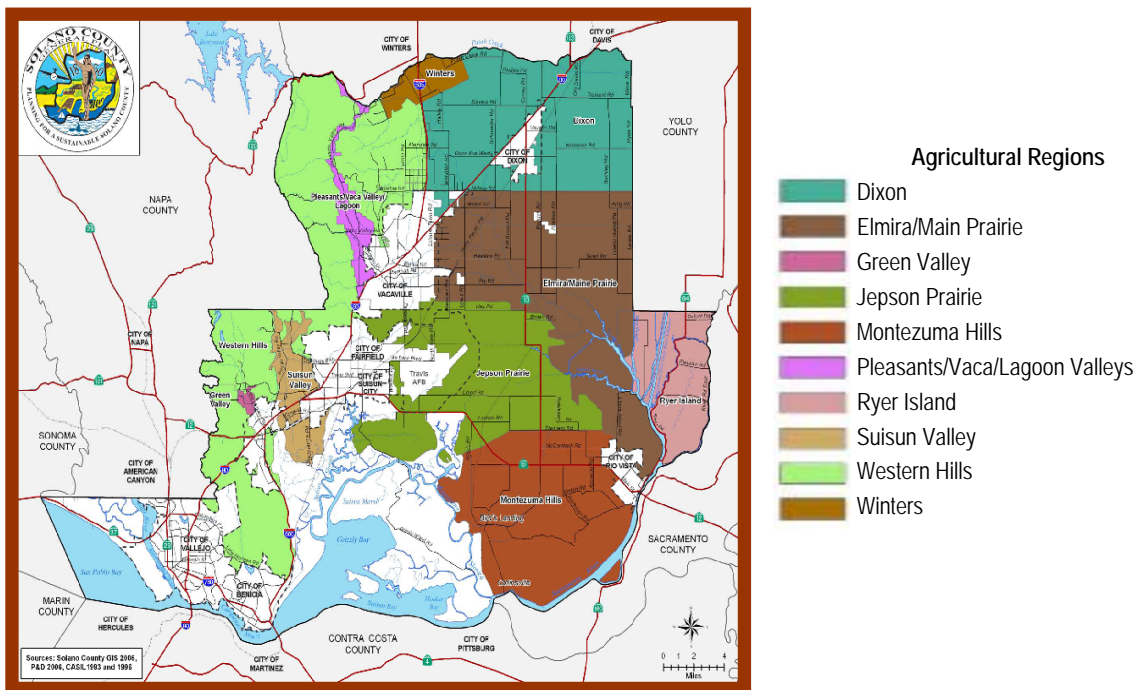
¹Includes non-bearing acreage

²Includes fallow, non-bearing, not harvested, production acreage not reported, etc.

ACREAGE 2008 Fruit and Nut Crops

	Bearing Acreage	Non-Bearing Acreage	Total Acreage
ALMONDS	2,860	506	3,366
APPLES	147	0	147
APRICOTS	52	1	53
BLACKBERRY	3	0	3
CHERRIES	73	5	78
CITRUS ¹	24	0	24
FIGS	2	0	2
GRAPES (Table)	6	0	6
GRAPES (Wine)	4,002	447	4,449
KIWI	25	0	25
NECTARINES	10	1	11
OLIVES	89	11	100
PEACHES (Freestone)	133	11	144
PEARS (Bartlett)	326	49	375
PEARS (Others)	76	4	80
PLUOTS	3	1	4
PERSIMMONS	13	0	13
PISTACHIOS	14	0	14
PLUMS	20	1	21
PRUNES	1,191	4	1,195
WALNUTS (Black)	25	0	25
WALNUTS (English)	7,961	911	8,872
TOTALS	17,055	1,952	19,007

¹Includes grapefruit, kumquat, lemon, lime, mandarin, orange, tangerine



ACREAGE, PRODUCTION & VALUE

Fruit and Nut Crops

CROP	YEAR	BEARING ACRES	PER ACRE	TOTAL	UNIT	PER UNIT	TOTAL VALUE	
ALMONDS Meats	2008	2,860	0.77	2,202.00	Ton	2,351	5,175,700	
	2007	2,263	0.93	2,097.09	Ton	3,307	6,935,100	
APRICOTS ¹	2008	52	0.35	18.00	Ton	3,182	57,200	
CHERRIES Fresh Market	2008	73	1.90	138.57	Ton	1,913	265,100	
	2007	90	2.67	240.30	Ton	3,809	915,300	
GRAPES, WINE ^{2,3}	Dark Varieties	2008	-	-	5,275.90	Ton	942	5,390,800
		2007	-	-	5,345.70	Ton	801	4,281,900
	White Varieties	2008	-	-	8,411.10	Ton	675	5,673,900
		2007	-	-	6,737.50	Ton	566	3,813,100
	TOTAL	2008	4,002	3.53	14,137.00	Ton	-	11,064,700
		2007	4,021	3.01	12,083.20	Ton	-	8,095,000
OLIVES ^{1,4}	2008	89	1.62	144.00	Ton	-	187,500	
PEACHES ³	2008	133	1.80	239.00	Ton	888	212,300	
	2007	142	3.18	451.94	Ton	1,242	561,300	
PRUNES (Dried Plums)	2008	1,191	2.58	3,072.78	Ton	1,391	4,275,000	
	2007	1,291	1.22	1,569.70	Ton	1,366	2,144,200	
STRAWBERRIES	2008	23	-	-	Flat	17.70	287,000	
	2007	27	-	-	Flat	17.90	223,400	
WALNUTS	2008	7,961	1.85	14,728.00	Ton	1,354	19,948,100	
	2007	7,561	1.48	11,190.28	Ton	1,962	21,955,300	
MISC FRUITS & NUTS ⁵	2008	621	-	-		-	2,564,000	
	2007	930	-	-		-	2,600,400	
TOTAL FRUIT & NUT CROPS	2008	17,005					\$44,036,600	
	2007	16,325					\$43,430,000	

Figures may not add due to rounding

¹Previously reported in misc fruits & nuts

²Price varies by variety

³Includes acreage not harvested or sold

⁴Oil Value

⁵Includes almond hulls, apples, blackberries, citrus, figs, kiwi, nectarines, pears, persimmons, pistachios, plums, table grapes, etc.

ACREAGE, PRODUCTION & VALUE Vegetable Crops

CROP	YEAR	HARVESTED		TOTAL	UNIT	PER UNIT	TOTAL VALUE
		ACRES	PER ACRE				
TOMATOES, PROCESSING	2008	10,000	41.79	417,900	Ton	71.43	29,850,600
	2007	9,700	38.59	374,300	Ton	64.00	23,955,200
BELL PEPPERS ¹	2008	-	-	-	-	-	-
	2007	776	18.97	14,720	Ton	226.00	3,326,700
MISC. VEGETABLES							
PROCESSING ²	2008	1,159	-	-	-	-	4,299,000
FRESH ³	2008	1,245	-	-	-	-	21,473,900
	2007	1,578	-	-	-	-	20,480,200
TOTAL VEGETABLE CROPS	2008	12,404	-	-	-	-	\$55,623,500
	2007	12,054	-	-	-	-	\$47,762,100

¹ Includes in miscellaneous vegetables processing to avoid disclosure

² Includes cabbage, cucumber (pickling), peppers

³ Includes beans, beets, broccoli, cabbage, carrots, cucumbers, endive, garlic, herbs, leafy greens, melons, onions, peas, peppers, potatoes, pumpkins, salad greens, sprouts, squash, sweet corn, tomatillo, tomatoes, etc.

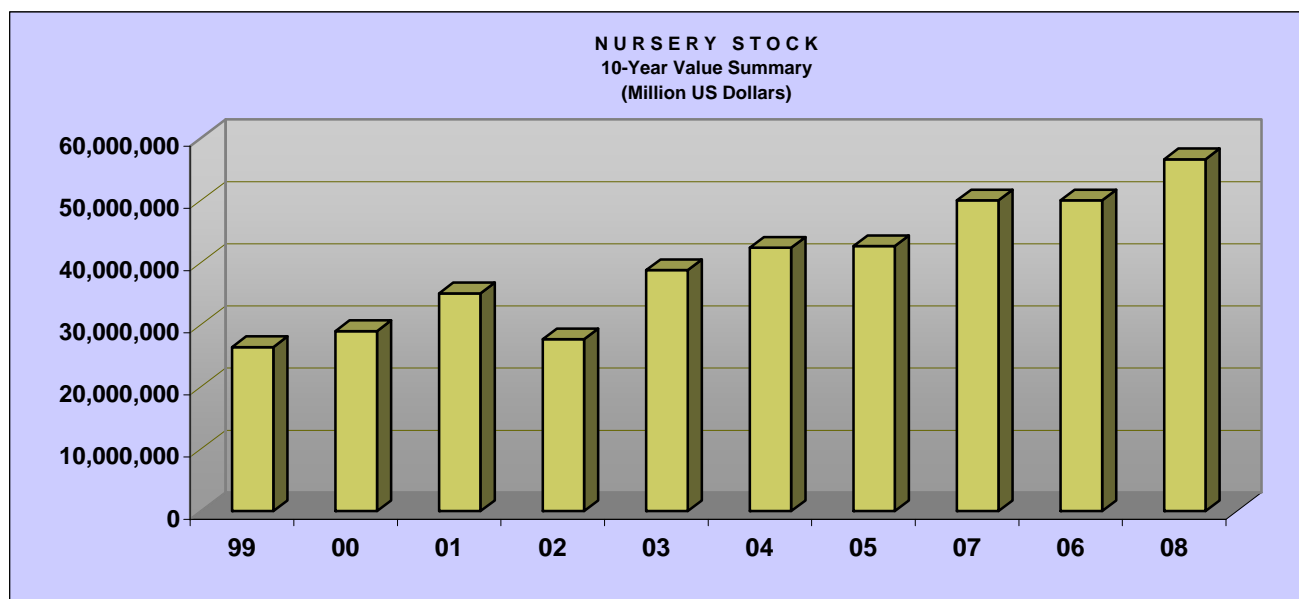


ACREAGE & VALUE Nursery Products

ITEM	YEAR	ACREAGE	TOTAL VALUE
Nursery Stock ¹	2008	1223	37,646,200
	2007	1328	53,387,200
Propagative Stock ²	2008	198	5,410,100
	2007	202	3,223,500
TOTAL NURSERY STOCK	2008	1421	\$43,056,300
	2007	1530	\$56,610,700

¹ Includes bedding plants, Christmas trees, cut flowers, fruit trees, greenhouse transplants, herbaceous perennials, turf, and woody ornamentals

² Includes grapevine cuttings and rootstock



ACREAGE, PRODUCTION & VALUE

Field Crops

CROP	YEAR	HARVESTED			UNIT	PER UNIT	TOTAL	
		ACRES	PER ACRE	TOTAL			VALUE	
BARLEY ¹	2008	-	-	-	-	-	-	
	2007	550	0.95	523	Ton	162.00	84,700	
BEANS, DRY Edible, all classes ²	2008	2,968	0.73	2,166	Ton	1,025	2,219,400	
	2007	-	-	-	-	-	-	
CORN, FIELD	2008	7,504	5.45	40,897	Ton	198.00	8,081,600	
	2007	8,282	5.63	46,628	Ton	145.00	6,761,100	
CORN, SILAGE ¹	2008	-	-	-	-	-	-	
	2007	600	31.5	18,900	Ton	27.00	510,300	
HAY	Alfalfa	2008	30,599	6.95	212,663	Ton	202.00	42,889,900
		2007	29,483	6.39	188,396	Ton	131.00	24,679,900
	Grain	2008	3,995	3.39	13,541	Ton	153.00	2,078,100
		2007	2,200	1.77	3,894	Ton	130.00	506,200
	Grass	2008	2,277	2.47	5,624	Ton	167.00	941,300
		2007	1,150	2.23	2,565	Ton	110.00	282,200
PASTURE, IRRIGATED ³	2008	25,236	-	-	Acre	107.00	2,700,300	
	2007	22,088	-	-	Acre	95.00	2,098,400	
PASTURE, RANGELAND ⁴	2008	177,590	-	-	Acre	19.00	3,374,200	
	2007	180,738	-	-	Acre	18.00	3,253,300	
RYEGRASS	2008	10,183	2.81	28,614	Ton	164.00	4,689,300	
	2007	8,186	2.51	20,547	Ton	116.00	2,383,500	
SAFFLOWER, OIL	2008	3,235	1.28	4,141	Ton	484.00	2,003,900	
	2007	4,200	0.94	3,948	Ton	366.00	1,445,000	
SUDANGRASS	2008	8,370	3.83	32,057	Ton	168.00	5,377,300	
	2007	6,863	3.62	24,844	Ton	146.00	3,627,200	
TRITICALE ¹	2008	-	-	-	-	-	-	
	2007	507	2.91	1,475	Ton	141.00	208,000	
WHEAT	Irrigated	2008	15,549	2.51	39,028	Ton	214.00	8,335,200
		2007	14,068	2.53	35,592	Ton	150.00	5,338,800
	Dryland	2008	10,120	1.43	14,472	Ton	212.00	3,066,100
		2007	12,507	0.85	10,631	Ton	136.00	1,445,800
MISC FIELD CROPS ⁵	2008	7,844	-	-	-	-	3,608,800	
	2007	6,434	-	-	-	-	2,187,500	
TOTAL FIELD CROPS	2008	305,470	-	-	-	-	\$ 89,365,400	
	2007	297,856	-	-	-	-	\$ 54,811,900	

¹ Included in misc to avoid disclosure of individual operations

² Value and yield vary by variety, 2007 included in miscellaneous

³ Acreage data source - 2008 Restricted Material Permit Program

⁴ Calculated using data from Calif Dept of Conservation 2004-2006
Land use conversion report

⁵ Includes barley (dry), corn silage, grass hay silage, sorghum
grain, wheat straw, and triticale grain

PRODUCTION & VALUE Livestock & Poultry

ITEM	YEAR	NUMBER OF HEAD	TOTAL LIVEWEIGHT	UNIT	UNIT VALUE	TOTAL VALUE
CATTLE & CALVES ¹	2008	31,431	290,197	Cwt	80.36	23,321,100
	2007	35,640	263,749	Cwt	88.24	23,273,200
SHEEP & LAMBS ²	2008	31,946	63,719	Cwt	106.42	6,781,100
	2007	46,731	64,073	Cwt	101.28	6,489,300
MISCELLANEOUS ³	2008	-	-	-	-	1,859,100
	2007	-	-	-	-	6,662,800
TOTAL LIVESTOCK & POULTRY	2008					\$31,961,300
	2007					\$36,425,300

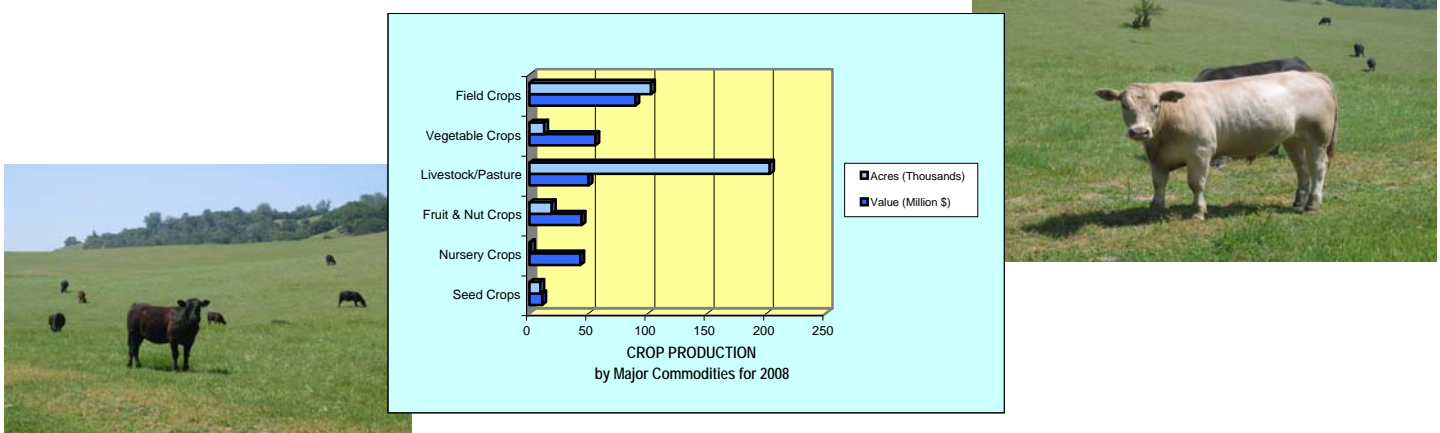
¹Includes beef stocker gain, dairy calves, dairy yearlings, dairy replacement heifers and dairy cull cows

²Includes feeder lamb gain

³Includes goats and poultry (chickens, broilers and eggs) (2007 also included beef stocker gain, feeder lamb gain, dairy calves, replacement heifers, and cull cows)

PRODUCTS AND VALUE Livestock, Poultry & Apiary

ITEM	YEAR	PRODUCTION	UNIT	UNIT VALUE	TOTAL VALUE	
BEES	Pollination ¹	2008	17,621	Colony	54.82	966,100
		2007	17,006	Colony	57.77	982,400
	Apiary Products ²	2008	-	-	-	158,600
		2007	-	-	-	110,700
MILK	Market	2008	958,369	Cwt	17.15	16,437,000
		2007	909,792	Cwt	18.71	17,022,200
WOOL	2008	411,658	Lb	0.99	407,500	
	2007	306,612	Lb	0.91	279,000	
TOTAL LIVESTOCK, POULTRY & APIARY	2008				\$17,969,200	
	2007				\$18,394,300	



¹Values based on pollinated acreage and number of colonies used for adequate pollination. Pollination fee varies by crop.

Crops pollinated include almond, apple, cherry, kiwi, prune, sunflower & vine seed

²Apiary products include bee packages, honey, & queens

ACREAGE, PRODUCTION & VALUE

Seed Crops

CROP	YEAR	HARVESTED ACRES	PER ACRE	TOTAL	UNIT	PER UNIT	TOTAL VALUE	
BEANS, DRY ^{1,2}	2008	-	-	-	-	-	-	
	All Market Classes	2007	1,804	1.07	1,930	Ton	843.00	1,627,000
	All Market Classes, Certified	2008	-	-	-	-	-	-
		2007	412	0.51	210	Ton	800.00	168,000
TOTAL BEANS, DRY	2008	-	-	-	-	-	-	
	2007	2,216	-	-	-	-	1,795,000	
CUCUMBER	2008	222	414.00	91,795	Lb	5.82	534,000	
	2007	391	101.30	39,608	Lb	10.66	422,200	
SUNFLOWER	2008	183	0.45	83	Ton	2,140.00	177,800	
	Non Certified	2007	1,029	0.70	720	Ton	1,450.00	1,044,000
	Certified	2008	7,352	0.52	3,853	Ton	2,140.00	8,244,200
		2007	5,041	0.70	3,529	Ton	1,450.00	5,117,000
TOTAL SUNFLOWERS	2008	7,535	-	-	-	-	8,422,000	
	2007	6,070	-	-	-	-	6,161,000	
WATERMELON ¹	2008	-	-	-	-	-	-	
	2007	441	305.65	134,792	Lb	3.64	490,600	
WHEAT	Certified	2008	560	2.50	1,400	Ton	200.00	280,000
	2007	1,600	2.75	4,400	Ton	160.00	704,000	
MISC SEED ³	2008	981	-	-	-	-	1,591,900	
	2007	756	-	-	-	-	1,248,100	
TOTAL SEED CROPS	2008	9,298	-	-	-	-	\$10,827,900	
	2007	11,474	-	-	-	-	\$10,820,900	

Some figures may not add due to rounding

¹Included in miscellaneous

²2007 dry bean value and yield vary by variety

³Includes beans (dry), melon, onion, pumpkin, sudangrass, squash, triticale, watermelon



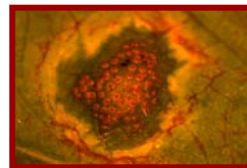
SUSTAINABLE AGRICULTURE REPORT

PEST PREVENTION, EXCLUSION AND DETECTION

QUARANTINE INTERCEPTIONS

PEST - COMMON NAME (SCIENTIFIC NAME)	SHIPMENT CONTENTS	PEST RATING
Cedar-Apple Rust (<i>Gymnosporangium juniperi-virginianae</i>)	Apple Trees	A
Gypsy Moth-Pupal Shell (<i>Lymantria dispar</i>)	Household Goods	A
Moth - pupa (<i>Lymantria sp.</i>)	Household Goods	Q
Nonviable Sharpshooter Egg Mass (<i>Cicadellidae sp.</i>)	Crape Myrtle Trees	Q
Aphid - nymphs (<i>Aphididae sp.</i>)	Cut Flowers	Q
Whitefly - pupa (<i>Trialeurodes sp.</i>)	Cut Flowers	Q

Gypsy Moth
Larva



Cedar-Apple Rust
Pustule

INSPECTION & SURVEY ACTIVITIES

PEST	INSPECTED	NO. OF INSPECTIONS
Glassywinged Sharpshooter (<i>Homalodisca coagulata</i>)	606 Nursery, Urban Traps	10,144 Trap Inspections 54 Properties Surveyed 1,011 Nursery Shipments
Gypsy Moth (<i>Lymantria dispar</i>)	Outdoor Household Goods	35 Shipments
Sudden Oak Death (<i>Phytophthora ramorum</i>)	Nursery, Greenwaste, Wood Products, Soil, etc.	90
Exotic Pests	Incoming Packages, Plant Shipments, Trucks, Seeds, etc.	4,769
Export: International Interstate & Intrastate	Raw Agricultural (plant) Products	1,170 Phytosanitary Certificates 44 State Quarantine & Phytosanitary
Apple Maggot, Gypsy Moth, Japanese Beetle, Melon Fly, Oriental Fruit Fly, Mediterranean Fruit Fly and Light Brown Apple Moth	2,354 Pest Detection Traps	26,182
Seed for Export	8,228 Acres Seed Crops (Phytosanitary Field)	

ORGANIC FARMING STATISTICS

FARMS	ACRES	APPROXIMATE VALUE
31	Approximately 1,405	\$8,098,896
(almonds, apples, apricots, beans, broccoli, carrots, cherries, citrus, corn, cut flowers, eggs, endive, fig, herbs, kiwi, melons, leaf greens, olives, onions, peaches, pears, peppers, persimmons, plums, pistachios, sprouts, squash, tomatoes, walnuts, wine grapes, etc.)		

2008 SOLANO COUNTY INTERNATIONAL TRADING PARTNERS

COMMODITIES EXPORTED

DRIED FRUIT	Apple, Apricot, Banana, Blueberry, Cherry, Cranberry, Mango, Papaya, Peach, Pear, Pineapple, Prunes, Raisin, Strawberry
HAY	Alfalfa, Rye Grass, Timothy Hay, Sudan Hay
NURSERY STOCK	Camelia, Grape-Cuttings, Grape-Dormant Plants, Grape-Dormant Rootstock, Grape-Plants (Vines), Grape-Rootstock,
NUTS	Almond, Walnut
SEED	Cucumber, Melon, Pepper, Pumpkin, Squash, Tomatillo, Tomato, Watermelon
VEGETABLE	Endive-Red, Endive-White

DESTINATION COUNTRIES

<p>Algeria Armenia Australia Austria Belgium Brazil Canada Chile China Colombia Costa Rica Dominican Republic France Germany Guam</p>		<p>Netherlands Norway Peru Republic of Korea Romania Russian Federation Singapore Spain Taiwan Thailand Turkey Ukraine United Arab Emirates United Kingdom Vietnam</p>
---	--	--